



[Go to Product page](#)

Datasheet for ABIN7271551
anti-ZDHHC20 antibody

1 Image

Overview

Quantity:	100 µL
Target:	ZDHHC20
Reactivity:	Human
Host:	Rabbit
Clonality:	Polyclonal
Conjugate:	This ZDHHC20 antibody is un-conjugated
Application:	Western Blotting (WB)

Product Details

Purpose:	ZDHHC20 Rabbit pAb
Immunogen:	Recombinant protein of human ZDHHC20.
Isotype:	IgG
Cross-Reactivity:	Human, Mouse, Rat
Characteristics:	Polyclonal Antibodies
Purification:	Affinity purification

Target Details

Target:	ZDHHC20
Alternative Name:	ZDHHC20 (ZDHHC20 Products)
Background:	Palmitoyltransferase that could catalyze the addition of palmitate onto various protein

Target Details

substrates. Catalyzes palmitoylation of Cys residues in the cytoplasmic C-terminus of EGFR, and modulates the duration of EGFR signaling by modulating palmitoylation-dependent EGFR internalization and degradation. Has a preference for acyl-CoA with C16 fatty acid chains. Can also utilize acyl-CoA with C14 and C18 fatty acid chains.,4933421L13Rik,DHHC-20,DHHC20,ZDHHC20,Cell Biology & Developmental Biology,ZDHHC20

Gene ID: 253832

UniProt: [Q5W0Z9](#)

Application Details

Application Notes: WB,1:500 - 1:2000

Restrictions: For Research Use only

Handling

Format: Liquid

Buffer: PBS with 0.02 % sodium azide,50 % glycerol, pH 7.3.

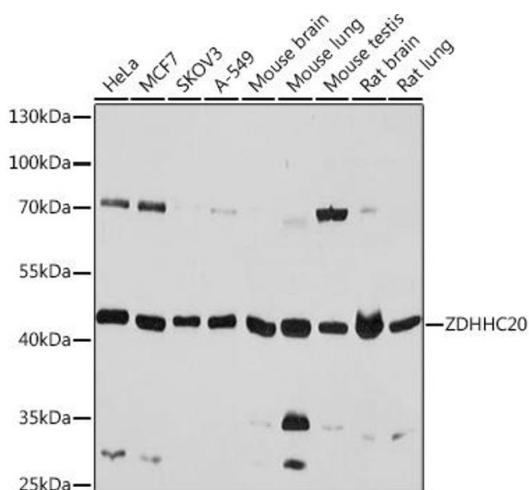
Preservative: Sodium azide

Precaution of Use: This product contains Sodium azide: a POISONOUS AND HAZARDOUS SUBSTANCE which should be handled by trained staff only.

Storage: -20 °C

Storage Comment: Store at -20°C. Avoid freeze / thaw cycles.

Images



Western Blotting

Image 1. Western blot analysis of extracts of various cell lines, using ZDHHC20 antibody (ABIN7271551) at 1:1000 dilution. Secondary antibody: HRP Goat Anti-Rabbit IgG (H+L) (ABIN1684268 and ABIN3020597) at 1:10000 dilution. Lysates/proteins: 25 µg per lane. Blocking buffer: 3 % nonfat dry milk in TBST. Detection: ECL Basic Kit (RM00020). Exposure time: 3s.