



[Go to Product page](#)

Datasheet for ABIN7271557
anti-ZFYVE27 antibody (AA 217-411)

1 Image

Overview

Quantity:	100 µL
Target:	ZFYVE27
Binding Specificity:	AA 217-411
Reactivity:	Human
Host:	Rabbit
Clonality:	Polyclonal
Conjugate:	This ZFYVE27 antibody is un-conjugated
Application:	Western Blotting (WB)

Product Details

Purpose:	ZFYVE27 Rabbit pAb
Immunogen:	Recombinant fusion protein containing a sequence corresponding to amino acids 217-411 of human ZFYVE27 (NP_653189.3).
Sequence:	VEFFRVVSEY RASLQQRMNPKQEEHAFESP PPPDVGGKDG LMDSTPALTP TEDLTPGSVE EAEAEAPDEE FKDAIEETHL VVLEDEGAP CPAEDELALQ DNGFLSKNEV LRSKVSRLTE RLRKRYPTNN FGNCTGCSAT FSVLKKRRSC SNCGNSFCSR CCSFKVPKSS MGATAPEAQR ETVFCASCN QTLISK
Isotype:	IgG
Cross-Reactivity:	Human, Rat
Characteristics:	Polyclonal Antibodies

Product Details

Purification: Affinity purification

Target Details

Target: ZFYVE27

Alternative Name: ZFYVE27 ([ZFYVE27 Products](#))

Background: This gene encodes a protein with several transmembrane domains, a Rab11-binding domain and a lipid-binding FYVE finger domain. The encoded protein appears to promote neurite formation. A mutation in this gene has been reported to be associated with hereditary spastic paraplegia, however the pathogenicity of the mutation, which may simply represent a polymorphism, is unclear. ZFYVE27, PROTRUDIN, SPG33, protrudin, Neuroscience, Neurodegenerative Diseases, ZFYVE27

Molecular Weight: 31kDa/34kDa/35kDa/41kDa/45kDa/46kDa

Gene ID: 118813

UniProt: [Q5T4F4](#)

Pathways: [Neurotrophin Signaling Pathway](#)

Application Details

Application Notes: WB, 1:500 - 1:2000

Restrictions: For Research Use only

Handling

Format: Liquid

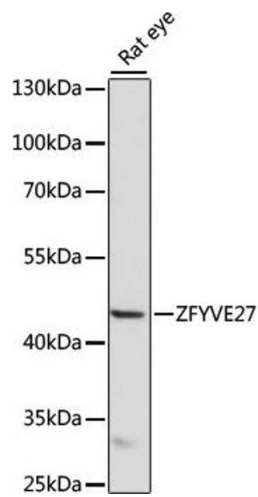
Buffer: PBS with 0.02 % sodium azide, 50 % glycerol, pH 7.3.

Preservative: Sodium azide

Precaution of Use: This product contains Sodium azide: a POISONOUS AND HAZARDOUS SUBSTANCE which should be handled by trained staff only.

Storage: -20 °C

Storage Comment: Store at -20°C. Avoid freeze / thaw cycles.



Western Blotting

Image 1. Western blot analysis of extracts of rat eye, using ZFYVE27 antibody (ABIN7271557) at 1000 dilution. Secondary antibody: HRP Goat Anti-Rabbit IgG (H+L) (ABIN1684268 and ABIN3020597) at 1:10000 dilution. Lysates/proteins: 25 µg per lane. Blocking buffer: 3 % nonfat dry milk in TBST. Detection: ECL Basic Kit (RM00020). Exposure time: 15s.