



[Go to Product page](#)

Datasheet for ABIN7271562  
**anti-ZMIZ2 antibody (AA 1-110)**

1 Image

Overview

Quantity:	100 µL
Target:	ZMIZ2
Binding Specificity:	AA 1-110
Reactivity:	Human
Host:	Rabbit
Clonality:	Polyclonal
Conjugate:	This ZMIZ2 antibody is un-conjugated
Application:	Western Blotting (WB)

Product Details

Purpose:	ZMIZ2 Rabbit pAb
Immunogen:	Recombinant fusion protein containing a sequence corresponding to amino acids 1-110 of human ZMIZ2 (NP_001287888).
Sequence:	MNSMNPMPKPA LPPAPHG DGS FAYESVPWQQ SATQPAGSL S VVTTVWGVGN ATQSQCLGQQ AFAEGGANKG YVQQGVYSRG GYPGAPGFTT GYAGGPGLG LPSHAARPST
Isotype:	IgG
Cross-Reactivity:	Human, Mouse, Rat
Characteristics:	Polyclonal Antibodies
Purification:	Affinity purification

## Target Details

---

Target:	ZMIZ2
Alternative Name:	ZMIZ2 ( <a href="#">ZMIZ2 Products</a> )
Background:	ZMIZ2 and ZMIZ1 (MIM 607159) are members of a PIAS (see MIM 603566)-like family of proteins that interact with nuclear hormone receptors. ZMIZ2 interacts with androgen receptor (AR, MIM 313700) and enhances AR-mediated transcription (Huang et al., 2005 [PubMed 16051670]), ZMIZ2, NET27, TRAFIP20, ZIMP7, hZIMP7, Epigenetics & Nuclear Signaling, Nuclear Receptor Signaling, Nuclear hormone receptors, Chromatin Remodeling, Signal Transduction, ZMIZ2
Gene ID:	83637
UniProt:	<a href="#">Q8NF64</a>

## Application Details

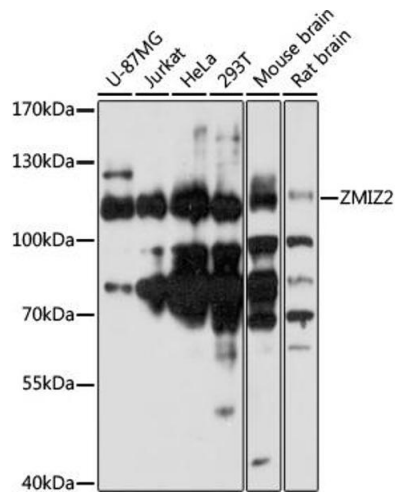
---

Application Notes:	WB, 1:500 - 1:2000
Restrictions:	For Research Use only

## Handling

---

Format:	Liquid
Buffer:	PBS with 0.02 % sodium azide, 50 % glycerol, pH 7.3.
Preservative:	Sodium azide
Precaution of Use:	This product contains Sodium azide: a POISONOUS AND HAZARDOUS SUBSTANCE which should be handled by trained staff only.
Storage:	-20 °C
Storage Comment:	Store at -20°C. Avoid freeze / thaw cycles.



### Western Blotting

**Image 1.** Western blot analysis of extracts of various cell lines, using ZMIZ2 antibody (ABIN7271562) at 1:1000 dilution. Secondary antibody: HRP Goat Anti-Rabbit IgG (H+L) (ABIN1684268 and ABIN3020597) at 1:10000 dilution. Lysates/proteins: 25 µg per lane. Blocking buffer: 3 % nonfat dry milk in TBST. Detection: ECL Basic Kit (RM00020). Exposure time: 90s.