

Datasheet for ABIN727265  
**anti-Ovalbumin antibody**[Go to Product page](#)

1 Image

1 Publication

## Overview

Quantity:	100 µL
Target:	Ovalbumin (OVA)
Reactivity:	Chicken
Host:	Rabbit
Clonality:	Polyclonal
Conjugate:	This Ovalbumin antibody is un-conjugated
Application:	Western Blotting (WB), ELISA

## Product Details

Immunogen:	Ovalbumin [hen egg white]
Isotype:	IgG
Cross-Reactivity:	Chicken
Purification:	Purified by Protein A.

## Target Details

Target:	Ovalbumin (OVA)
Alternative Name:	Ovalbumin ( <a href="#">OVA Products</a> )
Background:	Synonyms: Ovalbumin, Allergen Gal d 2, CAP 2, CAP2, Cytoplasmic antiproteinase 2, Egg albumin, Gal d II, Hen egg white, PI8, Plakalbumin, Protease inhibitor 8, Serpin B8, serpin peptidase inhibitor clade B member 8, SERPINB14, SERPINB8.  Background: Chicken Ovalbumin is the major protein in the "white" of the egg (and a favorite

## Target Details

antigen in immunological research). Egg white contains a variety of proteins including ovalbumin, conalbumin, ovomucoid and lysozyme. It belongs to the serpin family and the Ov serpin subfamily. Ovalbumin can cause an allergic reaction in humans. Ovalbumin has been implicated in the development of the egg shell. Immunohistochemistry revealed that ovalbumin is found only in the mammary bodies of decalcified shell, and is not distributed throughout the shell matrix. These results indicate that ovalbumin is present during the initial phase of shell formation and becomes incorporated into the protein matrix of the mammary bodies. However, it is not yet clear whether ovalbumin at this site plays a specific role in shell mineralisation.

Gene ID: 5271

## Application Details

Application Notes: WB 1:300-5000  
ELISA 1:500-1000  
IHC-P 1:200-400

Restrictions: For Research Use only

## Handling

Format: Liquid

Concentration: 1 µg/µL

Buffer: 0.01M TBS( pH 7.4) with 1 % BSA, 0.02 % Proclin300 and 50 % Glycerol.

Preservative: ProClin

Precaution of Use: This product contains ProClin: a POISONOUS AND HAZARDOUS SUBSTANCE, which should be handled by trained staff only.

Storage: 4 °C,-20 °C

Storage Comment: Shipped at 4°C. Store at -20°C for one year. Avoid repeated freeze/thaw cycles.

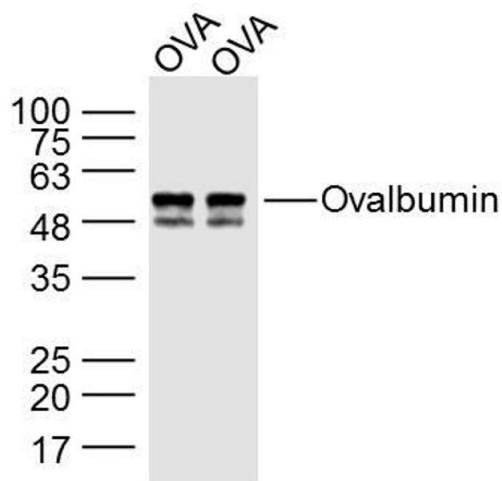
Expiry Date: 12 months

## Publications

Product cited in: Apperson, Vorachek, Dolan, Bobe, Pirelli, Hall: "Effects of feeding pregnant beef cows selenium-enriched alfalfa hay on passive transfer of ovalbumin in their newborn calves." in: **Journal of**

trace elements in medicine and biology : organ of the Society for Minerals and Trace  
Elements (GMS), Vol. 50, pp. 640-645, (2019) ([PubMed](#)).

Images



**Image 1.** Ovalbumin protein lysates probed with Ovalbumin Polyclonal Antibody, Unconjugated at 1:300 dilution and 4°C overnight incubation. Followed by conjugated secondary antibody incubation at 1:10000 for 60 min at 37°C.