

Datasheet for ABIN7272972  
**anti-CHML antibody (C-Term)**[Go to Product page](#)

## 1 Image

## Overview

Quantity:	300 µg
Target:	CHML
Binding Specificity:	C-Term
Reactivity:	Human
Host:	Goat
Clonality:	Polyclonal
Application:	Western Blotting (WB)

## Product Details

Immunogen:	Purified recombinant peptide derived from within residues 617 aa - stop at the C-terminus of human REP2 produced in E. coli.
Isotype:	IgG
Cross-Reactivity (Details):	Human, mouse, rat, bovine, canine, chicken/avian, donkey, feline, goat, guinea pig, hamster, horse, porcine, rabbit, sheep, simian, other
Purification:	Epitope affinity purified

## Target Details

Target:	CHML
Alternative Name:	REP2 ( <a href="#">CHML Products</a> )

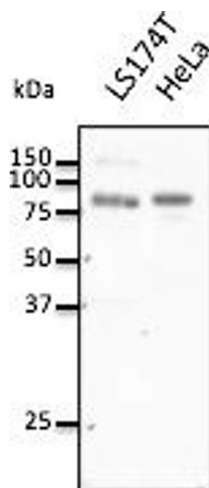
## Application Details

Application Notes:	WB:1:500-1:5,000
Comment:	Detects endogenous REP2 by Western blot. This Ab is specific for REP2, it does not cross-react with REP1.
Restrictions:	For Research Use only

## Handling

Concentration:	3 mg/mL
Buffer:	PBS, 20 % glycerol and 0.05 % sodium azide
Preservative:	Sodium azide
Precaution of Use:	This product contains Sodium azide: a POISONOUS AND HAZARDOUS SUBSTANCE which should be handled by trained staff only.
Storage:	4 °C,-20 °C
Storage Comment:	Store at -20 °C for long-term storage. Store at 2-8 °C for up to one month.

## Images



### Western Blotting

Image 1.