

Datasheet for ABIN7273023  
**anti-GFP antibody**



[Go to Product page](#)

3 Images

## Overview

Quantity:	400 µg
Target:	GFP
Reactivity:	Aequorea victoria
Host:	Goat
Clonality:	Polyclonal
Conjugate:	This GFP antibody is un-conjugated
Application:	Western Blotting (WB), Immunofluorescence (IF), Immunohistochemistry (Frozen Sections) (IHC (fro)), Immunohistochemistry (Paraffin-embedded Sections) (IHC (p))

## Product Details

Immunogen:	Purified recombinant peptide produced in E. coli.
Isotype:	IgG
Cross-Reactivity (Details):	Reacts against GFP
Purification:	Epitope affinity purified

## Target Details

Target:	GFP
Alternative Name:	GFP ( <a href="#">GFP Products</a> )

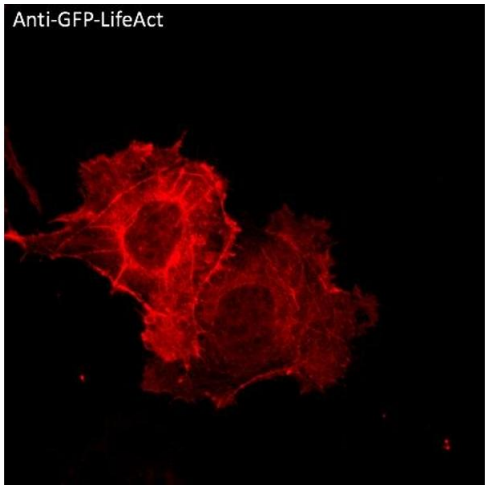
## Application Details

Application Notes:	WB:1:500-1:5,000, IF:1:50-1:1,000, IHC-P:1:50-1:1,000, IHC-F:1:50-1:1,000, IEM:1:50-1:1,000
Comment:	In 293HEK cells transfected with cds plasmid detects a band of 27 kDa by Western blot. This antibody does recognize YFP and CFP and does not recognize RFP and mCherry fluorescent proteins.
Restrictions:	For Research Use only

## Handling

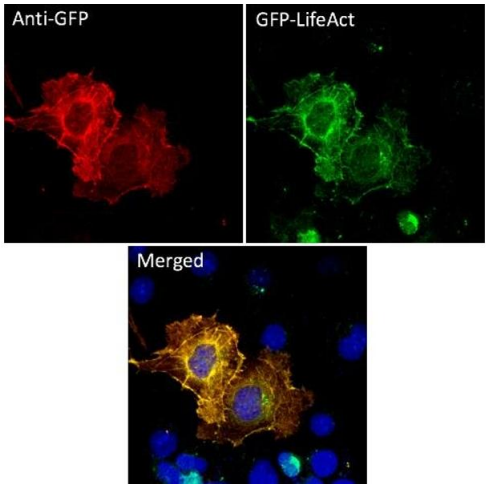
Concentration:	2 mg/mL
Buffer:	NaHCO3 100 mM pH 9, no preservatives
Preservative:	Without preservative
Storage:	4 °C,-20 °C
Storage Comment:	Store at -20 °C for long-term storage. Store at 2-8 °C for up to one month.

## Images



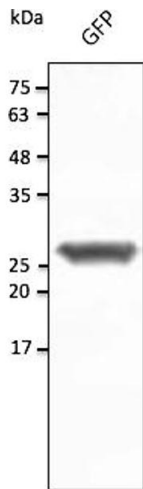
**Immunofluorescence**

**Image 1.**



**Immunofluorescence**

Image 2.



**Western Blotting**

Image 3.