

Datasheet for ABIN7273028

anti-beta Synuclein antibody (C-Term)[Go to Product page](#)**1** Image

Overview

Quantity:	200 µg
Target:	beta Synuclein (SNCB)
Binding Specificity:	C-Term
Reactivity:	Human
Host:	Goat
Clonality:	Polyclonal
Conjugate:	This beta Synuclein antibody is un-conjugated
Application:	Western Blotting (WB)

Product Details

Immunogen:	Recombinant peptide derived from within residues 80 aa to the C-terminus of human SNCB produced in E. coli.
Isotype:	IgG
Cross-Reactivity (Details):	Reacts against human, rat, mouse, canine and monkey proteins
Purification:	Epitope affinity purified

Target Details

Target:	beta Synuclein (SNCB)
Alternative Name:	SNCB (SNCB Products)

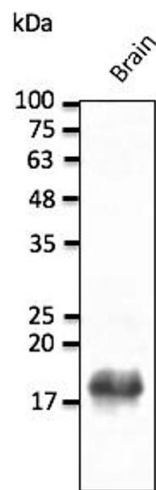
Application Details

Application Notes:	WB:1:500-1:5,000
Comment:	Detects endogenous levels of SNCB by Western blot. This Ab is specific for SNCB and does not recognizes SNCA and SNCG proteins.
Restrictions:	For Research Use only

Handling

Concentration:	2 mg/mL
Buffer:	PBS, 20 % glycerol and 0.05 % sodium azide
Preservative:	Sodium azide
Precaution of Use:	This product contains Sodium azide: a POISONOUS AND HAZARDOUS SUBSTANCE which should be handled by trained staff only.
Storage:	4 °C,-20 °C
Storage Comment:	Store at -20 °C for long-term storage. Store at 2-8 °C for up to one month.

Images



Western Blotting

Image 1.