



Datasheet for ABIN7273052

## Chicken anti-Chicken IgY Antibody (DyLight 488)



[Go to Product page](#)

### 2 Images

#### Overview

Quantity:	500 µg
Target:	IgY
Reactivity:	Chicken
Host:	Chicken
Clonality:	Polyclonal
Conjugate:	DyLight 488
Application:	Immunofluorescence (IF), Western Blotting (WB)

#### Product Details

Immunogen:	Full chicken IgY affinity purified from domestic chicken ( <i>G. gallus</i> ) egg yolk. Purity >95% by SDS-PAGE.
Isotype:	IgY
Cross-Reactivity (Details):	Reacts against chicken.
Purification:	Epitope affinity purified

#### Target Details

Target:	IgY
Abstract:	<a href="#">IgY Products</a>
Target Type:	Antibody

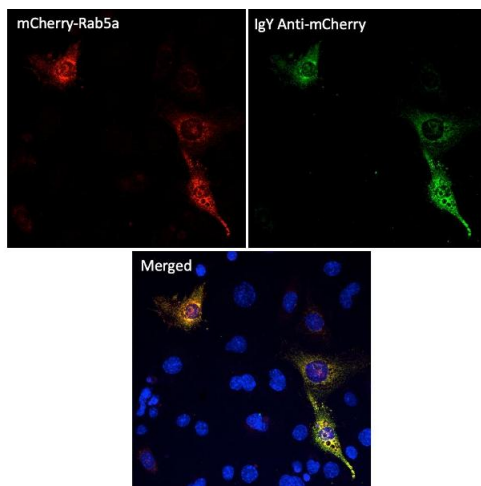
## Application Details

Application Notes:	WB:1:2,000-1:10,000, IF:1:100-1:1,000
Comment:	Using serum samples detects chicken IgY by Western blot. Reduced cross-reactivity to other species.
Restrictions:	For Research Use only

## Handling

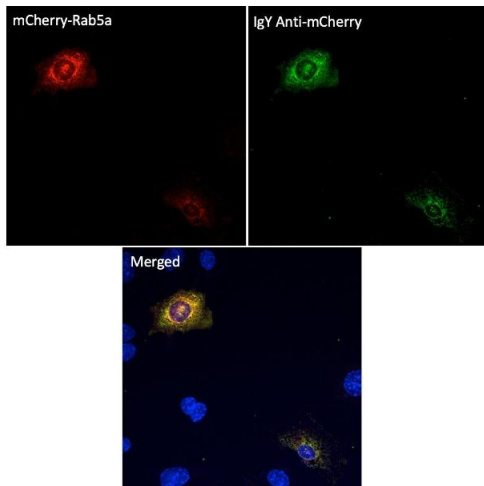
Concentration:	2.5 mg/mL
Buffer:	PBS, 20 % glycerol and 0.05 % sodium azide
Preservative:	Sodium azide
Precaution of Use:	This product contains Sodium azide: a POISONOUS AND HAZARDOUS SUBSTANCE which should be handled by trained staff only.
Storage:	4 °C,-20 °C
Storage Comment:	Store at -20 °C for long-term storage. Store at 2-8 °C for up to one month.

## Images



### Immunofluorescence

Image 1.



## Immunofluorescence

Image 2.