



Datasheet for ABIN7273067
anti-TMEM160 antibody (C-Term)



[Go to Product page](#)

1 Image

Overview

Quantity:	200 µg
Target:	TMEM160
Binding Specificity:	C-Term
Reactivity:	Human
Host:	Goat
Clonality:	Polyclonal
Application:	Western Blotting (WB)

Product Details

Immunogen:	Peptide derived from within residues 160 aa to the C-terminus of human TMEM160 protein.
Isotype:	IgG
Cross-Reactivity (Details):	Reacts against human, rat, mouse, canine and monkey proteins.
Purification:	Epitope affinity purified

Target Details

Target:	TMEM160
Alternative Name:	TMEM160 (TMEM160 Products)

Application Details

Application Notes:	WB:1:500-1:2,000
--------------------	------------------

Application Details

Comment: Detects endogenous levels of TMEM160 in Melan-ink and NIH3T3 by Western blot.

Restrictions: For Research Use only

Handling

Concentration: 2 mg/mL

Buffer: PBS, 20 % glycerol and 0.05 % sodium azide

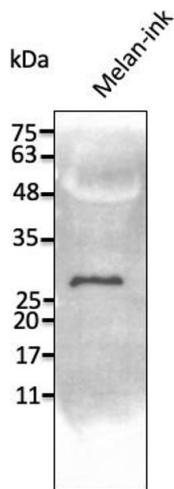
Preservative: Sodium azide

Precaution of Use: This product contains Sodium azide: a POISONOUS AND HAZARDOUS SUBSTANCE which should be handled by trained staff only.

Storage: 4 °C, -20 °C

Storage Comment: Store at -20 °C for long-term storage. Store at 2-8 °C for up to one month.

Images



Western Blotting

Image 1.