

Datasheet for ABIN7273069
anti-Occludin antibody (C-Term)[Go to Product page](#)

7 Images

Overview

Quantity:	300 µg
Target:	Occludin (OCLN)
Binding Specificity:	C-Term
Reactivity:	Human
Host:	Goat
Clonality:	Polyclonal
Application:	Western Blotting (WB), Immunohistochemistry (Paraffin-embedded Sections) (IHC (p)), Immunohistochemistry (Frozen Sections) (IHC (fro))

Product Details

Immunogen:	Peptide derived from within residues 500 aa to the C-terminus of human Occludin.
Isotype:	IgG
Cross-Reactivity (Details):	Reacts against human, rat, mouse, canine and monkey proteins.
Purification:	Epitope affinity purified

Target Details

Target:	Occludin (OCLN)
Alternative Name:	OCLN (OCLN Products)
Pathways:	Cell-Cell Junction Organization , Hepatitis C

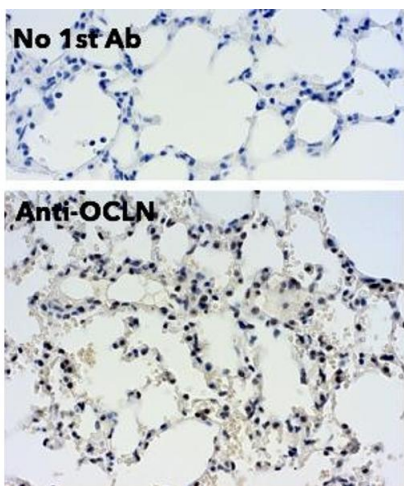
Application Details

Application Notes:	WB:1:500-1:2,000, IHC-P:1:250-1:1,000, IHC-F:1:250-1:1,000
Comment:	Detects endogenous levels of OCLN in MCR, IMCD3, COS7, MDCK, HUH, HEK293, MCF7, mouse brain by Western blot.
Restrictions:	For Research Use only

Handling

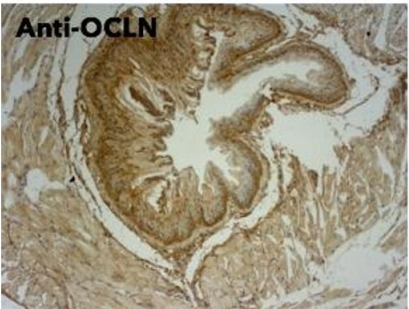
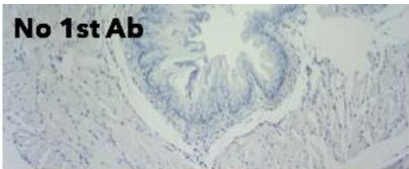
Concentration:	3 mg/mL
Buffer:	PBS, 20 % glycerol and 0.05 % sodium azide
Preservative:	Sodium azide
Precaution of Use:	This product contains Sodium azide: a POISONOUS AND HAZARDOUS SUBSTANCE which should be handled by trained staff only.
Storage:	4 °C, -20 °C
Storage Comment:	Store at -20 °C for long-term storage. Store at 2-8 °C for up to one month.

Images



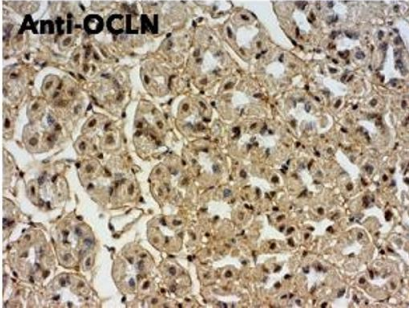
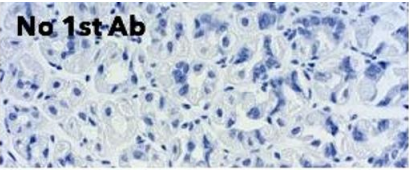
Immunohistochemistry

Image 1.



Immunohistochemistry

Image 2.



Immunohistochemistry

Image 3.

Please check the [product details page](#) for more images. Overall 7 images are available for ABIN7273069.