

## Datasheet for ABIN7273105

**anti-tdTomato antibody**

## 3 Images

[Go to Product page](#)

## Overview

Quantity:	400 µg
Target:	tdTomato
Reactivity:	Discosoma
Host:	Goat
Clonality:	Polyclonal
Conjugate:	This tdTomato antibody is un-conjugated
Application:	Immunofluorescence (IF), Immunohistochemistry (Frozen Sections) (IHC (fro)), Western Blotting (WB), Immunohistochemistry (Paraffin-embedded Sections) (IHC (p)), Immunoelectron Microscopy (IEM)

## Product Details

Immunogen:	Purified recombinant peptide produced in E. coli.
Isotype:	IgG
Cross-Reactivity (Details):	Reacts against tdTomato, mCherry, RFP
Purification:	Epitope affinity purified

## Target Details

Target:	tdTomato
Alternative Name:	tdTomato ( <a href="#">tdTomato Products</a> )
Background:	TdTomato protein is derived from DsRed, an engineered red fluorescent protein from so-called disc corals of the genus Discosoma. It is a genetic fusion of two copies of the dTomato gene,

## Target Details

which has been specifically designed for low aggregation. It's brightness and emission wavelength, makes it ideal for live animal research.

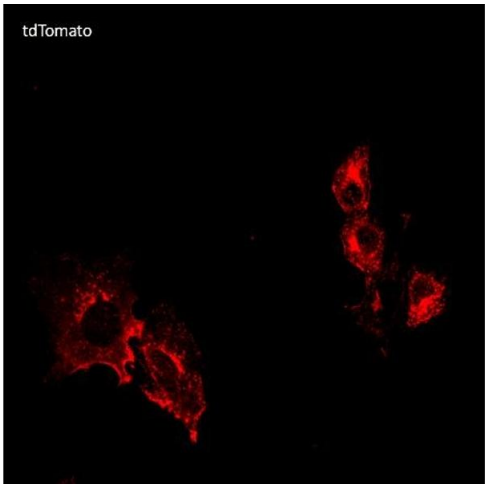
## Application Details

Application Notes:	WB:1:500-1:5,000, IF:1:50-1:500, IHC-P:1:50-1:500, IHC-F:1:50-1:500, IEM:1:50-1:500
Comment:	In 293HEK cells transfected with cds plasmid detects a band of 54 kDa by Western blot. It also detects tdTomato in brain sections by IHC. This antibody is specific for tdTomato and mCherry proteins. It does not cross-react to GFP (green fluorescent protein).
Restrictions:	For Research Use only

## Handling

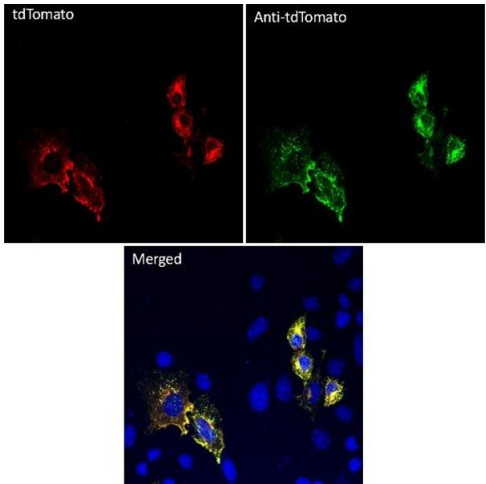
Concentration:	2 mg/mL
Buffer:	NaHCO3 100 mM pH 9, no preservatives
Preservative:	Without preservative
Storage:	4 °C,-20 °C
Storage Comment:	Store at -20 °C for long-term storage. Store at 2-8 °C for up to one month.

## Images



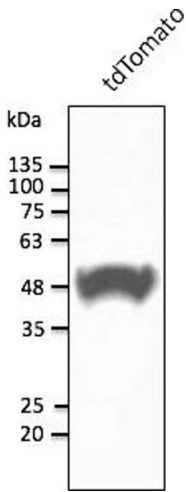
### Immunofluorescence

Image 1.



Immunofluorescence

Image 2.



Western Blotting

Image 3.