

Datasheet for ABIN7273114
anti-tdTomato antibody (DyLight 633)[Go to Product page](#)

2 Images

Overview

Quantity:	250 µg
Target:	tdTomato
Reactivity:	Discosoma
Host:	Goat
Clonality:	Polyclonal
Conjugate:	This tdTomato antibody is conjugated to DyLight 633
Application:	Immunofluorescence (IF), Immunohistochemistry (Frozen Sections) (IHC (fro)), Western Blotting (WB)

Product Details

Immunogen:	Purified recombinant peptide produced in E. coli
Isotype:	IgG
Cross-Reactivity (Details):	Reacts against tdTomato, mCherry, red fluorescent protein (DsRed) from so-called disc corals of Discosoma species.
Purification:	Epitope affinity purified

Target Details

Target:	tdTomato
Alternative Name:	tdTomato (tdTomato Products)
Background:	TdTomato protein is derived from DsRed, an engineered red fluorescent protein from so-called disc corals of the genus Discosoma. It is a genetic fusion of two copies of the dTomato gene,

Target Details

which has been specifically designed for low aggregation. It's brightness and emission wavelength, makes it ideal for live animal research.

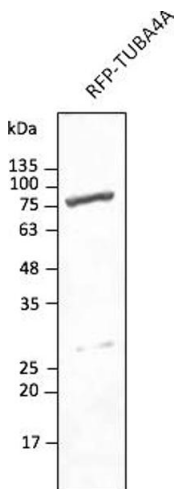
Application Details

Application Notes:	WB:1:500-1:2,000, IF:1:50-1:500, IHC-F:1:50-1:1,000
Comment:	In 293HEK cells transfected with cds plasmid detects a band of 55 kDa by Western blot. It also detects tdTomato in brain sections by IHC. This antibody is specific for tdTomato and mCherry proteins. It does not cross-react to GFP (green fluorescent protein).
Restrictions:	For Research Use only

Handling

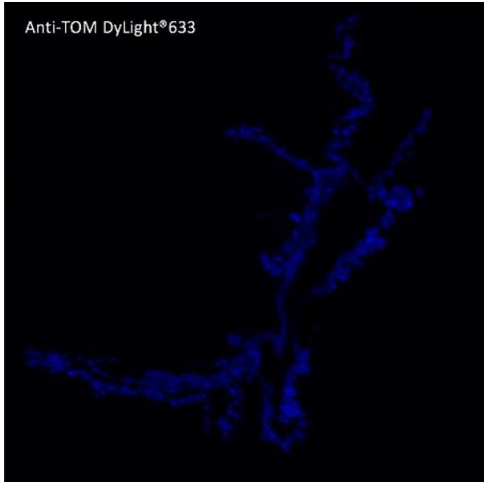
Concentration:	2.5 mg/mL
Buffer:	PBS, 20 % glycerol and 0.05 % sodium azide
Preservative:	Sodium azide
Precaution of Use:	This product contains Sodium azide: a POISONOUS AND HAZARDOUS SUBSTANCE which should be handled by trained staff only.
Storage:	4 °C, -20 °C
Storage Comment:	Store at -20 °C for long-term storage. Store at 2-8 °C for up to one month.

Images



Western Blotting

Image 1.



Immunofluorescence

Image 2.