

Datasheet for ABIN7273184
HLA-B*07:02 protein (SBP Tag)



[Go to Product page](#)

1 Image

Overview

Quantity:	100 µL
Target:	HLA-B*07:02
Origin:	Human
Source:	Mammalian Cells
Protein Type:	Recombinant
Purification tag / Conjugate:	SBP Tag
Application:	Blocking Peptide (BP), Control Peptide (CP), ELISA, Neutralization (Neut)

Product Details

Purpose:	The product is HLA-B*07:02 complexed with β2-microglobulin (b2m)
Sequence:	<p>heavy chain: GSHSMRYFYT SVSRPGRGEP RFISVGYVDD TQFVRFSDA ASPREEPRAP WIEQEGPEYW DRNTQIYKAQ AQTDRSLRN LRGYYNQSEA GSHTLQSMYG CDVGPDRLL RGHDDQYAYDG KDYIALNEDL RSWTAADTAA QITQRKWEAA REAEQRRAYL EGECVEWLRR YLENGKDKLE RADPPKTHVT HHPISDHEAT LRCWALGFYP AEITLTWQRD GEDQTQDTEL VETRPAGDRT FQKWAAVVVP SGEEQRYTCH VQHEGLPKPL TLRWEPSSQS TVPI</p> <p>light chain: IQRTPKIQVY SRHPAENGKS NFLNCYVSGF HPSDIEVDLL KNGERIEKVE HSDLFSKDW SFYLLYYTEF TPTEKDEYAC RVNHVTL SQP KIVKWDRDM</p> <p>Sequences without tags. Tag location is at the discretion of the manufacturer.</p>
Specificity:	<p>HLA-B*07:02 complexed with b2m, P01889 / P61769</p> <p>HLA-B*07:02 presents peptides with the common motif of a proline residue at position 2 and a leucine residue at the c-terminal position 9, e.g. self-peptides derived from signal sequences or</p>

Product Details

viral peptides derived from HIV or SARS-CoV-2.

Characteristics: HLAs are produced in mammalian cell cultures as recombinant, truncated, soluble antigens, in complex with β 2-microglobulin (HLA class I). As part of our quality control, all HLA are analyzed for purity by gel electrophoresis, concentration is determined by ELISA (0.5 mg/ml) and their functionality is verified with a specific antiserum.

Purification: Chromatography

Purity: > 80 %

Endotoxin Level: Endotoxins have not been removed

Target Details

Target: HLA-B*07:02

Background: Human Leukozyte Antigen, human Antigen-presenting major histocompatibility complex class I (MHC I) molecule. Expressed on all cells, displays peptides to CD8-positive T cells. Involved in cellular immune response.

Molecular Weight: approx. 50 kDa (38 kDa heavy chain + 12 kDa b2m)

UniProt: [P01889](#)

Application Details

Application Notes: ELISA: 1 - 100 ng/mL

Comment: sandwich ELISA, direct ELISA, bead ELISA, reactive with antibodies W6/32 and BBM.1 and specific antiserum, B cell ELI Spot (predicted), in vitro memory B cell stimulation (predicted), HLA competition assay (predicted), control in various assays (predicted)

Restrictions: For Research Use only

Handling

Format: Liquid

Concentration: 0.5 mg/mL

Buffer: TRIS based buffer, pH 8.0, Sodium azide

Preservative: Sodium azide

Precaution of Use: This product contains Sodium azide: a POISONOUS AND HAZARDOUS SUBSTANCE which

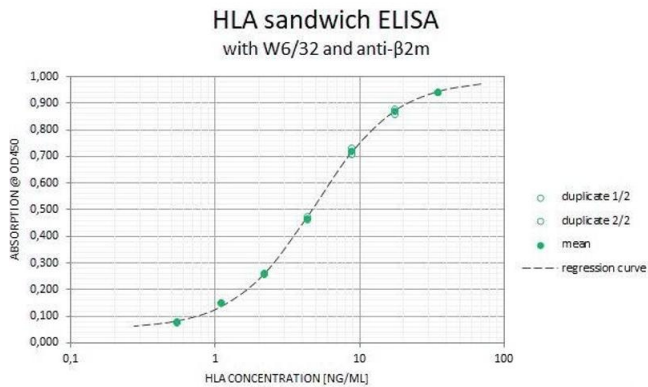
Handling

should be handled by trained staff only.

Storage: 4 °C

Expiry Date: 6 months

Images



ELISA

Image 1. HLA sandwich ELISA standard curve with recombinant HLA-B*07:02 antigen using monoclonal antibodies W6/32 and BBM.1.