

Datasheet for ABIN7273781
2B4 Protein (AA 22-221) (Fc Tag)

3 Images

[Go to Product page](#)

Overview

Quantity:	100 µg
Target:	2B4 (CD244)
Protein Characteristics:	AA 22-221
Origin:	Human
Source:	HEK-293 Cells
Protein Type:	Recombinant
Purification tag / Conjugate:	This 2B4 protein is labelled with Fc Tag.

Product Details

Purpose:	Human 2B4/CD244/SLAMF4 Protein
Sequence:	Cys22-Arg221
Characteristics:	Recombinant Human 2B4/CD244/SLAMF4 Protein is expressed from HEK293 with hFc tag at the C-Terminus. It contains Cys22-Arg221.
Purity:	> 95 % as determined by Tris-Bis PAGE, > 95 % as determined by HPLC
Sterility:	0.22 µm filtered
Endotoxin Level:	Less than 1EU per µg by the LAL method.
Biological Activity Comment:	Immobilized Human CD48, His Tag at 1 µg/ml (100 µl/well) on the plate. Dose response curve for Human 2B4, hFc Tag with the EC50 of 0.45 µg/ml determined by ELISA. See testing image for detail.

Target Details

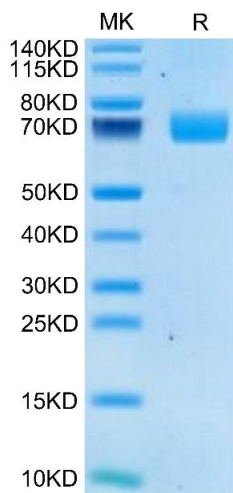
Target:	2B4 (CD244)
Alternative Name:	2B4 (CD244 Products)
Background:	2B4 (CD244) is expressed by memory-phenotype CD8() T cells and all natural killer (NK) cells. The ligand for 2B4, CD48, is expressed on hematopoietic cells. 2B4 is conserved in humans and mice, and a number of reports have linked 2B4 with activation of lymphocytes. Engagement of 2B4 on NK cell surfaces with specific antibodies or CD48 can trigger cell mediated cytotoxicity, interferon γ secretion, phosphoinositol turnover and NK cell invasiveness.
Molecular Weight:	49 kDa. Due to glycosylation, the protein migrates to 68-75 kDa based on Tris-Bis PAGE result.

Application Details

Restrictions:	For Research Use only
---------------	-----------------------

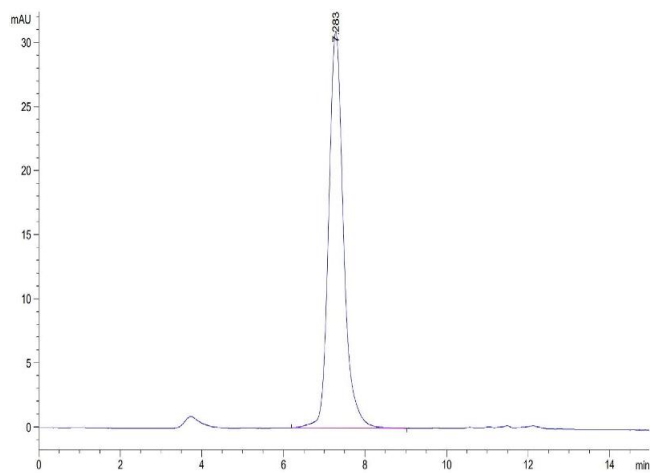
Handling

Format:	Lyophilized
Reconstitution:	Centrifuge the tube before opening. Reconstituting to a concentration more than 100 $\mu\text{g/mL}$ is recommended. Dissolve the lyophilized protein in distilled water.
Buffer:	Lyophilized from 0.22 μm filtered solution in PBS (pH 7.4). Normally 8 % trehalose is added as protectant before lyophilization.
Storage:	-20 $^{\circ}\text{C}$, -80 $^{\circ}\text{C}$
Storage Comment:	-20 to -80 $^{\circ}\text{C}$ for 12 months as supplied from date of receipt., -80 $^{\circ}\text{C}$ for 3-6 months after reconstitution., 2-8 $^{\circ}\text{C}$ for 2-7 days after reconstitution., Recommend to aliquot the protein into smaller quantities for optimal storage. Please minimize freeze-thaw cycles.
Expiry Date:	12 months



SDS-PAGE

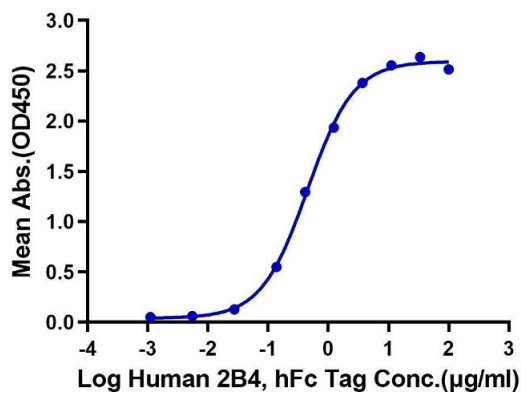
Image 1. Human 2B4/CD244/SLAMF4 on Tris-Bis PAGE under reduced condition. The purity is greater than 95 % .



Size-exclusion chromatography-High Pressure Liquid Chromatography

Image 2. The purity of Human 2B4/CD244/SLAMF4 is greater than 95 % as determined by SEC-HPLC.

Human 2B4, hFc Tag ELISA
0.1µg Human CD48, His Tag Per Well



ELISA

Image 3. Immobilized Human CD48, His Tag at 1 µg/mL (100 µL/well) on the plate. Dose response curve for Human 2B4, hFc Tag with the EC50 of 0.45 µg/mL determined by ELISA.