

Datasheet for ABIN7273792

**ACE2 Protein (AA 18-740) (Fc Tag)****4** Images[Go to Product page](#)

## Overview

Quantity:	100 µg
Target:	ACE2
Protein Characteristics:	AA 18-740
Origin:	Human
Source:	HEK-293 Cells
Protein Type:	Recombinant
Purification tag / Conjugate:	This ACE2 protein is labelled with Fc Tag.

## Product Details

Purpose:	Human ACE2/ACEH Protein
Sequence:	Gln18-Ser740
Characteristics:	Recombinant Human ACE2/ACEH Protein is expressed from HEK293 with hFc tag at the C-Terminus. It contains Gln18-Ser740.
Purity:	> 95 % as determined by Tris-Bis PAGE, > 95 % as determined by HPLC
Sterility:	0.22 µm filtered
Endotoxin Level:	Less than 1EU per µg by the LAL method.
Biological Activity Comment:	Immobilized SARS-COV-2 Spike S (B.1.1.529/Omicron) Trimer, His Tag at 1µg/ml (100µl/well) on the plate. Dose response curve for Human ACE2, hFc Tag with the EC50 of 13.7ng/ml determined by ELISA. See testing image for detail.

## Target Details

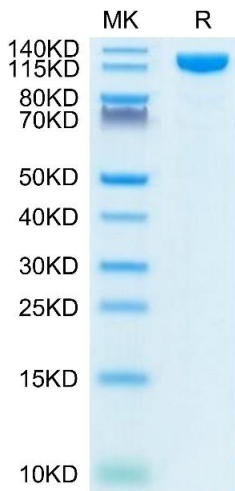
Target:	ACE2
Alternative Name:	ACE2 ( <a href="#">ACE2 Products</a> )
Background:	ACE2 (Angiotensin I Converting Enzyme 2) is a Protein Coding gene. Diseases associated with ACE2 include Severe Acute Respiratory Syndrome and Neurogenic Hypertension. The protein encoded by this gene belongs to the angiotensin-converting enzyme family of dipeptidyl carboxydipeptidases and has considerable homology to human angiotensin 1 converting enzyme. This secreted protein catalyzes the cleavage of angiotensin I into angiotensin 1-9, and angiotensin II into the vasodilator angiotensin 1-7.
Molecular Weight:	109.2 kDa. Due to glycosylation, the protein migrates to 115-130 kDa based on Tris-Bis PAGE result.
Pathways:	<a href="#">ACE Inhibitor Pathway</a> , <a href="#">Peptide Hormone Metabolism</a> , <a href="#">Regulation of Systemic Arterial Blood Pressure by Hormones</a> , <a href="#">Feeding Behaviour</a>

## Application Details

Restrictions:	For Research Use only
---------------	-----------------------

## Handling

Format:	Lyophilized
Reconstitution:	Centrifuge the tube before opening. Reconstituting to a concentration more than 100 µg/mL is recommended. Dissolve the lyophilized protein in distilled water.
Buffer:	Lyophilized from 0.22µm filtered solution in PBS ( pH 7.4). Normally 8 % trehalose is added as protectant before lyophilization.
Storage:	-20 °C,-80 °C
Storage Comment:	-20 to -80°C for 12 months as supplied from date of receipt., -80°C for 3-6 months after reconstitution., 2-8°C for 2-7 days after reconstitution., Recommend to aliquot the protein into smaller quantities for optimal storage. Please minimize freeze-thaw cycles.
Expiry Date:	12 months

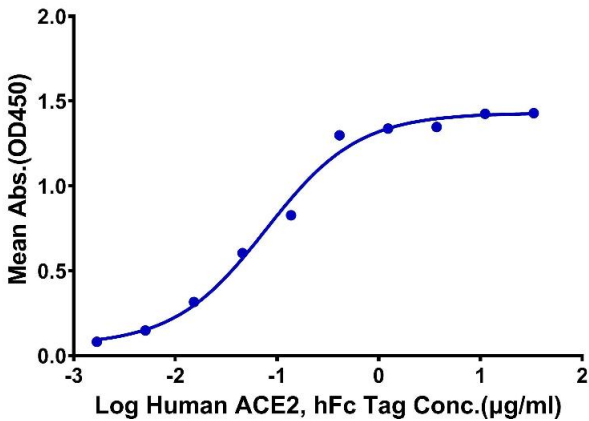


SDS-PAGE

**Image 1.** Human ACE2 on Tris-Bis PAGE under reduced condition. The purity is greater than 95 % .

Human ACE2, hFc Tag ELISA

0.2µg Human SARS-COV-2 Spike S1, His Tag Per Well

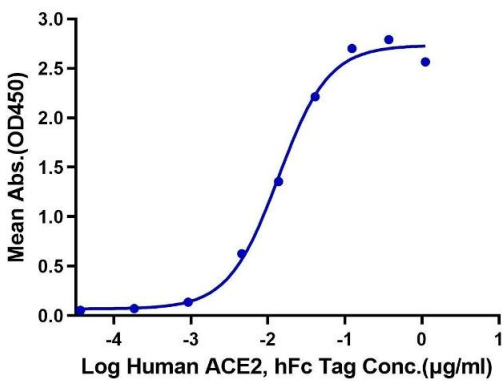


ELISA

**Image 2.** Immobilized Human SARS-COV-2 Spike S1, His Tag at 2 µg/mL (100 µL/Well). Dose response curve for Human ACE2, hFc Tag with the EC50 of 78.1 ng/mL determined by ELISA.

Human ACE2, hFc Tag ELISA

0.1µg SARS-COV-2 Spike S (B.1.1.529/Omicron) Trimer, His Tag Per Well



ELISA

**Image 3.** Immobilized SARS-COV-2 Spike S (B.1.1.529/Omicron) Trimer, His Tag at 1 µg/mL (100 µ L/well) on the plate. Dose response curve for Human ACE2, hFc Tag with the EC50 of 13.7 ng/mL determined by ELISA.

Please check the [product details page](#) for more images. Overall 4 images are available for ABIN7273792.