

Datasheet for ABIN7273997  
**BTLA Protein (AA 31-150) (Fc Tag)**

## 5 Images

[Go to Product page](#)

## Overview

Quantity:	100 µg
Target:	BTLA
Protein Characteristics:	AA 31-150
Origin:	Human
Source:	HEK-293 Cells
Protein Type:	Recombinant
Purification tag / Conjugate:	This BTLA protein is labelled with Fc Tag.

## Product Details

Purpose:	Human BTLA Protein
Sequence:	Lys31-Ser150
Characteristics:	Recombinant Human BTLA Protein is expressed from HEK293 with hFc tag at the C-Terminus. It contains Lys31-Ser150.
Purity:	> 95 % as determined by Tris-Bis PAGE, > 95 % as determined by HPLC
Sterility:	0.22 µm filtered
Endotoxin Level:	Less than 1EU per µg by the LAL method.
Biological Activity Comment:	Immobilized Human HVEM, His Tag at 2µg/ml (100µl/Well) on the plate. Dose response curve for Human BTLA, hFc Tag with the EC50 of 19.9ng/ml determined by ELISA. See testing image for detail.

## Target Details

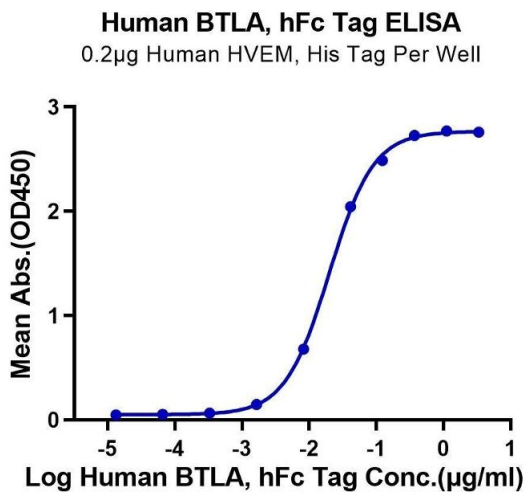
Target:	BTLA
Alternative Name:	BTLA ( <a href="#">BTLA Products</a> )
Background:	B- and T-lymphocyte attenuator (BTLA, CD272) is a 35 kDa type I transmembrane glycoprotein in the CD28 family of T cell costimulatory molecules. BTLA is a inhibitory receptor on lymphocytes that negatively regulates antigen receptor signaling via PTPN6/SHP-1 and PTPN11/SHP-2. BTLA may interact in cis (on the same cell) or in trans (on other cells) with TNFRSF14.
Molecular Weight:	40.5 kDa. Due to glycosylation, the protein migrates to 60-70 kDa based on Tris-Bis PAGE result.
Pathways:	<a href="#">Cancer Immune Checkpoints</a>

## Application Details

Restrictions:	For Research Use only
---------------	-----------------------

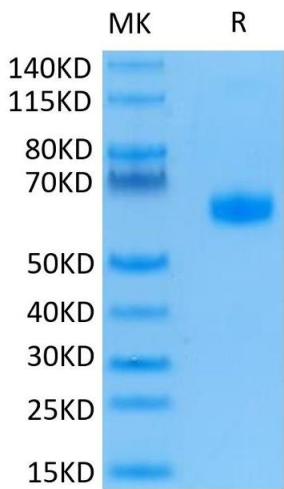
## Handling

Format:	Lyophilized
Reconstitution:	Centrifuge the tube before opening. Reconstituting to a concentration more than 100 µg/mL is recommended. Dissolve the lyophilized protein in distilled water.
Buffer:	Lyophilized from 0.22µm filtered solution in PBS ( pH 7.4). Normally 8 % trehalose is added as protectant before lyophilization.
Storage:	-20 °C,-80 °C
Storage Comment:	-20 to -80°C for 12 months as supplied from date of receipt., -80°C for 3-6 months after reconstitution., 2-8°C for 2-7 days after reconstitution., Recommend to aliquot the protein into smaller quantities for optimal storage. Please minimize freeze-thaw cycles.
Expiry Date:	12 months



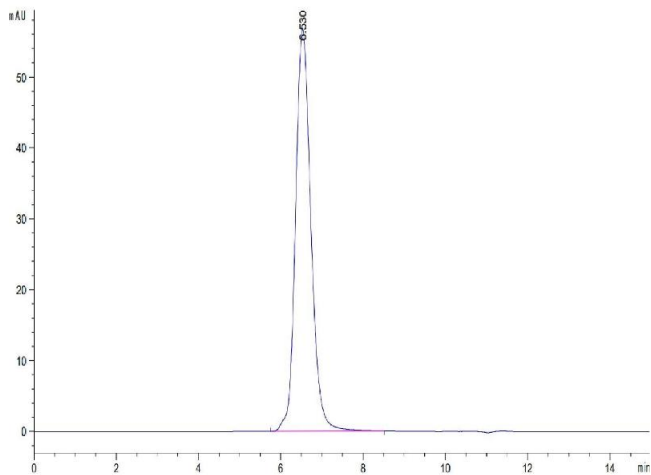
**ELISA**

**Image 1.** Immobilized Human HVEM, His Tag at 2 µg/mL (100 µL/Well) on the plate. Dose response curve for Human BTLA, hFc Tag with the EC50 of 19.9 ng/mL determined by ELISA.



**SDS-PAGE**

**Image 2.** Human BTLA on Tris-Bis PAGE under reduced condition. The purity is greater than 95 % .



**Size-exclusion chromatography-High Pressure Liquid Chromatography**

**Image 3.** The purity of Human BTLA is greater than 95 % as determined by SEC-HPLC.

Please check the [product details page](#) for more images. Overall 5 images are available for ABIN7273997.