

Datasheet for ABIN7273999

BTLA Protein (His-Avi Tag,Biotin)

4 Images

[Go to Product page](#)

Overview

Quantity:	100 µg
Target:	BTLA
Origin:	Human
Source:	HEK-293 Cells
Protein Type:	Recombinant
Purification tag / Conjugate:	This BTLA protein is labelled with His-Avi Tag,Biotin.

Product Details

Sequence:	Lys31-Ser150
Purity:	> 95% as determined by Tris-Bis PAGE,> 95% as determined by HPLC
Sterility:	0.22 µm filtered
Endotoxin Level:	Less than 1EU per µg by the LAL method.
Biological Activity Comment:	Immobilized Anti-BTLA Antibody, hFc Tag at 0.5µg/ml (100µl/well) on the plate. Dose response curve for Biotinylated Human BTLA, His Tag with the EC50 of 8.0ng/ml determined by ELISA. See testing image for detail.

Target Details

Target:	BTLA
Alternative Name:	BTLA (BTLA Products)
Background:	CD272, BTLA, BTLA1, FLJ16065, MGC129743,B- and T-lymphocyte attenuator (BTLA, CD272) is a 35 kDa type I transmembrane glycoprotein in the CD28 family of T cell costimulatory

Target Details

molecules. BTLA is a inhibitory receptor on lymphocytes that negatively regulates antigen receptor signaling via PTPN6/SHP-1 and PTPN11/SHP-2. BTLA may interact in cis (on the same cell) or in trans (on other cells) with TNFRSF14.

Molecular Weight: 16.7 kDa. Due to glycosylation, the protein migrates to 38-50 kDa based on Tris-Bis PAGE result.

Pathways: [Cancer Immune Checkpoints](#)

Application Details

Restrictions: For Research Use only

Handling

Format: Lyophilized

Reconstitution: Centrifuge tubes before opening. Reconstituting to a concentration more than 100 µg/mL is recommended (usually we use 1 mg/mL solution for lyophilization). Dissolve the lyophilized protein in distilled water.

Buffer: Lyophilized from 0.22µm filtered solution in PBS (pH 7.4). Normally 5 % trehalose is added as protectant before lyophilization.

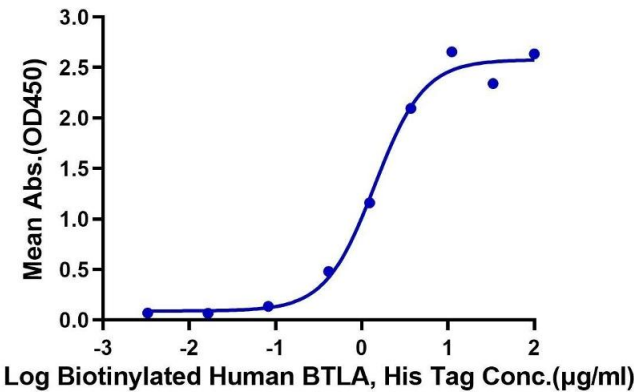
Storage: 4 °C,-80 °C

Storage Comment: Reconstituted protein stable at -80°C for 12 months, 4°C for 1 week. Use a manual defrost freezer and avoid repeated freeze-thaw cycles.

Expiry Date: 12 months

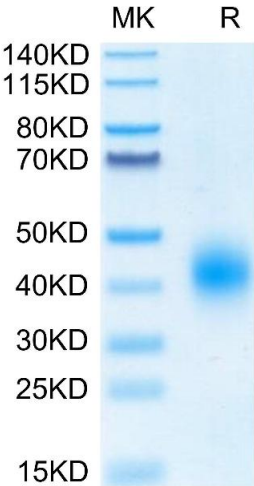
Images

Biotinylated Human BTLA, His Tag ELISA
0.5µg Human HVEM, hFc Tag Per Well



ELISA

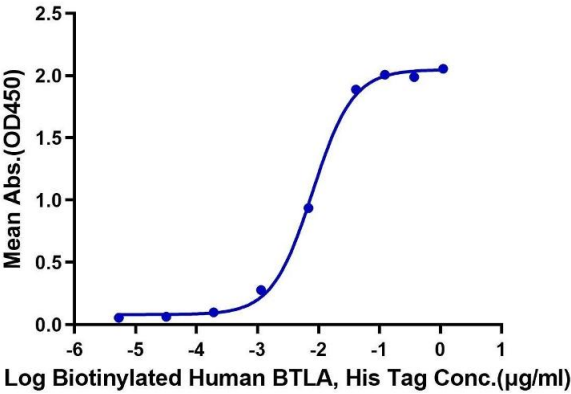
Image 1. Immobilized Human HVEM, hFc Tag at 5 µg/mL (100 µL/Well) on the plate. Dose response curve for Biotinylated Human BTLA, His Tag with the EC50 of 1.4 µg/mL determined by ELISA.



SDS-PAGE

Image 2. Biotinylated Human BTLA on Tris-Bis PAGE under reduced condition. The purity is greater than 95 % .

Biotinylated Human BTLA, His Tag ELISA
0.05µg Anti-BTLA antibody, hFc Tag Per Well



ELISA

Image 3. Immobilized Anti-BTLA Antibody, hFc Tag at 0.5 µg/mL (100 µL/well) on the plate. Dose response curve for Biotinylated Human BTLA, His Tag with the EC50 of 8.0 ng/mL determined by ELISA.

Please check the [product details page](#) for more images. Overall 4 images are available for ABIN7273999.