

Datasheet for ABIN7274010

CYTL1 Protein (AA 23-136) (Fc Tag)[Go to Product page](#)**2** Images

Overview

Quantity:	100 µg
Target:	CYTL1
Protein Characteristics:	AA 23-136
Origin:	Human
Source:	HEK-293 Cells
Protein Type:	Recombinant
Purification tag / Conjugate:	This CYTL1 protein is labelled with Fc Tag.

Product Details

Purpose:	Human CYTL1/C17 Protein
Sequence:	Thr23-Arg136
Characteristics:	Recombinant Human CYTL1/C17 Protein is expressed from HEK293 with hFc tag at the C-Terminus. It contains Thr23-Arg136.
Purity:	> 95 % as determined by Tris-Bis PAGE, > 95 % as determined by HPLC
Sterility:	0.22 µm filtered
Endotoxin Level:	Less than 1EU per µg by the LAL method.

Target Details

Target:	CYTL1
Alternative Name:	CYTL1 (CYTL1 Products)

Target Details

Background:	Cytokine-like protein 1 (Cyt11), also named Protein C17 or C4orf4 is located on human chromosome 4p15-p16 and encodes a polypeptide of 126 amino acid residues that displays characteristics of a secretory protein. Cyt11 is expressed by a sub-population of CD34 human mononuclear cells from bone marrow and cord blood, and by chondrocytes (cartilage-forming cells).
Molecular Weight:	42.34 kDa. Due to glycosylation, the protein migrates to 50-55 kDa based on Tris-Bis PAGE result.
NCBI Accession:	NP_061129
Pathways:	Glycosaminoglycan Metabolic Process

Application Details

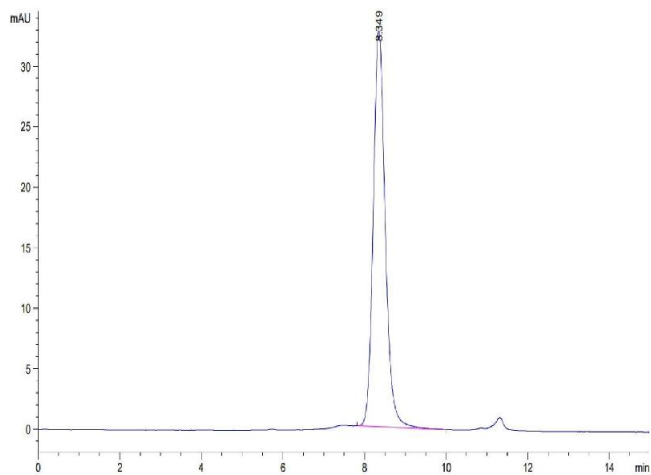
Restrictions:	For Research Use only
---------------	-----------------------

Handling

Format:	Lyophilized
Reconstitution:	Centrifuge the tube before opening. Reconstituting to a concentration more than 100 µg/mL is recommended. Dissolve the lyophilized protein in distilled water.
Buffer:	Lyophilized from 0.22µm filtered solution in PBS (pH 7.4). Normally 8 % trehalose is added as protectant before lyophilization.
Storage:	-20 °C,-80 °C
Storage Comment:	-20 to -80°C for 12 months as supplied from date of receipt.,-80°C for 3-6 months after reconstitution.,2-8°C for 2-7 days after reconstitution.,Recommend to aliquot the protein into smaller quantities for optimal storage. Please minimize freeze-thaw cycles.
Expiry Date:	12 months

Size-exclusion chromatography-High Pressure Liquid Chromatography

Image 1. The purity of Human CYTL1/C17 is greater than 95 % as determined by SEC-HPLC.



SDS-PAGE

Image 2. Human CYTL1/C17 on Tris-Bis PAGE under reduced condition. The purity is greater than 95 % .

