

Datasheet for ABIN7274016

**CADM1 Protein (AA 45-374) (His tag)****3** Images[Go to Product page](#)

## Overview

|                               |                                              |
|-------------------------------|----------------------------------------------|
| Quantity:                     | 100 µg                                       |
| Target:                       | CADM1                                        |
| Protein Characteristics:      | AA 45-374                                    |
| Origin:                       | Human                                        |
| Source:                       | HEK-293 Cells                                |
| Protein Type:                 | Recombinant                                  |
| Purification tag / Conjugate: | This CADM1 protein is labelled with His tag. |

## Product Details

|                              |                                                                                                                                                                                                          |
|------------------------------|----------------------------------------------------------------------------------------------------------------------------------------------------------------------------------------------------------|
| Purpose:                     | Human CADM1/IGSF4A Protein                                                                                                                                                                               |
| Sequence:                    | Gln45-His374                                                                                                                                                                                             |
| Characteristics:             | Recombinant Human CADM1/IGSF4A Protein is expressed from HEK293 with His tag at the C-Terminus. It contains Gln45-His374.                                                                                |
| Purity:                      | > 95 % as determined by Tris-Bis PAGE, > 95 % as determined by HPLC                                                                                                                                      |
| Sterility:                   | 0.22 µm filtered                                                                                                                                                                                         |
| Endotoxin Level:             | Less than 1EU per µg by the LAL method.                                                                                                                                                                  |
| Biological Activity Comment: | Immobilized Human CADM1, His Tag at 0.5µg/ml (100µl/well) on the plate. Dose response curve for Anti-CADM1 Antibody, hFc Tag with the EC50 of 8.5g/ml determined by ELISA. See testing image for detail. |

## Target Details

|                   |                                                                                                                                                                                                                                                                                                                                                                                                                                                                                                                             |
|-------------------|-----------------------------------------------------------------------------------------------------------------------------------------------------------------------------------------------------------------------------------------------------------------------------------------------------------------------------------------------------------------------------------------------------------------------------------------------------------------------------------------------------------------------------|
| Target:           | CADM1                                                                                                                                                                                                                                                                                                                                                                                                                                                                                                                       |
| Alternative Name: | CADM1 ( <a href="#">CADM1 Products</a> )                                                                                                                                                                                                                                                                                                                                                                                                                                                                                    |
| Background:       | The cell adhesion molecule 1 (CADM1) is a molecule of cell adhesion with multiple functions and has been identified as a tumor suppressor gene. CADM1 has multifunctions on the pathogenesis of malignancies, and other normal cells such as immune cells. On the contrary to these cutaneous solid tumors except for Merkel cell carcinoma, cutaneous lymphomas, such as adult-T cell leukemia/lymphoma, mycosis fungoides, and Sézary syndrome, increase their CADM1 expression for the development of tumor environment. |
| Molecular Weight: | 38 kDa. Due to glycosylation, the protein migrates to 60-70 kDa based on Tris-Bis PAGE result.                                                                                                                                                                                                                                                                                                                                                                                                                              |
| Pathways:         | <a href="#">Regulation of Leukocyte Mediated Immunity</a> , <a href="#">Positive Regulation of Immune Effector Process</a> , <a href="#">Cell-Cell Junction Organization</a> , <a href="#">Activated T Cell Proliferation</a>                                                                                                                                                                                                                                                                                               |

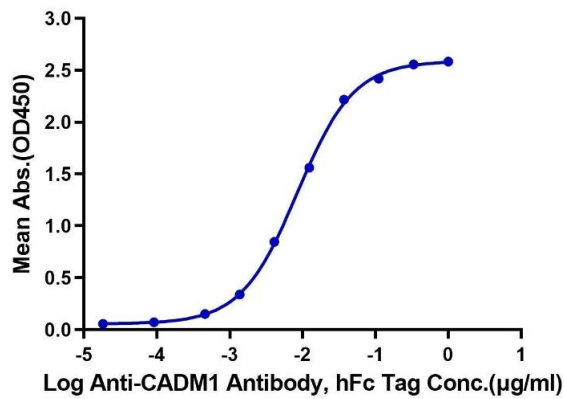
## Application Details

|               |                       |
|---------------|-----------------------|
| Restrictions: | For Research Use only |
|---------------|-----------------------|

## Handling

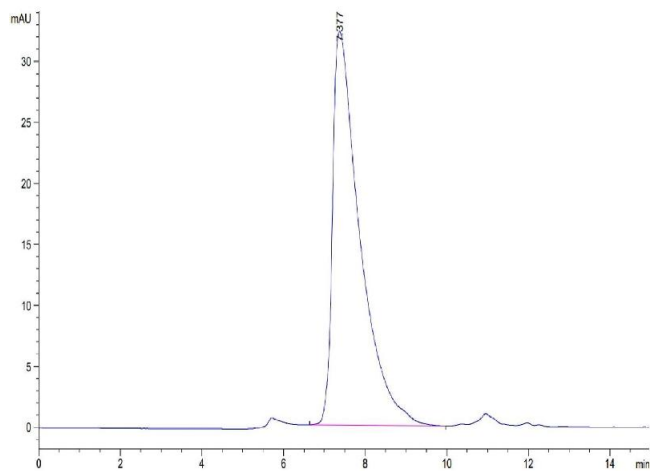
|                  |                                                                                                                                                                                                                                                                    |
|------------------|--------------------------------------------------------------------------------------------------------------------------------------------------------------------------------------------------------------------------------------------------------------------|
| Format:          | Lyophilized                                                                                                                                                                                                                                                        |
| Reconstitution:  | Centrifuge the tube before opening. Reconstituting to a concentration more than 100 µg/mL is recommended. Dissolve the lyophilized protein in distilled water.                                                                                                     |
| Buffer:          | Lyophilized from 0.22µm filtered solution in PBS ( pH 7.4). Normally 8 % trehalose is added as protectant before lyophilization.                                                                                                                                   |
| Storage:         | -20 °C,-80 °C                                                                                                                                                                                                                                                      |
| Storage Comment: | -20 to -80°C for 12 months as supplied from date of receipt.,-80°C for 3-6 months after reconstitution.,2-8°C for 2-7 days after reconstitution.,Recommend to aliquot the protein into smaller quantities for optimal storage. Please minimize freeze-thaw cycles. |
| Expiry Date:     | 12 months                                                                                                                                                                                                                                                          |

**Human CADM1, His Tag ELISA**  
0.05µg Human CADM1, His Tag Per Well



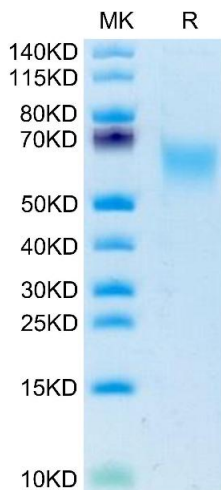
**ELISA**

**Image 1.** Immobilized Human CADM1, His Tag at 0.5 µg/mL (100 µL/well) on the plate. Dose response curve for Anti-CADM1 Antibody, hFc Tag with the EC50 of 8.5g/mL determined by ELISA.



**Size-exclusion chromatography-High Pressure Liquid Chromatography**

**Image 2.** The purity of Human CADM1 is greater than 95 % as determined by SEC-HPLC.



**SDS-PAGE**

**Image 3.** Human CADM1 on Tris-Bis PAGE under reduced condition. The purity is greater than 95 % .