

Datasheet for ABIN7274023

EpCAM Protein (AA 24-265) (His tag)**3** Images[Go to Product page](#)

Overview

Quantity:	100 µg
Target:	EpCAM (EPCAM)
Protein Characteristics:	AA 24-265
Origin:	Rhesus Monkey, Cynomolgus
Source:	HEK-293 Cells
Protein Type:	Recombinant
Purification tag / Conjugate:	This EpCAM protein is labelled with His tag.

Product Details

Purpose:	Cynomolgus/Rhesus macaque EpCAM/TROP1 Protein
Sequence:	Gln24-Lys265
Characteristics:	Recombinant Cynomolgus/Rhesus macaque EpCAM/TROP1 Protein is expressed from HEK293 with His tag at the C-Terminus. It contains Gln24-Lys265.
Purity:	> 95 % as determined by Tris-Bis PAGE, > 95 % as determined by HPLC
Sterility:	0.22 µm filtered
Endotoxin Level:	Less than 1EU per µg by the LAL method.
Biological Activity Comment:	The affinity constant of 21.40 nM as determined in SPR assay (Biacore T200). See testing image for detail.

Target Details

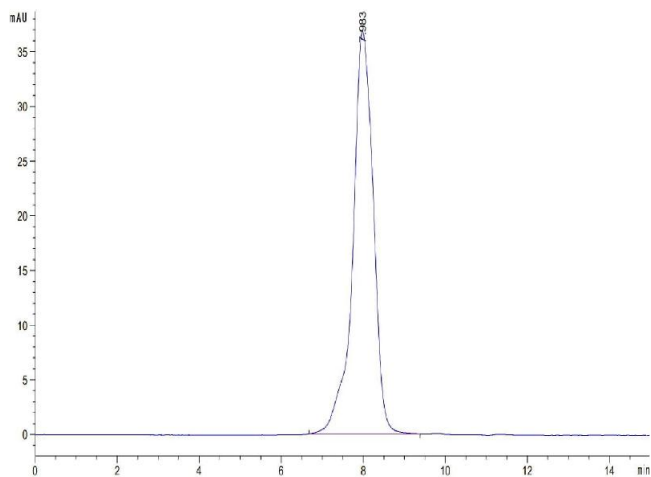
Target:	EpCAM (EPCAM)
Alternative Name:	EpCAM (EPCAM Products)
Background:	Epithelial Cellular Adhesion Molecule (EpCAM), also known as KS1/4, gp40, GA733-2, 17-1A, and TROP-1, is a 40 kDa transmembrane glycoprotein that consists of a 242 amino acid (aa) extracellular domain with two EGF-like repeats, a 23 aa transmembrane segment, and a 26 aa cytoplasmic domain.
Molecular Weight:	28.5 kDa. Due to glycosylation, the protein migrates to 35-45 kDa based on Tris-Bis PAGE result.
NCBI Accession:	NP_001035118

Application Details

Restrictions:	For Research Use only
---------------	-----------------------

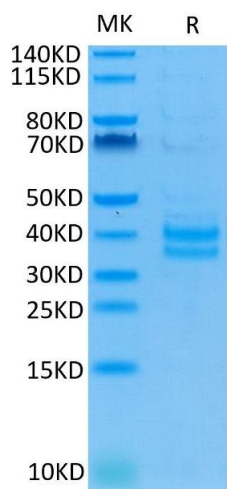
Handling

Format:	Lyophilized
Reconstitution:	Centrifuge the tube before opening. Reconstituting to a concentration more than 100 µg/mL is recommended. Dissolve the lyophilized protein in distilled water.
Buffer:	Lyophilized from 0.22µm filtered solution in PBS (pH 7.4). Normally 8 % trehalose is added as protectant before lyophilization.
Storage:	-20 °C,-80 °C
Storage Comment:	-20 to -80°C for 12 months as supplied from date of receipt., -80°C for 3-6 months after reconstitution., 2-8°C for 2-7 days after reconstitution., Recommend to aliquot the protein into smaller quantities for optimal storage. Please minimize freeze-thaw cycles.
Expiry Date:	12 months



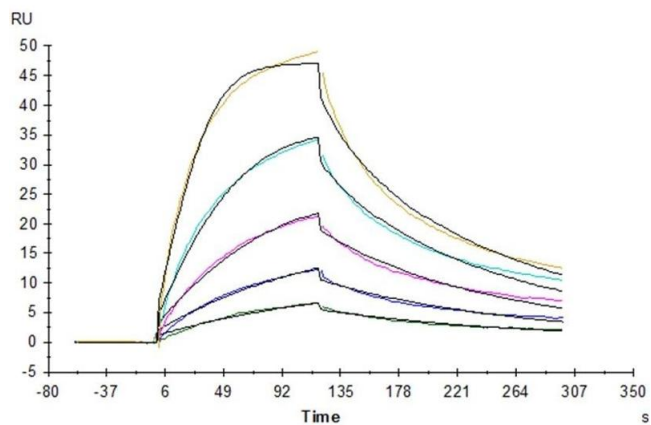
Size-exclusion chromatography-High Pressure Liquid Chromatography

Image 1. The purity of Cynomolgus EpCAM is greater than 95 % as determined by SEC-HPLC.



SDS-PAGE

Image 2. Cynomolgus EpCAM on Tris-Bis PAGE under reduced condition. The purity is greater than 95 % .



Surface Plasmon Resonance

Image 3. Cynomolgus EpCAM, His Tag captured on CM5 Chip via Anti-His Antibody can bind Anti-EpCAM Antibody, hFc Tag with an affinity constant of 21.40 nM as determined in SPR assay (Biacore T200).