

Datasheet for ABIN7274026

EpCAM Protein (AA 24-265) (Fc Tag)**3** Images[Go to Product page](#)

Overview

Quantity:	100 µg
Target:	EpCAM (EPCAM)
Protein Characteristics:	AA 24-265
Origin:	Human
Source:	HEK-293 Cells
Protein Type:	Recombinant
Purification tag / Conjugate:	This EpCAM protein is labelled with Fc Tag.

Product Details

Purpose:	Human EpCAM/TROP1 Protein
Sequence:	Gln24-Lys265
Characteristics:	Recombinant Human EpCAM/TROP1 Protein is expressed from HEK293 with hFc tag at the C-Terminus. It contains Gln24-Lys265.
Purity:	> 95 % as determined by Tris-Bis PAGE, > 95 % as determined by HPLC
Sterility:	0.22 µm filtered
Endotoxin Level:	Less than 1EU per µg by the LAL method.
Biological Activity Comment:	Immobilized Human EpCAM, hFc Tag at 1µg/ml (100µl/well) on the plate. Dose response curve for Biotinylated Anti-EpCAM Antibody, hFc Tag with the EC50 of 18.9ng/ml determined by ELISA. See testing image for detail.

Target Details

Target:	EpCAM (EPCAM)
Alternative Name:	EpCAM (EPCAM Products)
Background:	Epithelial Cellular Adhesion Molecule (EpCAM), also known as KS1/4, gp40, GA733-2, 17-1A, and TROP-1, is a 40 kDa transmembrane glycoprotein that consists of a 242 amino acid (aa) extracellular domain with two EGF-like repeats, a 23 aa transmembrane segment, and a 26 aa cytoplasmic domain.
Molecular Weight:	54.2 kDa. Due to glycosylation, the protein migrates to 60-70 kDa based on Tris-Bis PAGE result.
UniProt:	P16422

Application Details

Restrictions:	For Research Use only
---------------	-----------------------

Handling

Format:	Lyophilized
Reconstitution:	Centrifuge the tube before opening. Reconstituting to a concentration more than 100 µg/mL is recommended. Dissolve the lyophilized protein in distilled water.
Buffer:	Lyophilized from 0.22µm filtered solution in PBS (pH 7.4). Normally 8 % trehalose is added as protectant before lyophilization.
Storage:	-20 °C,-80 °C
Storage Comment:	-20 to -80°C for 12 months as supplied from date of receipt., -80°C for 3-6 months after reconstitution., 2-8°C for 2-7 days after reconstitution., Recommend to aliquot the protein into smaller quantities for optimal storage. Please minimize freeze-thaw cycles.
Expiry Date:	12 months

Size-exclusion chromatography-High Pressure Liquid Chromatography

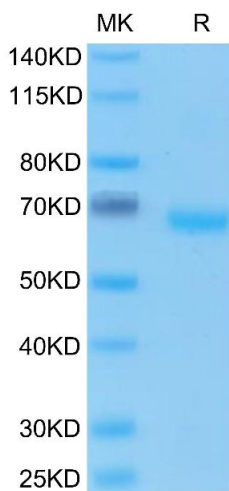
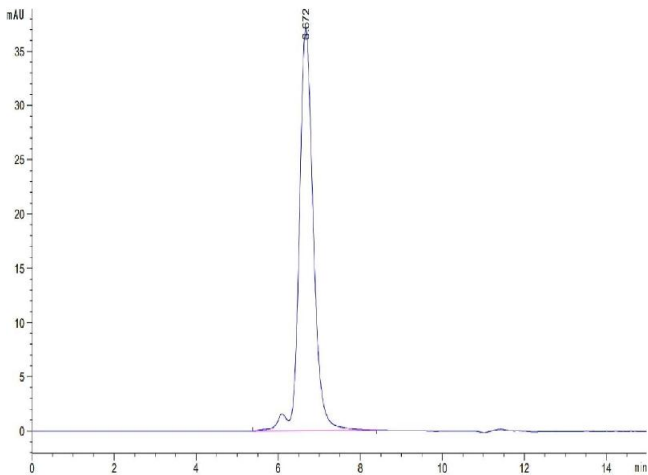
Image 1. The purity of Human EpCAM is greater than 95 % as determined by SEC-HPLC.

SDS-PAGE

Image 2. Human EpCAM on Tris-Bis PAGE under reduced condition. The purity is greater than 95 % ..

ELISA

Image 3. Immobilized Human EpCAM, hFc Tag at 1 µg/mL (100 µL/well) on the plate. Dose response curve for Biotinylated Anti-EpCAM Antibody, hFc Tag with the EC50 of 18.9 ng/mL determined by ELISA.



Human EpCAM, hFc Tag ELISA
0.1µg Human EpCAM, hFc Tag Per Well

