

Datasheet for ABIN7274034

Complement C2 Protein (AA 21-752) (His tag)**2** Images[Go to Product page](#)

Overview

Quantity:	100 µg
Target:	Complement C2
Protein Characteristics:	AA 21-752
Origin:	Cynomolgus
Source:	HEK-293 Cells
Protein Type:	Recombinant
Purification tag / Conjugate:	This Complement C2 protein is labelled with His tag.

Product Details

Purpose:	Cynomolgus Complement Component C2 Protein
Sequence:	Ala21-Leu752
Characteristics:	Recombinant Cynomolgus Complement Component C2 Protein is expressed from HEK293 with His tag at the C-Terminus. It contains Ala21-Leu752.
Purity:	> 95 % as determined by Tris-Bis PAGE, > 95 % as determined by HPLC
Sterility:	0.22 µm filtered
Endotoxin Level:	Less than 1EU per µg by the LAL method.

Target Details

Target:	Complement C2
Alternative Name:	Complement Component C2 (Complement C2 Products)

Target Details

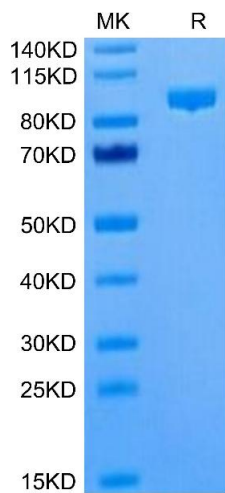
Background:	Single nucleotide polymorphism (SNP) of complement component 2 (C2) has been found to be significantly associated with hepatocellular carcinoma (HCC). Significantly lower C2 expression was found at HCC compared to healthy controls, and C2 was associated with TNM stages. Higher C2 expression was significantly associated with better prognosis, and multivariate analysis showed that C2 was also an independent factor for the prognosis of HCC.
Molecular Weight:	82.18 kDa. Due to glycosylation, the protein migrates to 90-110 kDa based on Tris-Bis PAGE result.
NCBI Accession:	XP_005553508

Application Details

Restrictions:	For Research Use only
---------------	-----------------------

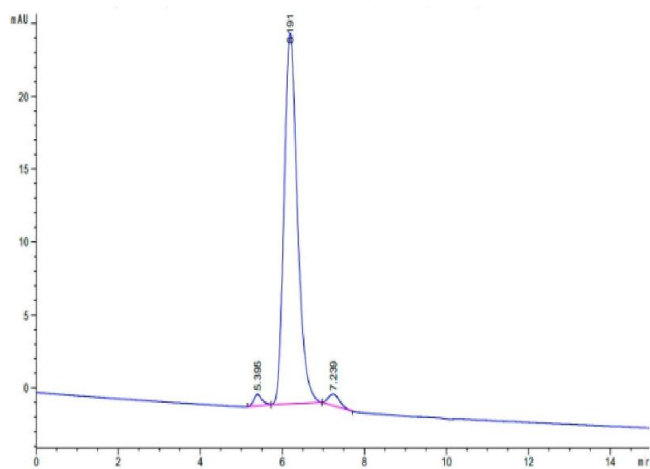
Handling

Format:	Lyophilized
Reconstitution:	Centrifuge the tube before opening. Reconstituting to a concentration more than 100 µg/mL is recommended. Dissolve the lyophilized protein in distilled water.
Buffer:	Lyophilized from 0.22µm filtered solution in PBS (pH 7.4). Normally 8 % trehalose is added as protectant before lyophilization.
Storage:	-20 °C,-80 °C
Storage Comment:	-20 to -80°C for 12 months as supplied from date of receipt.,-80°C for 3-6 months after reconstitution.,2-8°C for 2-7 days after reconstitution.,Recommend to aliquot the protein into smaller quantities for optimal storage. Please minimize freeze-thaw cycles.
Expiry Date:	12 months



SDS-PAGE

Image 1. Cynomolgus Complement Component C2 on Tris-Bis PAGE under reduced condition. The purity is greater than 95 % .



Size-exclusion chromatography-High Pressure Liquid Chromatography

Image 2. The purity of Cynomolgus Complement Component C2 is greater than 95 % as determined by SEC-HPLC.