

Datasheet for ABIN7274036

C3 Protein (AA 23-1663) (His tag)**2** Images[Go to Product page](#)

Overview

Quantity:	100 µg
Target:	C3
Protein Characteristics:	AA 23-1663
Origin:	Human
Source:	HEK-293 Cells
Protein Type:	Recombinant
Purification tag / Conjugate:	This C3 protein is labelled with His tag.

Product Details

Purpose:	Human Complement component 3 Protein
Sequence:	Ser23-Asn1663
Characteristics:	Recombinant Human Complement component 3 Protein is expressed from HEK293 with His tag at the C-Terminus.It contains Ser23-Asn1663.
Purity:	> 95 % as determined by Tris-Bis PAGE,> 95 % as determined by HPLC
Sterility:	0.22 µm filtered
Endotoxin Level:	Less than 1EU per µg by the LAL method.

Target Details

Target:	C3
Alternative Name:	Complement component 3 (C3 Products)

Target Details

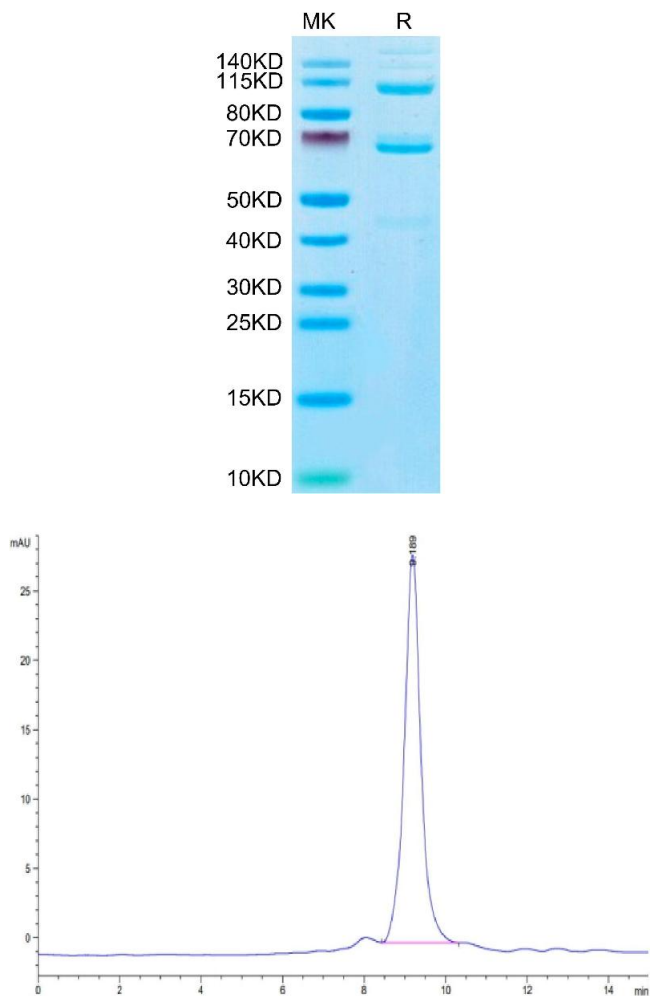
Background:	Complement component 3 (C3), a pivotal molecule in the complement system, is an essential immune mediator in various diseases, including psoriasis. C3 deficiency promoted imiquimod-induced skin cell apoptosis and supported greater proportions of IFN- γ T cells in the inflamed tissues.
Molecular Weight:	188.52 kDa. Due to enzyme lysis and glycosylation, the protein migrates to 67-68 kDa, 110-115 kDa and 140-160 kDa based on Tris-Bis PAGE result.
UniProt:	P01024
Pathways:	Complement System , Regulation of Leukocyte Mediated Immunity , Positive Regulation of Immune Effector Process , Regulation of G-Protein Coupled Receptor Protein Signaling

Application Details

Restrictions:	For Research Use only
---------------	-----------------------

Handling

Format:	Lyophilized
Reconstitution:	Centrifuge the tube before opening. Reconstituting to a concentration more than 100 μ g/mL is recommended. Dissolve the lyophilized protein in distilled water.
Buffer:	Lyophilized from 0.22 μ m filtered solution in PBS (pH 7.4). Normally 8 % trehalose is added as protectant before lyophilization.
Storage:	-20 °C,-80 °C
Storage Comment:	-20 to -80°C for 12 months as supplied from date of receipt.,-80°C for 3-6 months after reconstitution.,2-8°C for 2-7 days after reconstitution.,Recommend to aliquot the protein into smaller quantities for optimal storage. Please minimize freeze-thaw cycles.
Expiry Date:	12 months



SDS-PAGE

Image 1. Human Complement component 3 Protein on Tris-Bis PAGE under reduced condition. The purity is greater than 95 % .

Size-exclusion chromatography-High Pressure Liquid Chromatography

Image 2. The purity of Human Complement component 3 is greater than 95 % as determined by SEC-HPLC.