

Datasheet for ABIN7274042

CCL5 Protein (AA 24-91) (His tag,SUMO Tag)**2** Images[Go to Product page](#)

Overview

Quantity:	100 µg
Target:	CCL5
Protein Characteristics:	AA 24-91
Origin:	Human
Source:	Escherichia coli (E. coli)
Protein Type:	Recombinant
Purification tag / Conjugate:	This CCL5 protein is labelled with His tag,SUMO Tag.

Product Details

Purpose:	Human CCL5 Protein
Sequence:	Ser24-Ser91
Characteristics:	Recombinant Human CCL5 Protein is expressed from E.coli with His-SUMO tag at the N-Terminus.It contains Ser24-Ser91.
Purity:	> 95 % as determined by Tris-Bis PAGE
Sterility:	0.22 µm filtered
Endotoxin Level:	Less than 1EU per µg by the LAL method.
Biological Activity Comment:	Immobilized Human CCL5, His Tag at 0.5µg/ml (100µl/Well) on the plate. Dose response curve for Anti-CCL5 Antibody, hFc Tag with the EC50 of 8ng/ml determined by ELISA. See testing image for detail.

Target Details

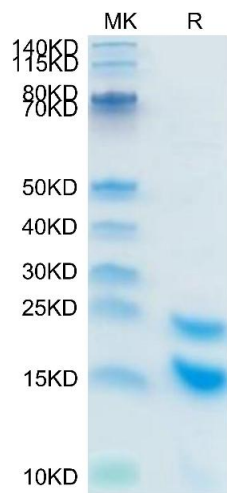
Target:	CCL5
Alternative Name:	CCL5 (CCL5 Products)
Background:	The CCR5 and the CCL5 ligand have been detected in some hematological malignancies, lymphomas, and a great number of solid tumors, but extensive studies on the role of the CCL5/CCR axis were performed only in a limited number of cancers.
Molecular Weight:	21 kDa. Due to the protein can cleaved into two chains, so it migrates to 15-18 kDa and 22-25 kDa based on Tris-Bis PAGE result.
UniProt:	P13501
Pathways:	Cellular Response to Molecule of Bacterial Origin , Regulation of G-Protein Coupled Receptor Protein Signaling , Smooth Muscle Cell Migration

Application Details

Restrictions:	For Research Use only
---------------	-----------------------

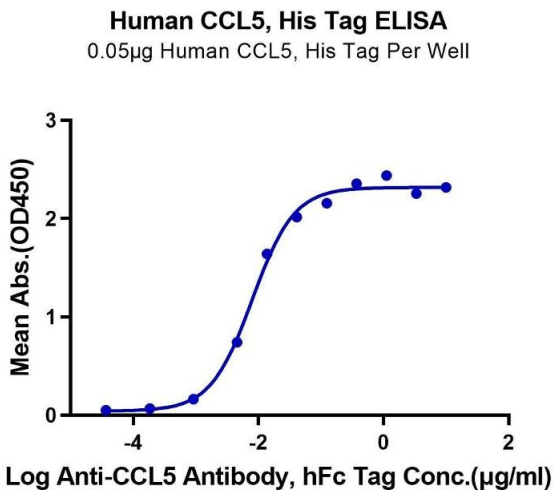
Handling

Format:	Lyophilized
Reconstitution:	Centrifuge the tube before opening. Reconstituting to a concentration more than 100 µg/mL is recommended. Dissolve the lyophilized protein in distilled water.
Buffer:	Lyophilized from 0.22µm filtered solution in 20 mM Tris, 0.3M NaCl (pH 8.5). Normally 8 % trehalose is added as protectant before lyophilization.
Storage:	-20 °C, -80 °C
Storage Comment:	-20 to -80°C for 12 months as supplied from date of receipt., -80°C for 3-6 months after reconstitution., 2-8°C for 2-7 days after reconstitution., Recommend to aliquot the protein into smaller quantities for optimal storage. Please minimize freeze-thaw cycles.
Expiry Date:	12 months



SDS-PAGE

Image 1. Human CCL5 on Tris-Bis PAGE under reduced condition. The purity is greater than 95 % .



ELISA

Image 2. Immobilized Human CCL5, His Tag at 0.5 µg/mL (100 µL/Well) on the plate. Dose response curve for Anti-CCL5 Antibody, hFc Tag with the EC50 of 8 ng/mL determined by ELISA.