



[Go to Product page](#)

Datasheet for ABIN7274043
CCL8 Protein (AA 24-99)

1 Image

Overview

Quantity:	100 µg
Target:	CCL8
Protein Characteristics:	AA 24-99
Origin:	Human
Source:	Escherichia coli (E. coli)
Protein Type:	Recombinant

Product Details

Purpose:	Human CCL8 Protein
Sequence:	Gln24-Pro99
Characteristics:	Recombinant Human CCL8 Protein is expressed from E.coli without tag.It contains Gln24-Pro99.
Purity:	> 95 % as determined by Tris-Bis PAGE
Sterility:	0.22 µm filtered
Endotoxin Level:	Less than 1EU per µg by the LAL method.

Target Details

Target:	CCL8
Alternative Name:	CCL8 (CCL8 Products)
Background:	C-C motif Chemokine ligand 8 (CCL8) has been found in diseases' pathogenesis. Exogenous

Target Details

CCL8 enhanced the proliferative and migration potential of LE cells and their motility in the environment with its stable concentration. of all the examined factors, chemokine CCL8 participates in the establishment of a proper environment for embryo implantation.

Molecular Weight: 8.91 kDa. The protein migrates to 12-14 kDa based on Tris-Bis PAGE result.

UniProt: [P80075](#)

Application Details

Restrictions: For Research Use only

Handling

Format: Lyophilized

Reconstitution: Centrifuge the tube before opening. Reconstituting to a concentration more than 100 µg/mL is recommended. Dissolve the lyophilized protein in distilled water.

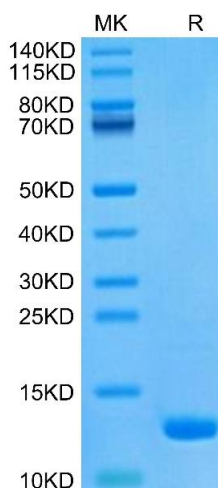
Buffer: Lyophilized from 0.22µm filtered solution in PBS (pH 7.4). Normally 8 % trehalose is added as protectant before lyophilization.

Storage: -20 °C,-80 °C

Storage Comment: -20 to -80°C for 12 months as supplied from date of receipt.,-80°C for 3-6 months after reconstitution.,-2-8°C for 2-7 days after reconstitution.,Recommend to aliquot the protein into smaller quantities for optimal storage. Please minimize freeze-thaw cycles.

Expiry Date: 12 months

Images



SDS-PAGE

Image 1. Human CCL8 on Tris-Bis PAGE under reduced condition. The purity is greater than 95 % .