



[Go to Product page](#)

Datasheet for ABIN7274046

CCL5 Protein (AA 24-91) (His-Avi Tag,Biotin)

2 Images

Overview

| | |
|-------------------------------|--|
| Quantity: | 100 µg |
| Target: | CCL5 |
| Protein Characteristics: | AA 24-91 |
| Origin: | Human |
| Source: | Escherichia coli (E. coli) |
| Protein Type: | Recombinant |
| Purification tag / Conjugate: | This CCL5 protein is labelled with His-Avi Tag,Biotin. |

Product Details

| | |
|------------------------------|---|
| Purpose: | Biotinylated Human CCL5 Protein |
| Sequence: | Ser24-Ser91 |
| Characteristics: | Recombinant Biotinylated Human CCL5 Protein is expressed from E.coli with His tag and Avi tag at the N-Terminus.It contains Ser24-Ser91. |
| Purity: | > 95 % as determined by Tris-Bis PAGE |
| Sterility: | 0.22 µm filtered |
| Endotoxin Level: | Less than 1EU per µg by the LAL method. |
| Biological Activity Comment: | Immobilized Anti-CCL5 Antibody, hFc Tag at 1µg/ml (100µl/well) on the plate. Dose response curve for Biotinylated Human CCL5, His Tag with the EC50 of 18.1ng/ml determined by ELISA. See testing image for detail. |

Target Details

| | |
|-------------------|---|
| Target: | CCL5 |
| Alternative Name: | CCL5 (CCL5 Products) |
| Background: | The CCR5 and the CCL5 ligand have been detected in some hematological malignancies, lymphomas, and a great number of solid tumors, but extensive studies on the role of the CCL5/CCR axis were performed only in a limited number of cancers. |
| Molecular Weight: | 10.89 kDa same as Tris-Bis PAGE result. |
| UniProt: | P13501 |
| Pathways: | Cellular Response to Molecule of Bacterial Origin , Regulation of G-Protein Coupled Receptor Protein Signaling , Smooth Muscle Cell Migration |

Application Details

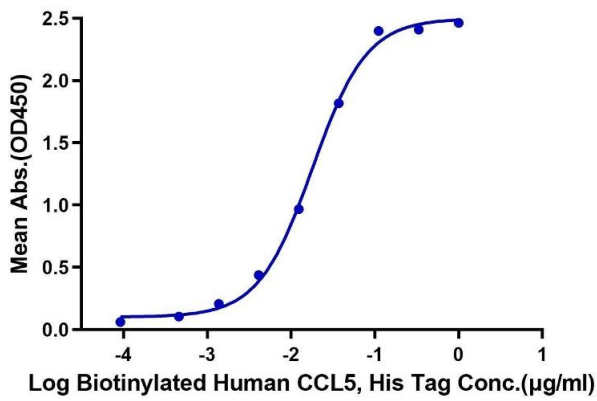
| | |
|---------------|-----------------------|
| Restrictions: | For Research Use only |
|---------------|-----------------------|

Handling

| | |
|------------------|--|
| Format: | Lyophilized |
| Reconstitution: | Centrifuge the tube before opening. Reconstituting to a concentration more than 100 µg/mL is recommended. Dissolve the lyophilized protein in distilled water. |
| Buffer: | Lyophilized from 0.22µm filtered solution in PBS, 0.3 % SKL (pH 7.4). Normally 8 % trehalose is added as protectant before lyophilization. |
| Storage: | -20 °C,-80 °C |
| Storage Comment: | -20 to -80°C for 12 months as supplied from date of receipt.,-80°C for 3-6 months after reconstitution.,2-8°C for 2-7 days after reconstitution.,Recommend to aliquot the protein into smaller quantities for optimal storage. Please minimize freeze-thaw cycles. |
| Expiry Date: | 12 months |

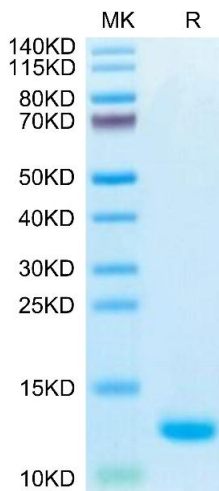
Biotinylated Human CCL5, His Tag ELISA

0.1 µg Anti-CCL5 Antibody, hFc Tag Per Well



ELISA

Image 1. Immobilized Anti-CCL5 Antibody, hFc Tag at 1 µg/mL (100 µL/well) on the plate. Dose response curve for Biotinylated Human CCL5, His Tag with the EC50 of 18.1 ng/mL determined by ELISA.



SDS-PAGE

Image 2. Biotinylated Human CCL5 on Tris-Bis PAGE under reduced condition. The purity is greater than 95 % .