



[Go to Product page](#)

Datasheet for ABIN7274054

CCR8 Protein (AA 1-35) (mFc Tag)

3 Images

Overview

Quantity:	100 µg
Target:	CCR8
Protein Characteristics:	AA 1-35
Origin:	Human
Source:	HEK-293 Cells
Protein Type:	Recombinant
Purification tag / Conjugate:	This CCR8 protein is labelled with mFc Tag.

Product Details

Purpose:	Human CCR8 Protein
Sequence:	Met1-Lys35
Characteristics:	Recombinant Human CCR8 Protein is expressed from HEK293 with mFc (IgG1) tag at the C-Terminus. It contains Met1-Lys35.
Purity:	> 95 % as determined by Tris-Bis PAGE, > 95 % as determined by HPLC
Sterility:	0.22 µm filtered
Endotoxin Level:	Less than 1EU per µg by the LAL method.
Biological Activity Comment:	Immobilized Human CCR8, mFc Tag at 0.5µg/ml (100µl/well) on the plate. Dose response curve for Anti-CCR8 Antibody, hFc Tag with the EC50 of 7.4ng/ml determined by ELISA. See testing image for detail.

Target Details

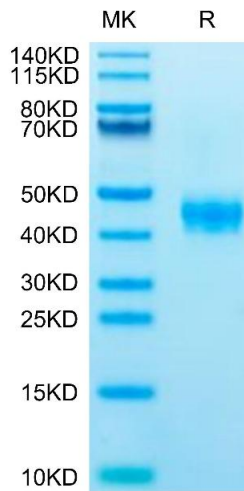
Target:	CCR8
Alternative Name:	CCR8 (CCR8 Products)
Background:	CC chemokine receptor (CCR) 8 (previously called CKR-L1 or TER1 and designated CD198), which is expressed on Th2 cells and eosinophils, has been implicated in allergic diseases. CCR8 may regulate monocyte chemotaxis and thymic cell line apoptosis and is alternative coreceptor with CD4 for HIV-1 infection.
Molecular Weight:	30.25 kDa. Due to glycosylation, the protein migrates to 40-50 kDa based on Tris-Bis PAGE result.

Application Details

Restrictions:	For Research Use only
---------------	-----------------------

Handling

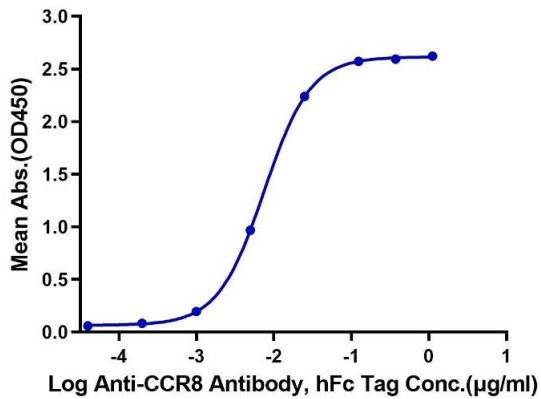
Format:	Lyophilized
Reconstitution:	Centrifuge the tube before opening. Reconstituting to a concentration more than 100 µg/mL is recommended. Dissolve the lyophilized protein in distilled water.
Buffer:	Lyophilized from 0.22µm filtered solution in PBS (pH 7.4). Normally 8 % trehalose is added as protectant before lyophilization.
Storage:	-20 °C,-80 °C
Storage Comment:	-20 to -80°C for 12 months as supplied from date of receipt.,-80°C for 3-6 months after reconstitution.,2-8°C for 2-7 days after reconstitution.,Recommend to aliquot the protein into smaller quantities for optimal storage. Please minimize freeze-thaw cycles.
Expiry Date:	12 months



SDS-PAGE

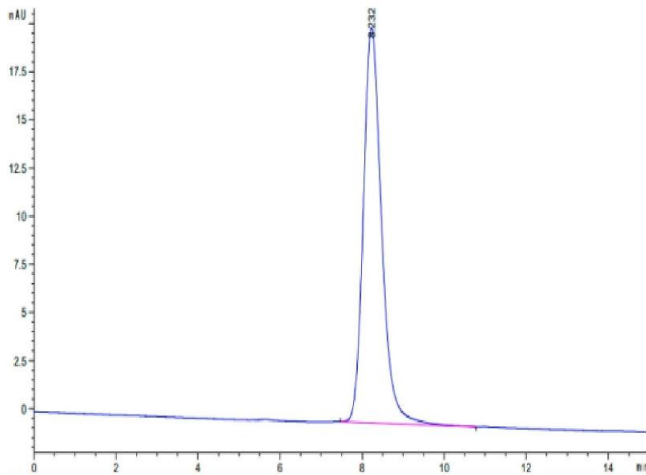
Image 1. Human CCR8 on Tris-Bis PAGE under reduced condition. The purity is greater than 95 % .

Human CCR8, mFc Tag ELISA
0.05µg Human CCR8, mFc Tag Per Well



ELISA

Image 2. Immobilized Human CCR8, mFc Tag at 0.5 µg/mL (100 µL/well) on the plate. Dose response curve for Anti-CCR8 Antibody, hFc Tag with the EC50 of 7.4 ng/mL determined by ELISA.



Size-exclusion chromatography-High Pressure Liquid Chromatography

Image 3. The purity of Human CCR8 is greater than 95 % as determined by SEC-HPLC.