

Datasheet for ABIN7274061

CD161 Protein (AA 67-227) (His-Avi Tag)**4** Images[Go to Product page](#)

Overview

| | |
|-------------------------------|--|
| Quantity: | 100 µg |
| Target: | CD161 (KLRB1) |
| Protein Characteristics: | AA 67-227 |
| Origin: | Cynomolgus |
| Source: | HEK-293 Cells |
| Protein Type: | Recombinant |
| Purification tag / Conjugate: | This CD161 protein is labelled with His-Avi Tag. |

Product Details

| | |
|------------------------------|---|
| Purpose: | Cynomolgus CD161 Protein |
| Sequence: | Gln67-Leu227 |
| Characteristics: | Recombinant Cynomolgus CD161 Protein is expressed from HEK293 with His tag and Avi tag at the C-Terminus. It contains Gln67-Leu227. |
| Purity: | > 95 % as determined by Tris-Bis PAGE, > 95 % as determined by HPLC |
| Sterility: | 0.22 µm filtered |
| Endotoxin Level: | Less than 1EU per µg by the LAL method. |
| Biological Activity Comment: | Immobilized Cynomolgus CD161, His Tag at 2µg/ml (100µl/Well) on the plate. Dose response curve for Anti-CD161 Antibody, hFc Tag with the EC50 of 0.16µg/ml determined by ELISA. See testing image for detail. |

Target Details

| | |
|-------------------|--|
| Target: | CD161 (KLRB1) |
| Alternative Name: | CD161 (KLRB1 Products) |
| Background: | CD161 (NKR1P1) is a lectin-like receptor present on NK cells and rare T-cell subsets. We have observed CD161 expression in some cases of T-cell prolymphocytic leukemia (T-PLL) and found it to be useful in follow-up and detection of disease after treatment. |
| Molecular Weight: | 21.5 kDa. Due to glycosylation, the protein migrates to 37-42 kDa based on Tris-Bis PAGE result. |
| NCBI Accession: | XP_005570142 |

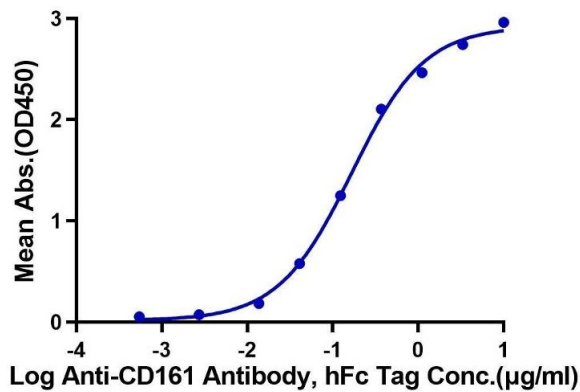
Application Details

| | |
|---------------|-----------------------|
| Restrictions: | For Research Use only |
|---------------|-----------------------|

Handling

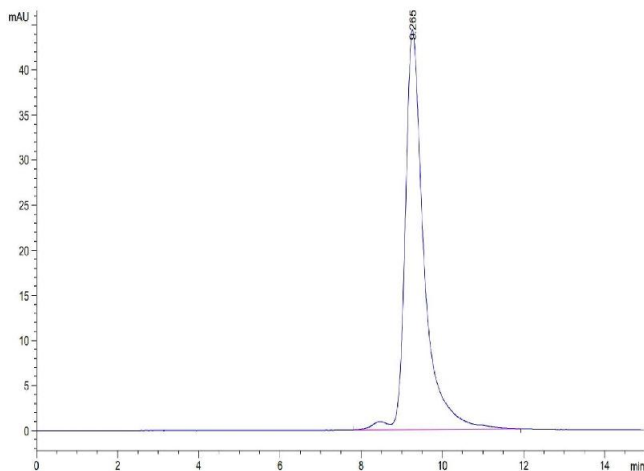
| | |
|------------------|---|
| Format: | Lyophilized |
| Reconstitution: | Centrifuge the tube before opening. Reconstituting to a concentration more than 100 µg/mL is recommended. Dissolve the lyophilized protein in distilled water. |
| Buffer: | Lyophilized from 0.22µm filtered solution in PBS (pH 7.4). Normally 8 % trehalose is added as protectant before lyophilization. |
| Storage: | -20 °C,-80 °C |
| Storage Comment: | -20 to -80°C for 12 months as supplied from date of receipt., -80°C for 3-6 months after reconstitution., 2-8°C for 2-7 days after reconstitution., Recommend to aliquot the protein into smaller quantities for optimal storage. Please minimize freeze-thaw cycles. |
| Expiry Date: | 12 months |

Cynomolgus CD161, His Tag ELISA
0.2µg Cynomolgus CD161, His Tag Per Well



ELISA

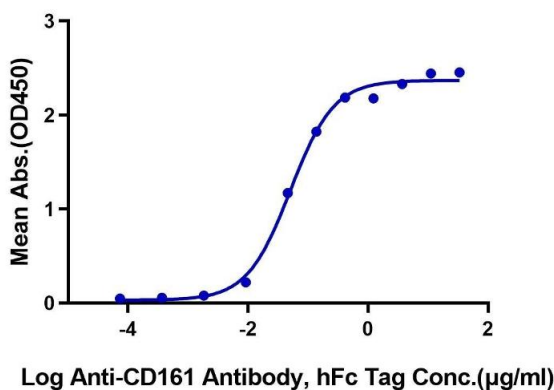
Image 1. Immobilized Cynomolgus CD161, His Tag at 2 µg/mL (100 µL/Well) on the plate. Dose response curve for Anti-CD161 Antibody, hFc Tag with the EC50 of 0.16 µg/mL determined by ELISA.



Size-exclusion chromatography-High Pressure Liquid Chromatography

Image 2. The purity of Cynomolgus CD161 is greater than 95 % as determined by SEC-HPLC.

Cynomolgus CD161, His Tag ELISA
0.2µg Cynomolgus CD161, His Tag Per Well



ELISA

Image 3. Immobilized Cynomolgus CD161, His Tag at 2 µg/mL (100 µL/Well) on the plate. Dose response curve for Anti-CD161 Antibody, hFc Tag with the EC50 of 50.7 ng/mL determined by ELISA.

Please check the [product details page](#) for more images. Overall 4 images are available for ABIN7274061.