



[Go to Product page](#)

Datasheet for ABIN7274074

## CD161 Protein (AA 67-225) (Fc Tag)

### 3 Images

#### Overview

Quantity:	100 µg
Target:	CD161 (KLRB1)
Protein Characteristics:	AA 67-225
Origin:	Human
Source:	HEK-293 Cells
Protein Type:	Recombinant
Purification tag / Conjugate:	This CD161 protein is labelled with Fc Tag.

#### Product Details

Purpose:	Human CD161 Protein
Sequence:	Gln67-Ser225
Characteristics:	Recombinant Human CD161 Protein is expressed from HEK293 with hFc tag at the C-Terminus. It contains Gln67-Ser225.
Purity:	> 95 % as determined by Tris-Bis PAGE, > 95 % as determined by HPLC
Sterility:	0.22 µm filtered
Endotoxin Level:	Less than 1EU per µg by the LAL method.
Biological Activity Comment:	Immobilized Human CD161, hFc Tag at 0.5µg/ml (100µl/Well) on the plate. Dose response curve for Biotinylated Anti-CD161 Antibody, hFc Tag with the EC50 of 23.0ng/ml determined by ELISA. See testing image for detail.

## Target Details

---

Target:	CD161 (KLRB1)
Alternative Name:	CD161 ( <a href="#">KLRB1 Products</a> )
Background:	CD161 (NKR1P1) is a lectin-like receptor present on NK cells and rare T-cell subsets. We have observed CD161 expression in some cases of T-cell prolymphocytic leukemia (T-PLL) and found it to be useful in follow-up and detection of disease after treatment.
Molecular Weight:	45.2 kDa. Due to glycosylation, the protein migrates to 65-68 kDa based on Tris-Bis PAGE result.

## Application Details

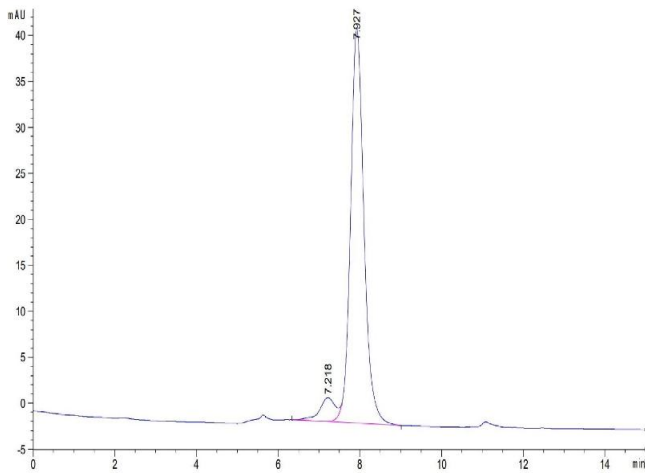
---

Restrictions:	For Research Use only
---------------	-----------------------

## Handling

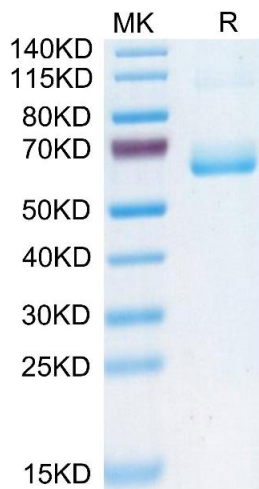
---

Format:	Lyophilized
Reconstitution:	Centrifuge the tube before opening. Reconstituting to a concentration more than 100 µg/mL is recommended. Dissolve the lyophilized protein in distilled water.
Buffer:	Lyophilized from 0.22µm filtered solution in PBS ( pH 7.4). Normally 8 % trehalose is added as protectant before lyophilization.
Storage:	-20 °C,-80 °C
Storage Comment:	-20 to -80°C for 12 months as supplied from date of receipt., -80°C for 3-6 months after reconstitution., 2-8°C for 2-7 days after reconstitution., Recommend to aliquot the protein into smaller quantities for optimal storage. Please minimize freeze-thaw cycles.
Expiry Date:	12 months



### Size-exclusion chromatography-High Pressure Liquid Chromatography

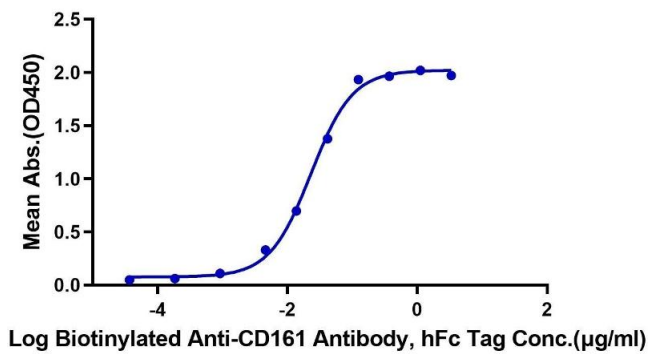
**Image 1.** The purity of Human CD161 is greater than 93 % as determined by SEC-HPLC.



### SDS-PAGE

**Image 2.** Human CD161 on Tris-Bis PAGE under reduced condition. The purity is greater than 95 % .

**Human CD161, hFc Tag ELISA**  
0.05µg Human CD161, hFc Tag Per Well



### ELISA

**Image 3.** Immobilized Human CD161, hFc Tag at 0.5 µg/mL (100 µL/Well) on the plate. Dose response curve for Biotinylated Anti-CD161 Antibody, hFc Tag with the EC50 of 23.0 ng/mL determined by ELISA.