

Datasheet for ABIN7274103

**CD20 Protein (AA 141-188) (His-Avi Tag,Biotin)****3** Images[Go to Product page](#)

## Overview

Quantity:	100 µg
Target:	CD20 (MS4A1)
Protein Characteristics:	AA 141-188
Origin:	Human
Source:	Escherichia coli (E. coli)
Protein Type:	Recombinant
Purification tag / Conjugate:	This CD20 protein is labelled with His-Avi Tag,Biotin.

## Product Details

Purpose:	Biotinylated Human CD20/MS4A1 Protein
Sequence:	Ile141-Ser188
Characteristics:	Recombinant Biotinylated Human CD20/MS4A1 Protein is expressed from E.coli with His tag and Avi tag at the C-Terminus.It contains Ile141-Ser188.
Purity:	> 95 % as determined by Tris-Bis PAGE
Sterility:	0.22 µm filtered
Endotoxin Level:	Less than 1EU per µg by the LAL method.
Biological Activity Comment:	Immobilized Biotinylated Human CD20, His Tag at 1µg/ml (100µl/well) on the streptavidin precoated plate (5µg/ml). Dose response curve for Anti-CD20 Antibody, hFc Tag with the EC50 of 87.3ng/ml determined by ELISA. See testing image for detail.

Target Details

Target:	CD20 (MS4A1)
Alternative Name:	CD20 ( <a href="#">MS4A1 Products</a> )
Background:	B-lymphocyte antigen CD20 or CD20 is an activated-glycosylated phosphoprotein expressed on the surface of all B-cells beginning at the pro-B phase (CD45R , CD117) and progressively increasing in concentration until maturity.CD20 is the target of the monoclonal antibodies rituximab, ocrelizumab, obinutuzumab, ofatumumab, ibritumomab tiuxetan, tositumomab, and ublituximab, which are all active agents in the treatment of all B cell lymphomas, leukemias, and B cell-mediated autoimmune diseases.
Molecular Weight:	16.8 kDa same as Tris-Bis PAGE result.

Application Details

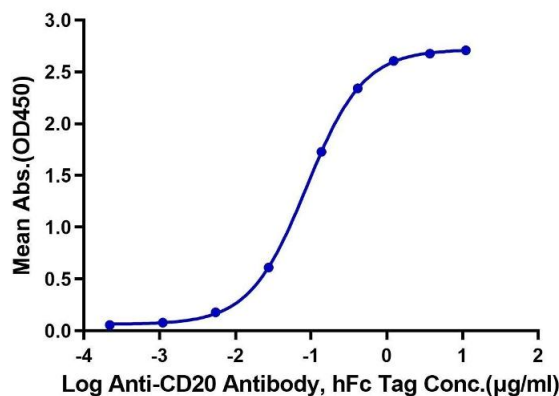
Restrictions:	For Research Use only
---------------	-----------------------

Handling

Format:	Liquid
Buffer:	Supplied as 0.22µm filtered solution in 20 mM PB, 10 % Glycerol ( pH 7.0).
Storage:	-80 °C
Storage Comment:	Valid for 12 months from date of receipt when stored at -80°C., Recommend to aliquot the protein into smaller quantities for optimal storage. Please minimize freeze-thaw cycles.
Expiry Date:	12 months

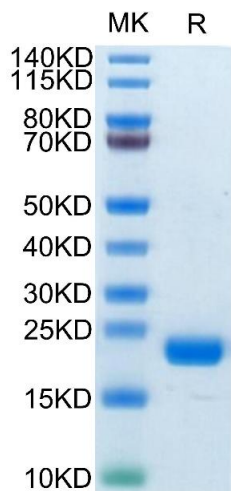
Images

**Biotinylated Human CD20, His Tag ELISA**  
0.1µg Biotinylated Human CD20, His Tag Per Well

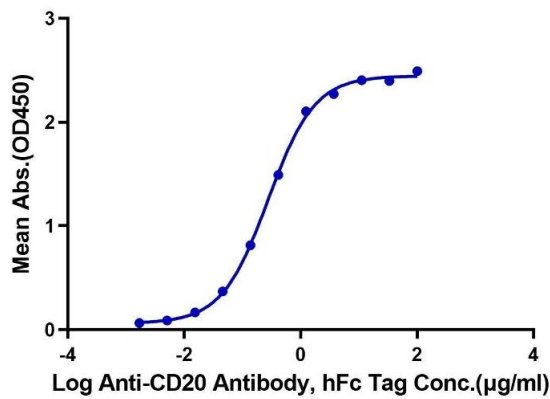


ELISA

**Image 1.** Immobilized Biotinylated Human CD20, His Tag at 1 µg/mL (100 µL/well) on the streptavidin precoated plate (5 µg/mL). Dose response curve for Anti-CD20 Antibody, hFc Tag with the EC50 of 87.3 ng/mL determined by ELISA.



**Biotinylated Human CD20, His Tag ELISA**  
0.5µg Biotinylated Human CD20, His Tag Per Well



**SDS-PAGE**

**Image 2.** Biotinylated Human CD20 on Tris-Bis PAGE under reduced condition. The purity is greater than 95 % .

**ELISA**

**Image 3.** Immobilized Biotinylated Human CD20 at 5 µg/mL (100 µL/Well) on the plate. Dose response curve for Anti-CD20 Antibody, hFc Tag with the EC50 of 0.27 µg/mL determined by ELISA.