

Datasheet for ABIN7274134

CD3 epsilon Protein (CD3E) (AA 22-48) (Fc-Avi Tag)



[Go to Product page](#)

3 Images

Overview

Quantity:	100 µg
Target:	CD3 epsilon (CD3E)
Protein Characteristics:	AA 22-48
Origin:	Cynomolgus
Source:	HEK-293 Cells
Protein Type:	Recombinant
Purification tag / Conjugate:	This CD3 epsilon protein is labelled with Fc-Avi Tag.

Product Details

Purpose:	Cynomolgus CD3E/CD3 epsilon 1-27 peptide Protein
Sequence:	Asp22-Thr48
Characteristics:	Recombinant Cynomolgus CD3E/CD3 epsilon 1-27 peptide Protein is expressed from HEK293 with hFc tag and Avi tag at the C-Terminus.It contains Asp22-Thr48.
Purity:	> 95 % as determined by Tris-Bis PAGE,> 95 % as determined by HPLC
Sterility:	0.22 µm filtered
Endotoxin Level:	Less than 1EU per µg by the LAL method.
Biological Activity Comment:	Immobilized Cynomolgus CD3E 1-27 peptide, His Tag at 2µg/ml (100µl/Well) on the plate. Dose response curve for Biotinylated Anti-CD3 Antibody, hFc Tag with the EC50 of 37.2ng/ml determined by ELISA. See testing image for detail.

Target Details

Target:	CD3 epsilon (CD3E)
Alternative Name:	CD3E (CD3E Products)
Background:	CD3E, is a single-pass type I membrane protein. CD3 (cluster of differentiation 3) T cell co-receptor helps to activate both the cytotoxic T cell (CD8 naive T cells) and also T helper cells (CD4 naive T cells). It consists of a protein complex and is composed of four distinct chains. In mammals, the complex contains a CD3 γ chain, a CD3 δ chain, and two CD3 ϵ chains.
Molecular Weight:	31.3 kDa. Due to glycosylation, the protein migrates to 40-50 kDa based on Tris-Bis PAGE result.
UniProt:	Q95LI5
Pathways:	TCR Signaling , CXCR4-mediated Signaling Events , Ubiquitin Proteasome Pathway

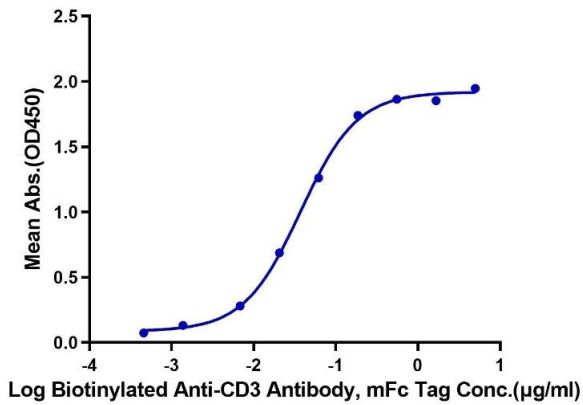
Application Details

Restrictions:	For Research Use only
---------------	-----------------------

Handling

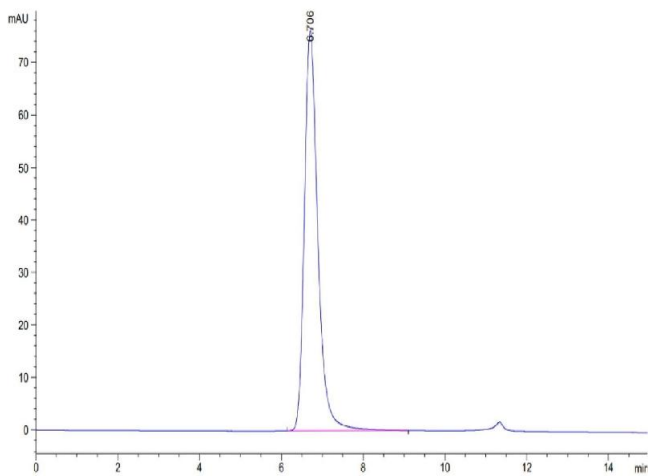
Format:	Lyophilized
Reconstitution:	Centrifuge the tube before opening. Reconstituting to a concentration more than 100 $\mu\text{g}/\text{mL}$ is recommended. Dissolve the lyophilized protein in distilled water.
Buffer:	Lyophilized from 0.22 μm filtered solution in PBS (pH 7.4). Normally 8 % trehalose is added as protectant before lyophilization.
Storage:	-20 $^{\circ}\text{C}$, -80 $^{\circ}\text{C}$
Storage Comment:	-20 to -80 $^{\circ}\text{C}$ for 12 months as supplied from date of receipt., -80 $^{\circ}\text{C}$ for 3-6 months after reconstitution., 2-8 $^{\circ}\text{C}$ for 2-7 days after reconstitution., Recommend to aliquot the protein into smaller quantities for optimal storage. Please minimize freeze-thaw cycles.
Expiry Date:	12 months

Cynomolgus CD3E 1-27 peptide, hFc Tag ELISA
0.2µg Cynomolgus CD3E 1-27 peptide, hFc Tag Per Well



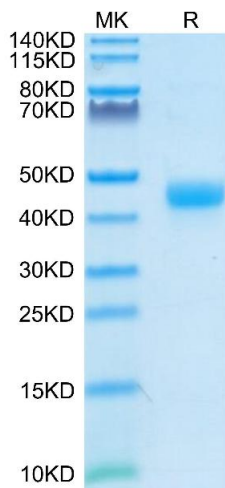
ELISA

Image 1. Immobilized Cynomolgus CD3E 1-27, His Tag at 2 µg/mL (100 µL/Well) on the plate. Dose response curve for Biotinylated Anti-CD3 Antibody, hFc Tag with the EC50 of 37.2 ng/mL determined by ELISA.



Size-exclusion chromatography-High Pressure Liquid Chromatography

Image 2. The purity of Cynomolgus CD3E/CD3 epsilon 1-27 is greater than 95 % as determined by SEC-HPLC.



SDS-PAGE

Image 3. Cynomolgus CD3E/CD3 epsilon 1-27 on Tris-Bis PAGE under reduced condition. The purity is greater than 95 %.