

Datasheet for ABIN7274136  
**CD3D & CD3E protein (His tag)**



[Go to Product page](#)

5 Images

## Overview

Quantity:	100 µg
Target:	CD3D & CD3E
Origin:	Human
Source:	HEK-293 Cells
Protein Type:	Recombinant
Purification tag / Conjugate:	His tag

## Product Details

Sequence:	Asp23-Glu120(CD3E) & Phe22-Ala105(CD3D)
Purity:	> 95% as determined by Tris-Bis PAGE, > 95% as determined by HPLC
Sterility:	0.22 µm filtered
Endotoxin Level:	Less than 1EU per µg by the LAL method.
Biological Activity Comment:	Immobilized Human CD3E&CD3D at 2µg/ml (100µl/Well) on the plate. Dose response curve for OKT3, mFc Tag with the EC50 of 38ng/ml determined by ELISA. The affinity constant of 0.36nM as determined in SPR assay (Biacore T200). See testing image for detail.

## Target Details

Target:	CD3D & CD3E
Alternative Name:	CD3E&CD3D
Background:	CD3, CD3e, CD3E, CD3d, T3D, CD3D, CD3E&CD3D, CD3 delta&CD3 epsilon, T-cell surface glycoprotein CD3 epsilon & CD3 delta chain, also known as CD3E & CD3D, are single-pass type

## Target Details

---

I membrane proteins. When antigen presenting cells (APCs) activate T-cell receptor (TCR), TCR-mediated signals are transmitted across the cell membrane by the CD3 chains CD3D, CD3E, CD3G and CD3Z. All CD3 chains contain immunoreceptor tyrosine-based activation motifs (ITAMs) in their cytoplasmic domain.

**Molecular Weight:** 17.9 kDa (CD3E) and 16.7 kDa (CD3D). Due to glycosylation, the protein migrates to 35-42 kDa and 25 kDa based on Tris-Bis PAGE result.

## Application Details

---

**Restrictions:** For Research Use only

## Handling

---

**Format:** Lyophilized

**Reconstitution:** Centrifuge tubes before opening. Reconstituting to a concentration more than 100 µg/mL is recommended (usually we use 1 mg/mL solution for lyophilization). Dissolve the lyophilized protein in distilled water.

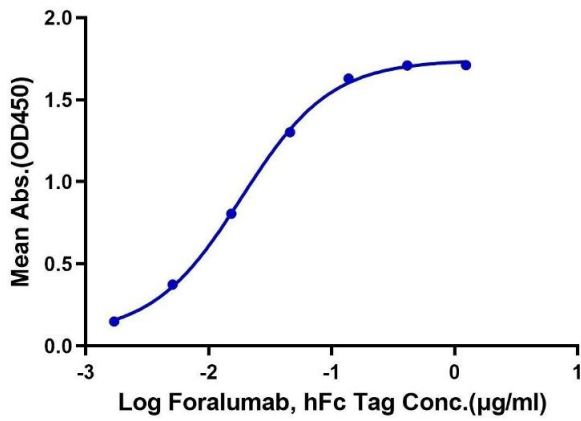
**Buffer:** Lyophilized from 0.22µm filtered solution in PBS (pH 7.4). Normally 5 % trehalose is added as protectant before lyophilization.

**Storage:** 4 °C, -80 °C

**Storage Comment:** Reconstituted protein stable at -80°C for 12 months, 4°C for 1 week. Use a manual defrost freezer and avoid repeated freeze-thaw cycles.

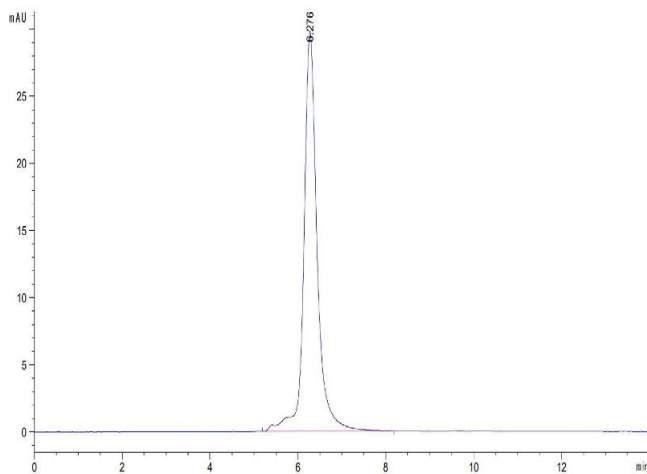
**Expiry Date:** 12 months

**Human CD3E&CD3D, His Tag ELISA**  
0.2µg Human CD3E&CD3D, His Tag Per Well



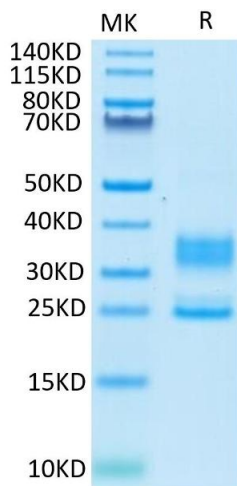
**ELISA**

**Image 1.** Immobilized Human CD3E&CD3D at 2 µg/mL (100 µL/Well). Dose response curve for Foralumab, hFc Tag with the EC50 of 18.5 ng/mL determined by ELISA.



**Size-exclusion chromatography-High Pressure Liquid Chromatography**

**Image 2.** The purity of Human CD3E&CD3D was greater than 95 % as determined by SEC-HPLC.



**SDS-PAGE**

**Image 3.** Human CD3E&CD3D on Tris-Bis PAGE under reduced condition. The purity is greater than 95 % .

Please check the [product details page](#) for more images. Overall 5 images are available for ABIN7274136.