

Datasheet for ABIN7274144

**CD3E & CD3G protein (His tag)****8** Images[Go to Product page](#)

## Overview

Quantity:	100 µg
Target:	CD3E & CD3G
Origin:	Human
Source:	HEK-293 Cells
Protein Type:	Recombinant
Purification tag / Conjugate:	His tag

## Product Details

Sequence:	Asp23-Glu120(CD3E) & Gln23-Gln106(CD3G)
Purity:	> 95% as determined by Tris-Bis PAGE, > 95% as determined by HPLC
Sterility:	0.22 µm filtered
Endotoxin Level:	Less than 1EU per µg by the LAL method.
Biological Activity Comment:	Immobilized Human CD3E&CD3G, His Tag at 2µg/ml (100µl/Well) on the plate. Dose response curve for OKT3, mFc Tag with the EC50 of 42.0ng/ml determined by ELISA. The affinity constant of 0.22nM as determined in SPR assay (Biacore T200). See testing image for detail.

## Target Details

Target:	CD3E & CD3G
Alternative Name:	CD3E&CD3G
Background:	CD3, CD3G, CD3g, T3G, CD3e, CD3E, CD3 epsilon&CD3 gamma, CD3E&CD3G, T-cell surface glycoprotein CD3 epsilon & CD3 gamma chain, also known as CD3E & CD3G, are single-pass

## Target Details

---

type I membrane proteins. When antigen presenting cells (APCs) activate T-cell receptor (TCR), TCR-mediated signals are transmitted across the cell membrane by the CD3 chains CD3D, CD3E, CD3G and CD3Z. All CD3 chains contain immunoreceptor tyrosine-based activation motifs (ITAMs) in their cytoplasmic domain.

**Molecular Weight:** 17.9 kDa (CD3E) and 17.9 kDa (CD3G). Due to glycosylation, the protein migrates to 25-40 kDa based on Tris-Bis PAGE result.

## Application Details

---

**Restrictions:** For Research Use only

## Handling

---

**Format:** Lyophilized

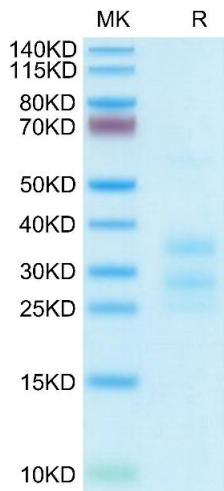
**Reconstitution:** Centrifuge tubes before opening. Reconstituting to a concentration more than 100 µg/mL is recommended (usually we use 1 mg/mL solution for lyophilization). Dissolve the lyophilized protein in distilled water.

**Buffer:** Lyophilized from 0.22µm filtered solution in PBS (pH 7.4). Normally 5 % trehalose is added as protectant before lyophilization.

**Storage:** 4 °C, -80 °C

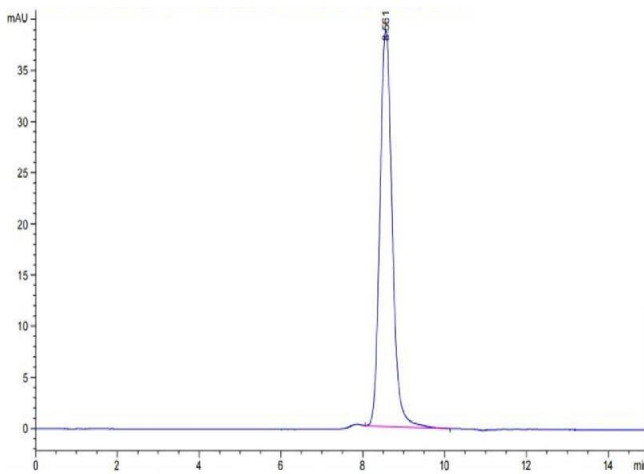
**Storage Comment:** Reconstituted protein stable at -80°C for 12 months, 4°C for 1 week. Use a manual defrost freezer and avoid repeated freeze-thaw cycles.

**Expiry Date:** 12 months



### SDS-PAGE

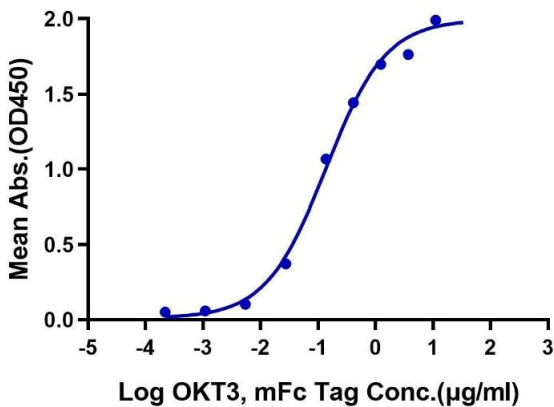
**Image 1.** Human CD3E&CD3G on Tris-Bis PAGE under reduced condition. The purity is greater than 95 % .



### Size-exclusion chromatography-High Pressure Liquid Chromatography

**Image 2.** The purity of Human CD3E&CD3G is greater than 95 % as determined by SEC-HPLC.

**Human CD3E&CD3G, His Tag ELISA**  
0.2µg Human CD3E&CD3G, His Tag Per Well



### ELISA

**Image 3.** Immobilized Human CD3E&CD3G at 2 µg/mL (100 µL/Well) on the plate. Dose response curve for OKT3, mFc Tag with the EC50 of 0.13 µg/mL determined by ELISA.

Please check the [product details page](#) for more images. Overall 8 images are available for ABIN7274144.