

Datasheet for ABIN7274154

CD3 epsilon Protein (CD3E) (AA 23-48) (Fc-Avi Tag,Biotin)[Go to Product page](#)**3** Images

Overview

Quantity:	100 µg
Target:	CD3 epsilon (CD3E)
Protein Characteristics:	AA 23-48
Origin:	Human
Source:	HEK-293 Cells
Protein Type:	Recombinant
Purification tag / Conjugate:	This CD3 epsilon protein is labelled with Fc-Avi Tag,Biotin.

Product Details

Purpose:	Biotinylated Human CD3E/CD3 epsilon 1-27 peptide Protein
Sequence:	Asp23-Thr48
Characteristics:	Recombinant Biotinylated Human CD3E/CD3 epsilon 1-27 peptide Protein is expressed from HEK293 with hFc tag and Avi Tag at the C-Terminus.It contains Asp23-Thr48.
Purity:	> 95 % as determined by Tris-Bis PAGE,> 95 % as determined by HPLC
Sterility:	0.22 µm filtered
Endotoxin Level:	Less than 1EU per µg by the LAL method.
Biological Activity Comment:	Immobilized Anti-CD3 Antibody, mFc Tag at 1µg/ml (100µl/well) on the plate. Dose response curve for Biotinylated Human CD3E 1-27 peptide, hFc Tag with the EC50 of 5.9ng/ml determined by ELISA. See testing image for detail.

Target Details

Target:	CD3 epsilon (CD3E)
Alternative Name:	CD3E (CD3E Products)
Background:	CD3E, is a single-pass type I membrane protein.CD3 (cluster of differentiation 3) T cell co-receptor helps to activate both the cytotoxic T cell (CD8 naive T cells) and also T helper cells (CD4 naive T cells). It consists of a protein complex and is composed of four distinct chains. In mammals, the complex contains a CD3γ chain, a CD3δ chain, and two CD3ε chains.
Molecular Weight:	31.3 kDa. Due to glycosylation, the protein migrates to 40-50 kDa based on Tris-Bis PAGE result.
UniProt:	P07766
Pathways:	TCR Signaling , CXCR4-mediated Signaling Events , Ubiquitin Proteasome Pathway

Application Details

Restrictions:	For Research Use only
---------------	-----------------------

Handling

Format:	Lyophilized
Reconstitution:	Centrifuge the tube before opening. Reconstituting to a concentration more than 100 µg/mL is recommended. Dissolve the lyophilized protein in distilled water.
Buffer:	Lyophilized from 0.22µm filtered solution in PBS (pH 7.4). Normally 8 % trehalose is added as protectant before lyophilization.
Storage:	-20 °C,-80 °C
Storage Comment:	-20 to -80°C for 12 months as supplied from date of receipt.,-80°C for 3-6 months after reconstitution.,2-8°C for 2-7 days after reconstitution.,Recommend to aliquot the protein into smaller quantities for optimal storage. Please minimize freeze-thaw cycles.
Expiry Date:	12 months

Size-exclusion chromatography-High Pressure Liquid Chromatography

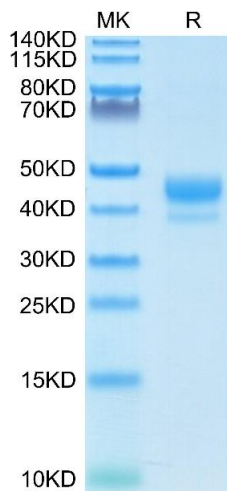
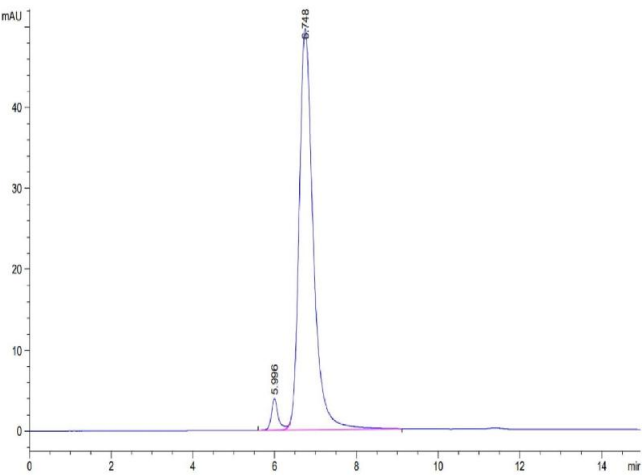
Image 1. The purity of Biotinylated Human CD3E 1-27 peptide is greater than 95 % as determined by SEC-HPLC.

SDS-PAGE

Image 2. Biotinylated Human CD3E 1-27 peptide on Tris-Bis PAGE under reduced condition. The purity is greater than 95 % .

ELISA

Image 3. Immobilized Anti-CD3 Antibody, mFc Tag at 1 µg/mL (100 µL/well) on the plate. Dose response curve for Biotinylated Human CD3E 1-27 peptide, hFc Tag with the EC50 of 6/5.9 ng/mL determined by ELISA.



Biotinylated Human CD3E 1-27 peptide, hFc Tag ELISA
0.1µg Anti-CD3E Antibody, mFc Tag Per Well

