

Datasheet for ABIN7274159

CD33 Protein (CD33) (AA 18-259) (His-Avi Tag)**4** Images[Go to Product page](#)

Overview

Quantity:	100 µg
Target:	CD33
Protein Characteristics:	AA 18-259
Origin:	Human
Source:	HEK-293 Cells
Protein Type:	Recombinant
Purification tag / Conjugate:	This CD33 protein is labelled with His-Avi Tag.

Product Details

Purpose:	Human Siglec-3/CD33 Protein
Sequence:	Asp18-His259
Characteristics:	Recombinant Human Siglec-3/CD33 Protein is expressed from HEK293 with His tag and Avi tag at the C-Terminus. It contains Asp18-His259.
Purity:	> 95 % as determined by Tris-Bis PAGE, > 95 % as determined by HPLC
Sterility:	0.22 µm filtered
Endotoxin Level:	Less than 1EU per µg by the LAL method.
Biological Activity Comment:	Immobilized Human Siglec-3, His Tag at 0.5µg/ml (100µl/Well) on the plate. Dose response curve for Anti-Siglec-3 Antibody, hFc Tag with the EC50 of 5.1ng/ml determined by ELISA. See testing image for detail.

Target Details

Target:	CD33
Alternative Name:	Siglec-3 (CD33 Products)
Background:	Sialic-acid-binding immunoglobulin-like lectin (Siglec) that plays a role in mediating cell-cell interactions and in maintaining immune cells in a resting state.They are sialoadhesin/CD169/Siglec-1, CD22/Siglec-2, CD33/Siglec-3, Myelin-Associated Glycoprotein (MAG/Siglec-4a) and Siglecs 5 to 11. To date, no Siglec has been shown to recognized any cell surface ligand other than sialic acids, suggesting that interactions with glycans containing this carbohydrate are important in mediating the biological functions of Siglecs.
Molecular Weight:	29.6 kDa. Due to glycosylation, the protein migrates to 52-60 kDa based on Tris-Bis PAGE result.

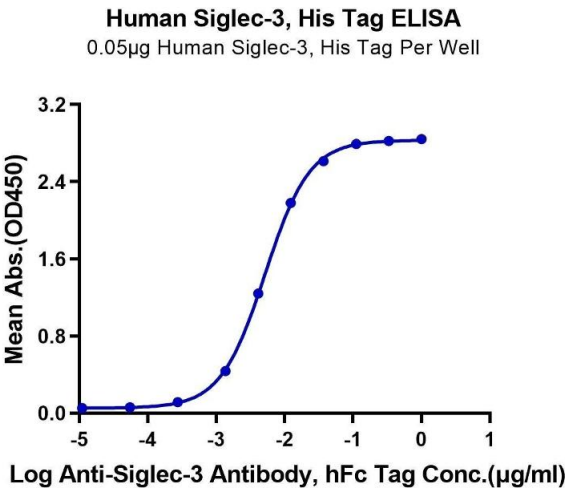
Application Details

Restrictions:	For Research Use only
---------------	-----------------------

Handling

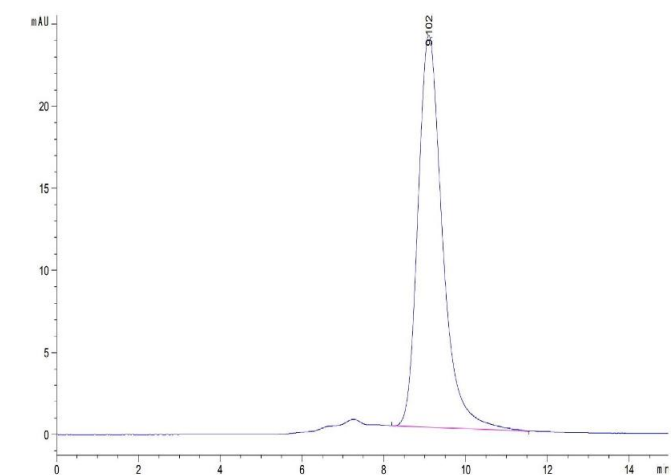
Format:	Liquid
Buffer:	Supplied as 0.22µm filtered solution in 20 mM PB, 500 mM NaCl (pH 8.0).
Storage:	-80 °C
Storage Comment:	Valid for 12 months from date of receipt when stored at -80°C., Recommend to aliquot the protein into smaller quantities for optimal storage. Please minimize freeze-thaw cycles.
Expiry Date:	12 months

Images



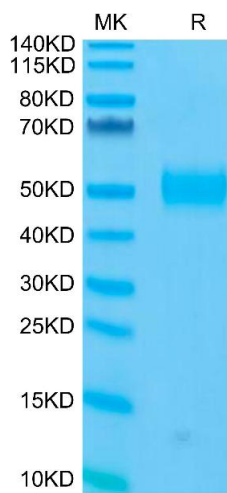
ELISA

Image 1. Immobilized Human Siglec-3, His Tag at 0.5 µg/mL (100 µL/Well) on the plate. Dose response curve for Anti-Siglec-3 Antibody, hFc Tag with the EC50 of 5.1 ng/mL determined by ELISA.



Size-exclusion chromatography-High Pressure Liquid Chromatography

Image 2. The purity of Human Siglec-3/CD33 is greater than 95 % as determined by SEC-HPLC.



SDS-PAGE

Image 3. Human Siglec-3/CD33 on Tris-Bis PAGE under reduced condition. The purity is greater than 95 % .

Please check the [product details page](#) for more images. Overall 4 images are available for ABIN7274159.