



[Go to Product page](#)

Datasheet for ABIN7274190

## CD4 Protein (CD4) (AA 26-390) (His tag)

### 3 Images

#### Overview

Quantity:	100 µg
Target:	CD4
Protein Characteristics:	AA 26-390
Origin:	Rhesus Monkey
Source:	HEK-293 Cells
Protein Type:	Recombinant
Purification tag / Conjugate:	This CD4 protein is labelled with His tag.

#### Product Details

Purpose:	Rhesus macaque CD4/LEU3 Protein
Sequence:	Lys26-Trp390
Characteristics:	Recombinant Rhesus macaque CD4/LEU3 Protein is expressed from HEK293 with His tag at the C-Terminus.It contains Lys26-Trp390.
Purity:	> 95 % as determined by Tris-Bis PAGE,> 95 % as determined by HPLC
Sterility:	0.22 µm filtered
Endotoxin Level:	Less than 1EU per µg by the LAL method.
Biological Activity Comment:	Immobilized Rhesus macaque CD4, His Tag at 1µg/ml (100µl/Well) on the plate. Dose response curve for Anti-CD4 Antibody, hFc Tag with the EC50 of 12ng/ml determined by ELISA. See testing image for detail.

## Target Details

---

Target:	CD4
Alternative Name:	CD4 ( <a href="#">CD4 Products</a> )
Background:	CD4, also known as L3T4, T4, and W3/25, is an approximately 55 kDa type I transmembrane glycoprotein that is expressed predominantly on thymocytes and a subset of mature T lymphocytes. It is a standard phenotype marker for the identification of T cell populations. Integral membrane glycoprotein that plays an essential role in the immune response and serves multiple functions in responses against both external and internal offenses. In T-cells, functions primarily as a coreceptor for MHC class II molecule:peptide complex.
Molecular Weight:	41.5 kDa. Due to glycosylation, the protein migrates to 45-52 kDa based on Tris-Bis PAGE result.
UniProt:	<a href="#">G7N5T8</a>
Pathways:	<a href="#">TCR Signaling</a> , <a href="#">Maintenance of Protein Location</a> , <a href="#">CXCR4-mediated Signaling Events</a>

## Application Details

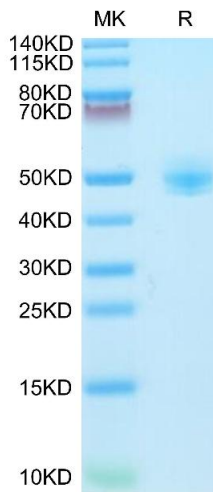
---

Restrictions:	For Research Use only
---------------	-----------------------

## Handling

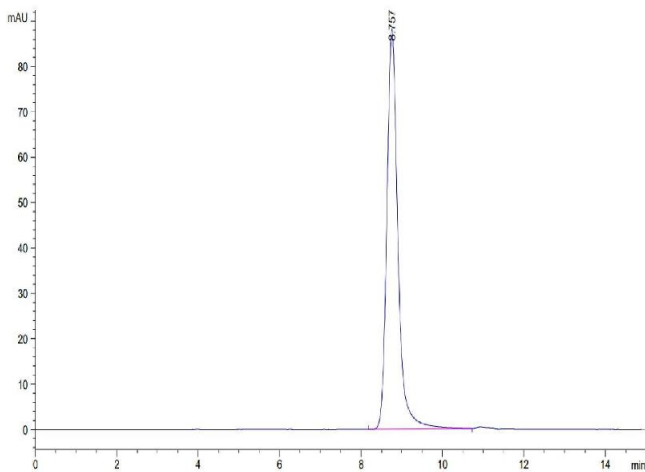
---

Format:	Lyophilized
Reconstitution:	Centrifuge the tube before opening. Reconstituting to a concentration more than 100 µg/mL is recommended. Dissolve the lyophilized protein in distilled water.
Buffer:	Lyophilized from 0.22µm filtered solution in PBS ( pH 7.4). Normally 8 % trehalose is added as protectant before lyophilization.
Storage:	-20 °C,-80 °C
Storage Comment:	-20 to -80°C for 12 months as supplied from date of receipt., -80°C for 3-6 months after reconstitution., 2-8°C for 2-7 days after reconstitution., Recommend to aliquot the protein into smaller quantities for optimal storage. Please minimize freeze-thaw cycles.
Expiry Date:	12 months



### SDS-PAGE

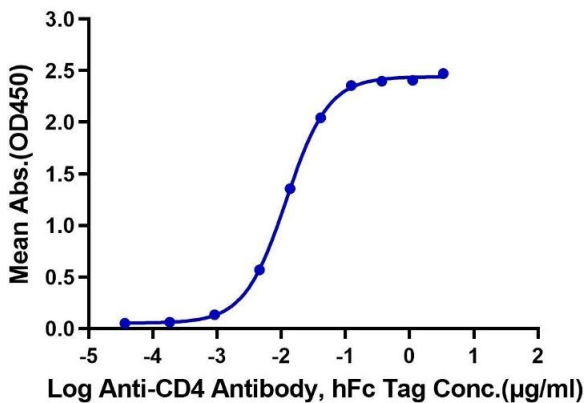
**Image 1.** Rhesus macaque CD4 on Tris-Bis PAGE under reduced condition. The purity is greater than 95 % .



### Size-exclusion chromatography-High Pressure Liquid Chromatography

**Image 2.** The purity of Rhesus macaque CD4 is greater than 95 % as determined by SEC-HPLC.

**Rhesus macaque CD4, His Tag ELISA**  
0.1µg Rhesus macaque CD4, His Tag Per Well



### ELISA

**Image 3.** Immobilized Rhesus macaque CD4, His Tag at 1 µg/mL (100 µL/Well) on the plate. Dose response curve for Anti-CD4 Antibody, hFc Tag with the EC50 of 12 ng/mL determined by ELISA.