



Datasheet for ABIN7274254  
**CD28 Protein (CD28) (AA 19-152) (mFc Tag)**



[Go to Product page](#)

**2** Images

Overview

Quantity:	100 µg
Target:	CD28
Protein Characteristics:	AA 19-152
Origin:	Human, Cynomolgus, Rhesus Monkey
Source:	HEK-293 Cells
Protein Type:	Recombinant
Purification tag / Conjugate:	This CD28 protein is labelled with mFc Tag.

Product Details

Purpose:	Human/Cynomolgus/Rhesus macaque CD28 Protein
Sequence:	Asn19-Pro152
Characteristics:	Recombinant Human/Cynomolgus/Rhesus macaque CD28 Protein is expressed from HEK293 with mFc (IgG2a) tag at the N-Terminus.It contains Asn19-Pro152.
Purity:	> 95 % as determined by Tris-Bis PAGE
Sterility:	0.22 µm filtered
Endotoxin Level:	Less than 1EU per µg by the LAL method.
Biological Activity Comment:	Immobilized Human/Cynomolgus/Rhesus macaque CD28, mFc (IgG2a) Tag at 0.5µg/ml (100µl/Well) on the plate. Dose response curve for Anti-CD28 Antibody, hFc Tag with the EC50 23.3ng/ml determined by ELISA. See testing image for detail.

## Target Details

---

Target:	CD28
Alternative Name:	CD28 ( <a href="#">CD28 Products</a> )
Background:	CD28 is the receptor for CD80 (B7-1) and CD86 (B7-2) proteins. When activated by Toll-like receptor ligands, the CD80 expression is upregulated in antigen presenting cells (APCs). The CD86 expression on antigen presenting cells is constitutive. CD28 is the only B7 receptor constitutively expressed on naive T cells.
Molecular Weight:	41.9 kDa. Due to glycosylation, the protein migrates to 65-68 kDa based on Tris-Bis PAGE result.
Pathways:	<a href="#">TCR Signaling</a> , <a href="#">Fc-epsilon Receptor Signaling Pathway</a> , <a href="#">EGFR Signaling Pathway</a> , <a href="#">Regulation of Leukocyte Mediated Immunity</a> , <a href="#">Positive Regulation of Immune Effector Process</a> , <a href="#">Production of Molecular Mediator of Immune Response</a>

## Application Details

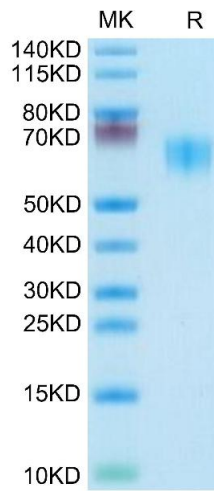
---

Restrictions:	For Research Use only
---------------	-----------------------

## Handling

---

Format:	Lyophilized
Reconstitution:	Centrifuge the tube before opening. Reconstituting to a concentration more than 100 µg/mL is recommended. Dissolve the lyophilized protein in distilled water.
Buffer:	Lyophilized from 0.22µm filtered solution in PBS ( pH 7.4). Normally 8 % trehalose is added as protectant before lyophilization.
Storage:	-20 °C,-80 °C
Storage Comment:	-20 to -80°C for 12 months as supplied from date of receipt., -80°C for 3-6 months after reconstitution., 2-8°C for 2-7 days after reconstitution., Recommend to aliquot the protein into smaller quantities for optimal storage. Please minimize freeze-thaw cycles.
Expiry Date:	12 months

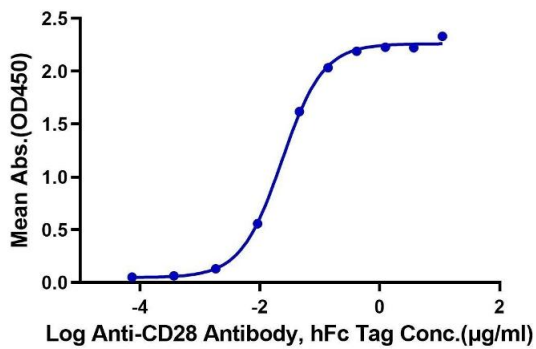


### SDS-PAGE

**Image 1.** Human/Cynomolgus/Rhesus macaque CD28 on Tris-Bis PAGE under reduced condition. The purity is greater than 95 %.

### Human/Cynomolgus/Rhesus macaque CD28, mFc Tag ELISA

0.05µg Human/Cynomolgus/Rhesus macaque CD28, mFc Tag Per Well



### ELISA

**Image 2.** Immobilized Human/Cynomolgus/Rhesus macaque CD28, mFc Tag at 0.5 µg/mL (100 µL/Well) on the plate. Dose response curve for Anti-CD28 Antibody, hFc Tag with the EC50 23.3 ng/mL determined by ELISA.