

Datasheet for ABIN7274291  
**CDCP1 Protein (His tag)**

## 3 Images

[Go to Product page](#)

## Overview

Quantity:	100 µg
Target:	CDCP1
Origin:	Cynomolgus
Source:	HEK-293 Cells
Protein Type:	Recombinant
Purification tag / Conjugate:	This CDCP1 protein is labelled with His tag.

## Product Details

Sequence:	Ala29-Thr667
Purity:	> 95% as determined by Tris-Bis PAGE, > 95% as determined by HPLC
Sterility:	0.22 µm filtered
Endotoxin Level:	Less than 1EU per µg by the LAL method.
Biological Activity Comment:	Immobilized Cynomolgus CDCP1 at 2µg/ml (100µl/Well) on the plate. Dose response curve for Anti-CDCP1 Ab., hFc Tag with the EC50 of 23.7ng/ml determined by ELISA. See testing image for detail.

## Target Details

Target:	CDCP1
Alternative Name:	CDCP1 ( <a href="#">CDCP1 Products</a> )
Background:	CDCP1, CD318, SIMA135, TRASK, UNQ2486, PRO5773, Tumor metastasis depends on the dynamic regulation of cell adhesion through $\beta$ 1-integrin. The Cub-Domain Containing Protein-1,

## Target Details

CDCP1, is a transmembrane glycoprotein which regulates cell adhesion. Overexpression and loss of CDCP1 have been observed in the same cancer types to promote metastatic progression.

Molecular Weight: 73.2 kDa. Due to glycosylation, the protein migrates to 80-115 kDa based on Tris-Bis PAGE result.

NCBI Accession: [XP\\_001114659](#)

## Application Details

Restrictions: For Research Use only

## Handling

Format: Lyophilized

Reconstitution: Centrifuge tubes before opening. Reconstituting to a concentration more than 100 µg/mL is recommended (usually we use 1 mg/mL solution for lyophilization). Dissolve the lyophilized protein in distilled water.

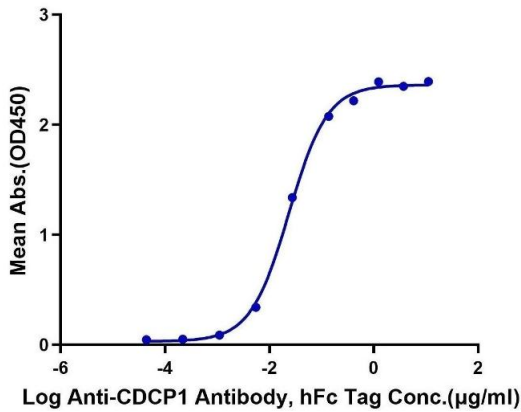
Buffer: Lyophilized from 0.22µm filtered solution in PBS ( pH 7.4). Normally 5 % trehalose is added as protectant before lyophilization.

Storage: 4 °C, -80 °C

Storage Comment: Reconstituted protein stable at -80°C for 12 months, 4°C for 1 week. Use a manual defrost freezer and avoid repeated freeze-thaw cycles.

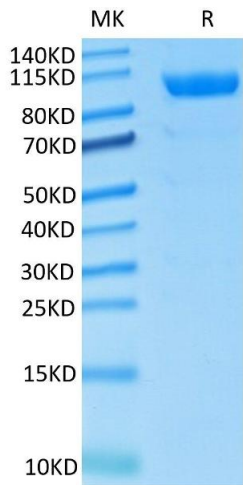
Expiry Date: 12 months

**Cynomolgus CDCP1, His Tag ELISA**  
0.2µg Cynomolgus CDCP1, His Tag Per Well



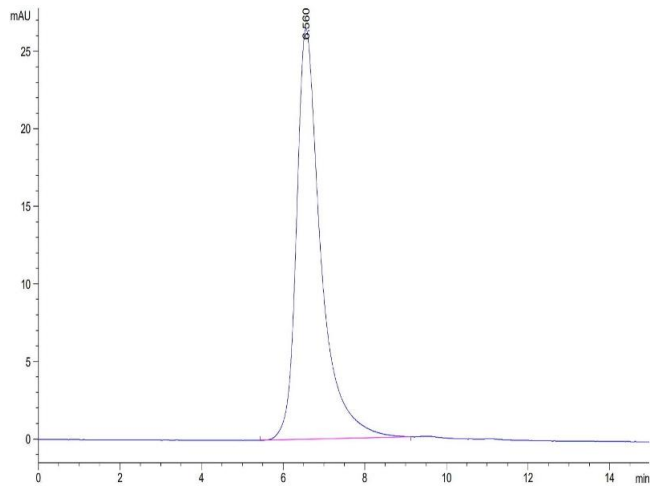
**ELISA**

**Image 1.** Immobilized Cynomolgus CDCP1 at 2 µg/mL (100 µL/Well) on the plate. Dose response curve for Anti-CDCP1 Ab., hFc Tag with the EC50 of 23.7 ng/mL determined by ELISA.



**SDS-PAGE**

**Image 2.** Cynomolgus CDCP1 on Tris-Bis PAGE under reduced condition. The purity is greater than 95 % ..



**Size-exclusion chromatography-High Pressure Liquid Chromatography**

**Image 3.** The purity of Cynomolgus CDCP1 is greater than 95 % as determined by SEC-HPLC.