

Datasheet for ABIN7274293
CDCP1 Protein (His tag)[Go to Product page](#)

4 Images

Overview

Quantity:	100 µg
Target:	CDCP1
Origin:	Human
Source:	HEK-293 Cells
Protein Type:	Recombinant
Purification tag / Conjugate:	This CDCP1 protein is labelled with His tag.

Product Details

Sequence:	Phe30-Leu666
Purity:	> 95% as determined by Tris-Bis PAGE,> 95% as determined by HPLC
Sterility:	0.22 µm filtered
Endotoxin Level:	Less than 1EU per µg by the LAL method.
Biological Activity Comment:	Immobilized Human CDCP1 at 2µg/ml (100µl/Well). Dose response curve for Anti-CDCP1 Antibody, hFc Tag with the EC50 of 8.0ng/ml determined by ELISA. The affinity constant of 0.18nM as determined in SPR assay (Biacore T200). See testing image for detail.

Target Details

Target:	CDCP1
Alternative Name:	CDCP1 (CDCP1 Products)
Background:	CDCP1, CD318, SIMA135, TRASK, UNQ2486, PRO5773, Tumor metastasis depends on the dynamic regulation of cell adhesion through β 1-integrin. The Cub-Domain Containing Protein-1,

Target Details

CDCP1, is a transmembrane glycoprotein which regulates cell adhesion. Overexpression and loss of CDCP1 have been observed in the same cancer types to promote metastatic progression.

Molecular Weight: 72.8 kDa. Due to glycosylation, the protein migrates to 80-100 kDa based on Tris-Bis PAGE result.

Application Details

Restrictions: For Research Use only

Handling

Format: Lyophilized

Reconstitution: Centrifuge tubes before opening. Reconstituting to a concentration more than 100 µg/mL is recommended (usually we use 1 mg/mL solution for lyophilization). Dissolve the lyophilized protein in distilled water.

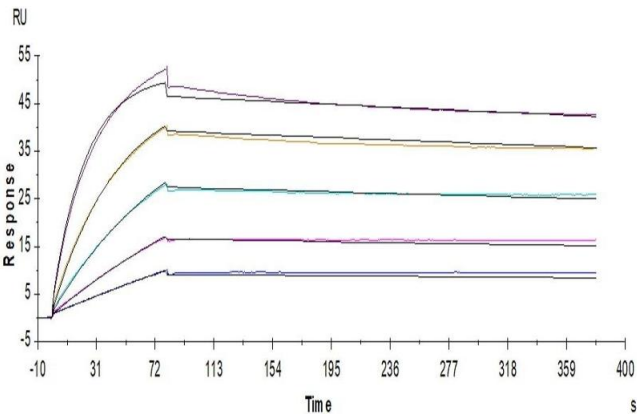
Buffer: Lyophilized from 0.22µm filtered solution in PBS (pH 7.4). Normally 5 % trehalose is added as protectant before lyophilization.

Storage: 4 °C,-80 °C

Storage Comment: Reconstituted protein stable at -80°C for 12 months, 4°C for 1 week. Use a manual defrost freezer and avoid repeated freeze-thaw cycles.

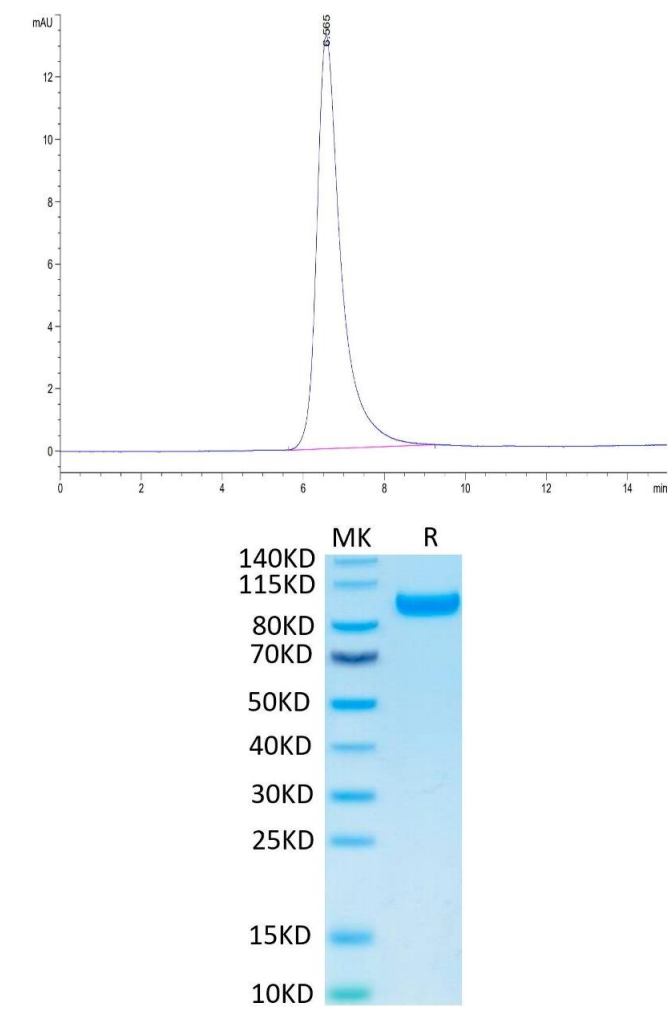
Expiry Date: 12 months

Images



Surface Plasmon Resonance

Image 1. Human CDCP1, His Tag captured on CM5 Chip via anti-His antibody can bind Anti-CDCP1 Antibody, hFc Tag with an affinity constant of 0.18nM as determined in SPR assay (Biacore T200).



Size-exclusion chromatography-High Pressure Liquid Chromatography

Image 2. The purity of Human CDCP1 is greater than 95 % as determined by SEC-HPLC.

SDS-PAGE

Image 3. Human CDCP1 on Tris-Bis PAGE under reduced condition. The purity is greater than 95 % .

Please check the [product details page](#) for more images. Overall 4 images are available for ABIN7274293.