

Datasheet for ABIN7274294

CDCP1 Protein (Fc Tag)**3** Images[Go to Product page](#)

Overview

Quantity:	100 µg
Target:	CDCP1
Origin:	Human
Source:	HEK-293 Cells
Protein Type:	Recombinant
Purification tag / Conjugate:	This CDCP1 protein is labelled with Fc Tag.

Product Details

Sequence:	Phe30-Leu666
Purity:	> 95% as determined by Tris-Bis PAGE, > 95% as determined by HPLC
Sterility:	0.22 µm filtered
Endotoxin Level:	Less than 1EU per µg by the LAL method.
Biological Activity Comment:	Immobilized Human CDCP1, hFc Tag at 2µg/ml (100µl/Well) on the plate. Dose response curve for Biotinylated Anti-CDCP1 Antibody, hFc Tag with the EC50 of 15.3ng/ml determined by ELISA. See testing image for detail.

Target Details

Target:	CDCP1
Alternative Name:	CDCP1 (CDCP1 Products)
Background:	CDCP1, CD318, SIMA135, TRASK, UNQ2486, PRO5773, Tumor metastasis depends on the dynamic regulation of cell adhesion through β 1-integrin. The Cub-Domain Containing Protein-1,

Target Details

CDCP1, is a transmembrane glycoprotein which regulates cell adhesion. Overexpression and loss of CDCP1 have been observed in the same cancer types to promote metastatic progression.

Molecular Weight: 98.4 kDa. Due to glycosylation, the protein migrates to 115-130 kDa based on Tris-Bis PAGE result.

Application Details

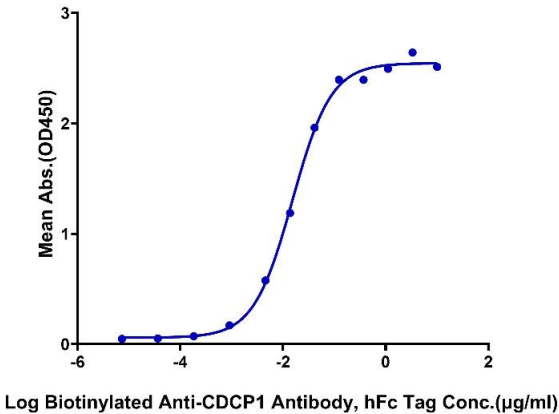
Restrictions: For Research Use only

Handling

Format:	Lyophilized
Reconstitution:	Centrifuge tubes before opening. Reconstituting to a concentration more than 100 µg/mL is recommended (usually we use 1 mg/mL solution for lyophilization). Dissolve the lyophilized protein in distilled water.
Buffer:	Lyophilized from 0.22µm filtered solution in PBS (pH 7.4). Normally 5 % trehalose is added as protectant before lyophilization.
Storage:	4 °C,-80 °C
Storage Comment:	Reconstituted protein stable at -80°C for 12 months, 4°C for 1 week. Use a manual defrost freezer and avoid repeated freeze-thaw cycles.
Expiry Date:	12 months

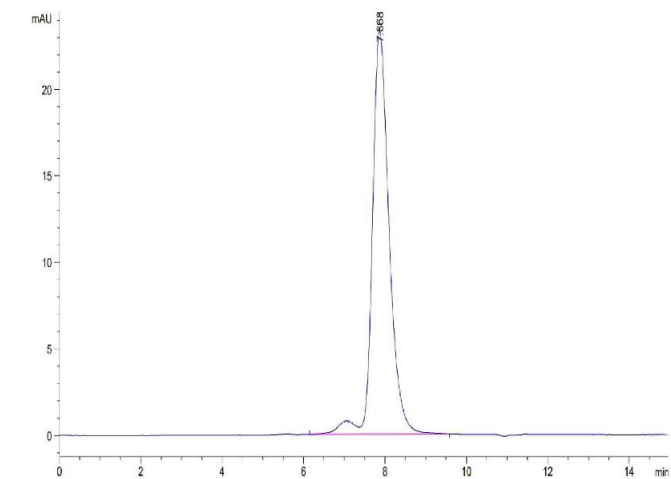
Images

Human CDCP1, hFc Tag ELISA
0.2µg Human CDCP1, hFc Tag Per Well



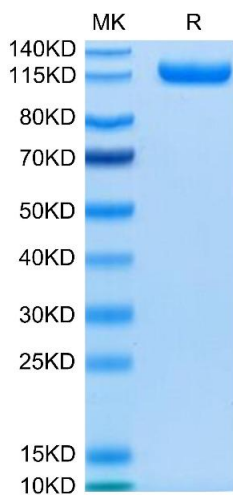
ELISA

Image 1. Immobilized Human CDCP1, hFc Tag at 2 µg/mL (100 µL/Well) on the plate. Dose response curve for Biotinylated Anti-CDCP1 Antibody, hFc Tag with the EC50 of 15.3 ng/mL determined by ELISA.



Size-exclusion chromatography-High Pressure Liquid Chromatography

Image 2. The purity of Human CDCP1 is greater than 95 % as determined by SEC-HPLC.



SDS-PAGE

Image 3. Human CDCP1 on Tris-Bis PAGE under reduced condition. The purity is greater than 95 % .