

Datasheet for ABIN7274300

**CD3 epsilon Protein (CD3E) (His tag)****4** Images[Go to Product page](#)

## Overview

Quantity:	100 µg
Target:	CD3 epsilon (CD3E)
Origin:	Cynomolgus
Source:	HEK-293 Cells
Protein Type:	Recombinant
Purification tag / Conjugate:	This CD3 epsilon protein is labelled with His tag.

## Product Details

Sequence:	Gln22-Asp117
Purity:	> 95% as determined by Tris-Bis PAGE, > 95% as determined by HPLC
Sterility:	0.22 µm filtered
Endotoxin Level:	Less than 1EU per µg by the LAL method.
Biological Activity Comment:	Immobilized Cynomolgus CD3E, His Tag at 0.5µg/ml (100µl/well) on the plate. Dose response curve for Biotinylated Anti-CD3 Antibody, mFc Tag with the EC50 of 32.7ng/ml determined by ELISA. See testing image for detail.

## Target Details

Target:	CD3 epsilon (CD3E)
Alternative Name:	CD3E ( <a href="#">CD3E Products</a> )
Background:	CD3e, CD3E, T3E, FLJ18683, TCRC, CD3-epsilon, IMD18, CD3E, is a single-pass type I membrane protein. CD3 (cluster of differentiation 3) T cell co-receptor helps to activate both the cytotoxic T

## Target Details

cell (CD8 naive T cells) and also T helper cells (CD4 naive T cells). It consists of a protein complex and is composed of four distinct chains. In mammals, the complex contains a CD3 $\gamma$  chain, a CD3 $\delta$  chain, and two CD3 $\epsilon$  chains.

Molecular Weight: 11.7 kDa. Due to glycosylation, the protein migrates to 14-16 kDa based on Tris-Bis PAGE result.

Pathways: [TCR Signaling](#), [CXCR4-mediated Signaling Events](#), [Ubiquitin Proteasome Pathway](#)

## Application Details

Restrictions: For Research Use only

## Handling

Format: Lyophilized

Reconstitution: Centrifuge tubes before opening. Reconstituting to a concentration more than 100  $\mu$ g/mL is recommended (usually we use 1 mg/mL solution for lyophilization). Dissolve the lyophilized protein in distilled water.

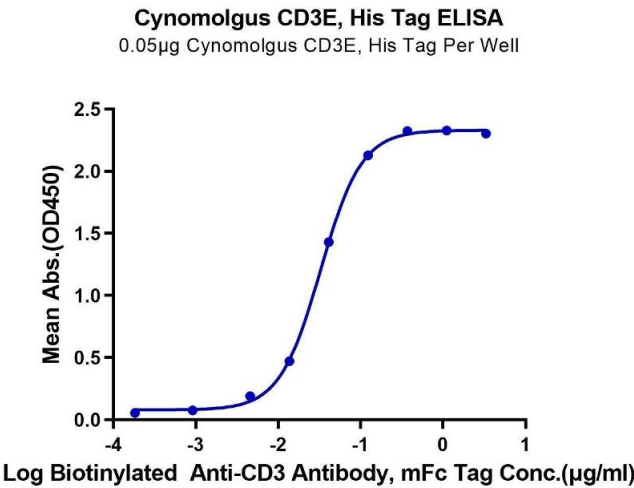
Buffer: Lyophilized from 0.22 $\mu$ m filtered solution in PBS ( pH 7.4). Normally 5 % trehalose is added as protectant before lyophilization.

Storage: 4  $^{\circ}$ C, -80  $^{\circ}$ C

Storage Comment: Reconstituted protein stable at -80 $^{\circ}$ C for 12 months, 4 $^{\circ}$ C for 1 week. Use a manual defrost freezer and avoid repeated freeze-thaw cycles.

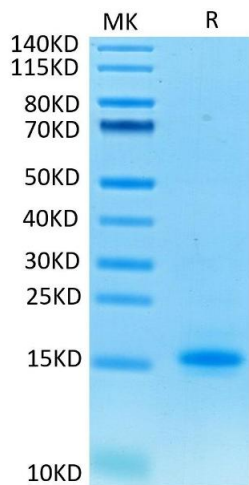
Expiry Date: 12 months

## Images



### ELISA

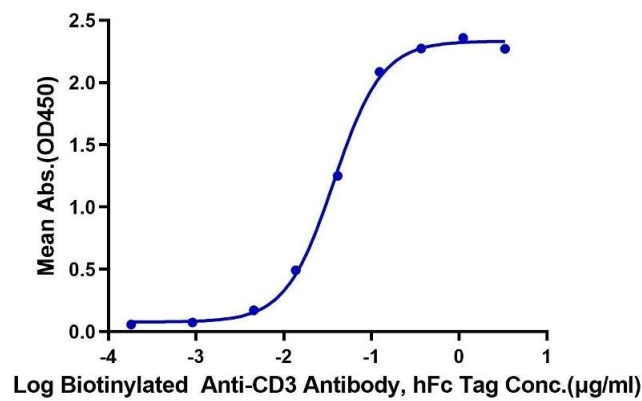
**Image 1.** Immobilized Cynomolgus CD3E, His Tag at 0.5  $\mu$ g/mL (100  $\mu$ L/well) on the plate. Dose response curve for Biotinylated Anti-CD3 Antibody, mFc Tag with the EC50 of 32.7 ng/mL determined by ELISA.



SDS-PAGE

**Image 2.** Cynomolgus CD3E on Tris-Bis PAGE under reduced condition. The purity is greater than 95 % .

**Cynomolgus CD3E, His Tag ELISA**  
0.05µg Cynomolgus CD3E, His Tag Per Well



ELISA

**Image 3.** Immobilized Cynomolgus CD3E, His Tag at 0.5 µg/mL (100 µL/well) on the plate. Dose response curve for Biotinylated Anti-CD3 Antibody, hFc Tag with the EC50 of 37.3 ng/mL determined by ELISA.

Please check the [product details page](#) for more images. Overall 4 images are available for ABIN7274300.