

Datasheet for ABIN7274317

CHRD1 Protein (AA 28-456) (His tag)**2** Images[Go to Product page](#)

Overview

Quantity:	100 µg
Target:	CHRD1
Protein Characteristics:	AA 28-456
Origin:	Human
Source:	Escherichia coli (E. coli)
Protein Type:	Recombinant
Purification tag / Conjugate:	This CHRD1 protein is labelled with His tag.

Product Details

Purpose:	Human CHRD1 Protein
Sequence:	Glu28-Cys456
Characteristics:	Recombinant Human CHRD1 Protein is expressed from E.coli with His tag at the N-Terminus.It contains Glu28-Cys456.
Purity:	> 90 % as determined by Tris-Bis PAGE
Sterility:	0.22 µm filtered
Endotoxin Level:	Less than 1EU per µg by the LAL method.
Biological Activity Comment:	Immobilized Human CHRD1, His Tag at 1µg/ml (100µl/Well) on the plate. Dose response curve for Anti-CHRD1 Antibody, hFc Tag with the EC50 of 33.8ng/ml determined by ELISA. See testing image for detail.

Target Details

Target:	CHRD1
Alternative Name:	CHRD1 (CHRD1 Products)
Background:	CHRD1 (Chordin-like 1) is a secreted protein that acts as an antagonist of bone morphogenetic protein (BMP). BMP plays a role as an activator of BMP receptor II (BMPRII), which mediates extracellular to intracellular signal transmission and is involved in carcinogenesis and metastasis. The hypermethylation of the CHRD1 promoter in gastric cancer, which induced low expression of CHRD1 and decreased its secretion to the supernatant.
Molecular Weight:	50 kDa same as Tris-Bis PAGE result.

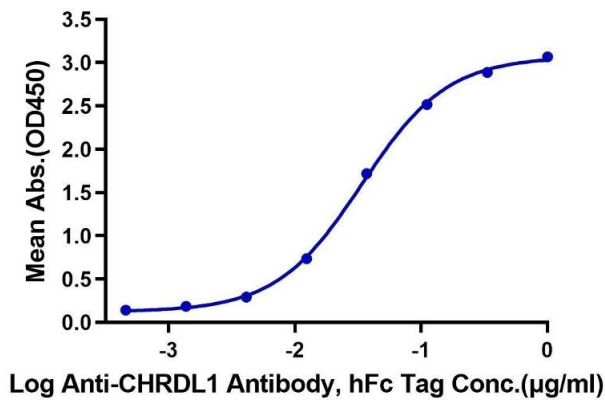
Application Details

Restrictions:	For Research Use only
---------------	-----------------------

Handling

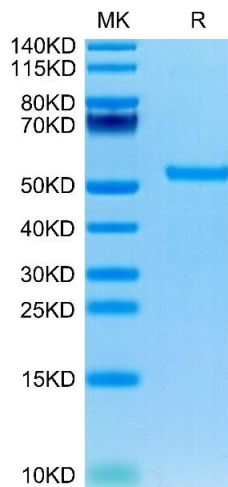
Format:	Lyophilized
Reconstitution:	Centrifuge the tube before opening. Reconstituting to a concentration more than 100 µg/mL is recommended. Dissolve the lyophilized protein in 4 mM HCl.
Buffer:	Lyophilized from 0.22µm filtered solution in 4 mM HCl. Normally 8 % trehalose is added as protectant before lyophilization.
Storage:	-20 °C, -80 °C
Storage Comment:	-20 to -80°C for 12 months as supplied from date of receipt., -80°C for 3-6 months after reconstitution., -2-8°C for 2-7 days after reconstitution., Recommend to aliquot the protein into smaller quantities for optimal storage. Please minimize freeze-thaw cycles.
Expiry Date:	12 months

Human CHRDL1, His Tag ELISA
0.1µg Human CHRDL1, His Tag Per Well



ELISA

Image 1. Immobilized Human CHRDL1, His Tag at 1 µg/mL (100 µL/Well) on the plate. Dose response curve for Anti-CHRDL1 Antibody, hFc Tag with the EC50 of 33.8 ng/mL determined by ELISA.



SDS-PAGE

Image 2. Human CHRDL1 on Tris-Bis PAGE under reduced condition. The purity is greater than 95 % .