

Datasheet for ABIN7274325

**CHODL Protein (AA 22-216) (Fc Tag)**[Go to Product page](#)**2** Images

## Overview

|                               |   |
|-------------------------------|---|
| Quantity:                     | 100 µg                                      |
| Target:                       | CHODL                                       |
| Protein Characteristics:      | AA 22-216                                   |
| Origin:                       | Mouse                                       |
| Source:                       | HEK-293 Cells                               |
| Protein Type:                 | Recombinant                                 |
| Purification tag / Conjugate: | This CHODL protein is labelled with Fc Tag. |

## Product Details

|                  |  |
|------------------|--|
| Purpose:         | Mouse CHODL Protein  |
| Sequence:        | Arg22-Asn216   |
| Characteristics: | Recombinant Mouse CHODL Protein is expressed from HEK293 with hFc tag at the C-Terminus. It contains Arg22-Asn216. |
| Purity:          | > 95 % as determined by Tris-Bis PAGE, > 95 % as determined by HPLC  |
| Sterility:       | 0.22 µm filtered   |
| Endotoxin Level: | Less than 1EU per µg by the LAL method.  |

## Target Details

|                   |  |
|-------------------|--|
| Target:           | CHODL                                    |
| Alternative Name: | CHODL ( <a href="#">CHODL Products</a> ) |

## Target Details

**Background:** Chondrolectin (CHODL) is commonly overexpressed in the majority of lung cancers, indicating a possible correlation between CHODL and metastasis of lung cancer cells. the expression of CHODL is significantly decreased in HCC clinical samples and in HCC cell lines. Overexpression of CHODL in SMMC7721 cells with a lentiviral vector increased SMMC7721 cell migration and invasion.

**Molecular Weight:** 48.7 kDa. Due to glycosylation, the protein migrates to 65-68 kDa based on Tris-Bis PAGE result.

## Application Details

**Restrictions:** For Research Use only

## Handling

**Format:** Lyophilized

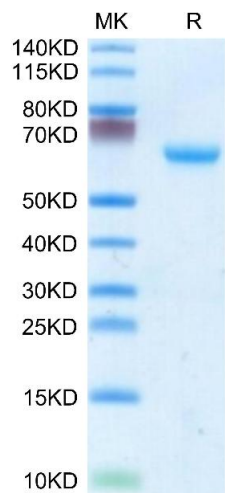
**Reconstitution:** Centrifuge the tube before opening. Reconstituting to a concentration more than 100 µg/mL is recommended. Dissolve the lyophilized protein in distilled water.

**Buffer:** Lyophilized from 0.22µm filtered solution in PBS ( pH 7.4). Normally 8 % trehalose is added as protectant before lyophilization.

**Storage:** -20 °C,-80 °C

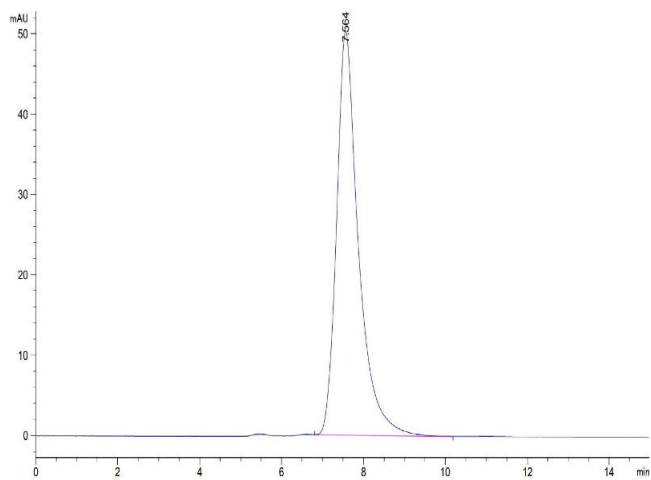
**Storage Comment:** -20 to -80°C for 12 months as supplied from date of receipt.,-80°C for 3-6 months after reconstitution.,2-8°C for 2-7 days after reconstitution.,Recommend to aliquot the protein into smaller quantities for optimal storage. Please minimize freeze-thaw cycles.

**Expiry Date:** 12 months



SDS-PAGE

**Image 1.** Mouse CHODL on Tris-Bis PAGE under reduced condition. The purity is greater than 95 % .



Size-exclusion chromatography-High Pressure Liquid Chromatography

**Image 2.** The purity of Mouse CHODL is greater than 95 % as determined by SEC-HPLC.