

Datasheet for ABIN7274333

Adipsin Protein (AA 21-253) (His tag)

4 Images

[Go to Product page](#)

Overview

Quantity:	100 µg
Target:	Adipsin (CFD)
Protein Characteristics:	AA 21-253
Origin:	Rhesus Monkey
Source:	HEK-293 Cells
Protein Type:	Recombinant
Purification tag / Conjugate:	This Adipsin protein is labelled with His tag.

Product Details

Purpose:	Rhesus macaque Complement Factor D/CFD Protein
Sequence:	Gln21-Ala253
Characteristics:	Recombinant Rhesus macaque Complement Factor D/CFD Protein is expressed from HEK293 with His tag at the C-Terminus. It contains Gln21-Ala253.
Purity:	> 95 % as determined by Tris-Bis PAGE, > 95 % as determined by HPLC
Sterility:	0.22 µm filtered
Endotoxin Level:	Less than 1EU per µg by the LAL method.
Biological Activity Comment:	Immobilized Rhesus macaque Complement Factor D, His Tag at 1µg/ml (100µl/well) on the plate. Dose response curve for Anti-Complement Factor D Antibody, hFc Tag with the EC50 of 10.6ng/ml determined by ELISA. See testing image for detail.

Target Details

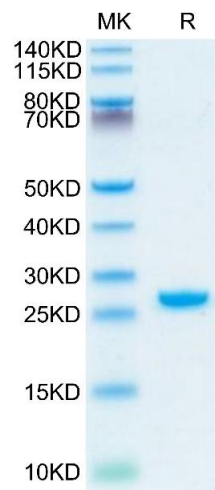
Target:	Adipsin (CFD)
Alternative Name:	Complement Factor D (CFD Products)
Background:	Complement factor D is a serine protease essential for the activation of the alternative pathway and is expressed in the kidney, adipocytes, and macrophages. Factor D is found at relatively high levels in glomeruli suggesting that this component of the complement cascade could influence renal pathophysiology. Complement factor D or alternative pathway activation is needed to prevent spontaneous accumulation of C3 and IgM deposits within the mesangium.
Molecular Weight:	25.7 kDa. Due to glycosylation, the protein migrates to 26-30 kDa based on Tris-Bis PAGE result.
Pathways:	Complement System

Application Details

Restrictions:	For Research Use only
---------------	-----------------------

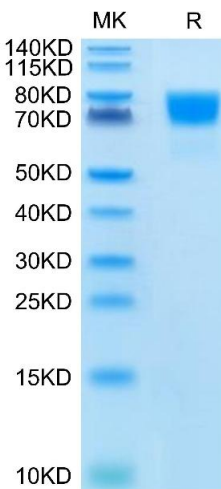
Handling

Format:	Lyophilized
Reconstitution:	Centrifuge the tube before opening. Reconstituting to a concentration more than 100 µg/mL is recommended. Dissolve the lyophilized protein in distilled water.
Buffer:	Lyophilized from 0.22µm filtered solution in 50 mM Tris, 150 mM NaCl (pH 8.0). Normally 8 % trehalose is added as protectant before lyophilization.
Storage:	-20 °C,-80 °C
Storage Comment:	-20 to -80°C for 12 months as supplied from date of receipt.,-80°C for 3-6 months after reconstitution.,2-8°C for 2-7 days after reconstitution.,Recommend to aliquot the protein into smaller quantities for optimal storage. Please minimize freeze-thaw cycles.
Expiry Date:	12 months



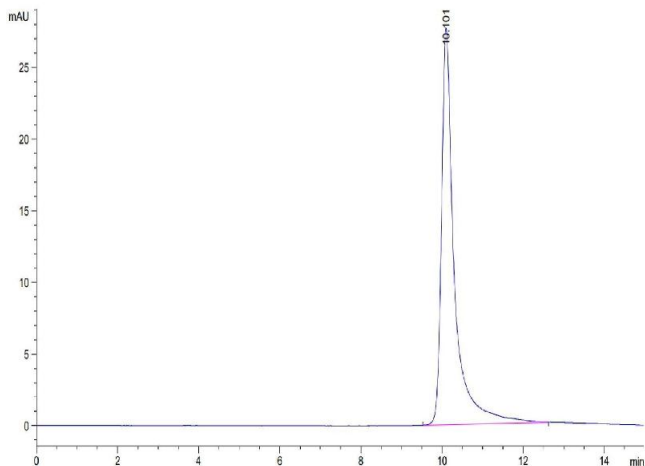
SDS-PAGE

Image 1. Rhesus macaque Complement Factor D on Tris-Bis PAGE under reduced condition. The purity is greater than 95 % .



SDS-PAGE

Image 2. Rhesus macaque Complement Factor D on Tris-Bis PAGE under reduced condition. The purity is greater than 95 % .



Size-exclusion chromatography-High Pressure Liquid Chromatography

Image 3. The purity of Rhesus macaque Complement Factor D is greater than 95 % as determined by SEC-HPLC.

Please check the [product details page](#) for more images. Overall 4 images are available for ABIN7274333.