

Datasheet for ABIN7274337

Complement Factor H Protein (CFH) (AA 860-1231) (His tag)[Go to Product page](#)**3** Images

Overview

Quantity:	100 µg
Target:	Complement Factor H (CFH)
Protein Characteristics:	AA 860-1231
Origin:	Human
Source:	HEK-293 Cells
Protein Type:	Recombinant
Purification tag / Conjugate:	This Complement Factor H protein is labelled with His tag.

Product Details

Purpose:	Human Factor H/CFH Protein
Sequence:	Ser860-Arg1231
Characteristics:	Recombinant Human Factor H/CFH Protein is expressed from HEK293 with His tag at the C-Terminus. It contains Ser860-Arg1231.
Purity:	> 95 % as determined by Tris-Bis PAGE, > 95 % as determined by HPLC
Sterility:	0.22 µm filtered
Endotoxin Level:	Less than 1EU per µg by the LAL method.
Biological Activity Comment:	Immobilized Human Factor H, His Tag at 0.2µg/ml (100µl/well) on the plate. Dose response curve for Anti-Factor H Antibody, hFc Tag with the EC50 of 14.8ng/ml determined by ELISA. See testing image for detail.

Target Details

Target:	Complement Factor H (CFH)
Alternative Name:	Factor H (CFH Products)
Background:	Factor H is the major soluble inhibitor of complement, where its binding to self markers (i.e., particular glycan structures) prevents complement activation and amplification on host surfaces. Not surprisingly, mutations and polymorphisms that affect recognition of self by factor H are associated with diseases of complement dysregulation, such as age-related macular degeneration and atypical haemolytic uremic syndrome. In addition, pathogens (i.e., non-self) and cancer cells (i.e., altered-self) can hijack factor H to evade the immune response.
Molecular Weight:	42.8 kDa. Due to glycosylation, the protein migrates to 60-68 kDa based on Tris-Bis PAGE result.
Pathways:	Complement System , Cellular Response to Molecule of Bacterial Origin

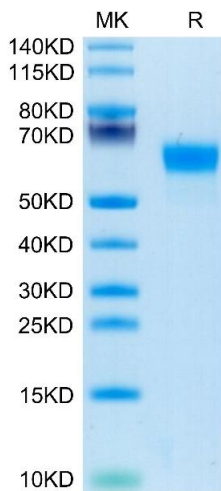
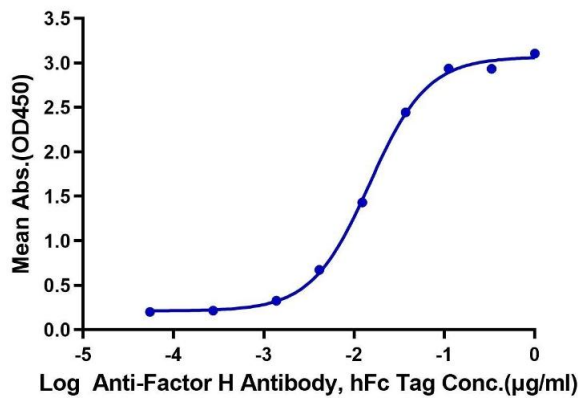
Application Details

Restrictions:	For Research Use only
---------------	-----------------------

Handling

Format:	Lyophilized
Reconstitution:	Centrifuge the tube before opening. Reconstituting to a concentration more than 100 µg/mL is recommended. Dissolve the lyophilized protein in distilled water.
Buffer:	Lyophilized from 0.22µm filtered solution in PBS (pH 7.4). Normally 8 % trehalose is added as protectant before lyophilization.
Storage:	-20 °C,-80 °C
Storage Comment:	-20 to -80°C for 12 months as supplied from date of receipt.,-80°C for 3-6 months after reconstitution.,-2-8°C for 2-7 days after reconstitution.,Recommend to aliquot the protein into smaller quantities for optimal storage. Please minimize freeze-thaw cycles.
Expiry Date:	12 months

Human Factor H, His Tag ELISA
0.02µg Human Factor H, His Tag Per Well

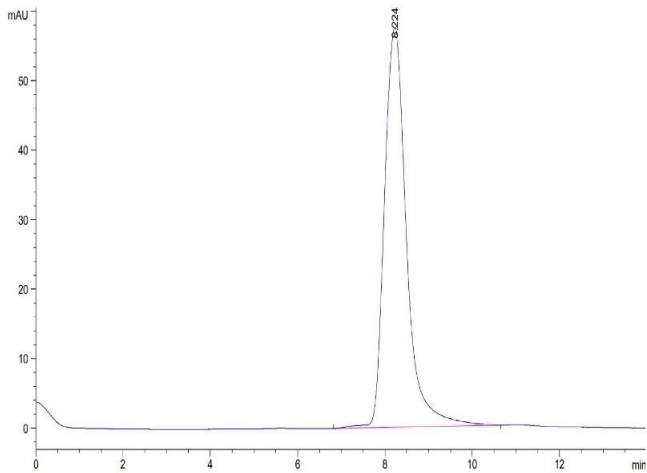


ELISA

Image 1. Immobilized Human Factor H, His Tag at 0.2 µg/mL (100 µL/well) on the plate. Dose response curve for Anti-Factor H Antibody, hFc Tag with the EC50 of 14.8 ng/mL determined by ELISA.

SDS-PAGE

Image 2. Human Factor H on Tris-Bis PAGE under reduced condition. The purity is greater than 95 % .



Size-exclusion chromatography-High Pressure Liquid Chromatography

Image 3. The purity of Human Factor H is greater than 95 % as determined by SEC-HPLC.