

Datasheet for ABIN7274339

Complement Factor I Protein (CFI) (AA 19-583) (His tag)[Go to Product page](#)**2** Images

Overview

Quantity:	100 µg
Target:	Complement Factor I (CFI)
Protein Characteristics:	AA 19-583
Origin:	Human
Source:	HEK-293 Cells
Protein Type:	Recombinant
Purification tag / Conjugate:	This Complement Factor I protein is labelled with His tag.

Product Details

Purpose:	Human Complement factor I Protein
Sequence:	Lys19-Val583
Characteristics:	Recombinant Human Complement factor I Protein is expressed from HEK293 with His tag at the C-Terminus. It contains Lys19-Val583.
Purity:	> 95 % as determined by Tris-Bis PAGE, > 95 % as determined by HPLC
Sterility:	0.22 µm filtered
Endotoxin Level:	Less than 1EU per µg by the LAL method.

Target Details

Target:	Complement Factor I (CFI)
Alternative Name:	Complement factor I (CFI Products)

Target Details

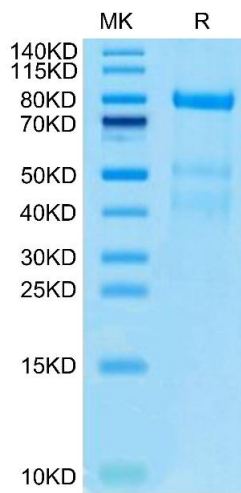
Background:	Complement factor I (CFI) is a serine protease which plays a key role in the modulation of complement system and the induced-fit factor responsible for controlling the complement-mediated processes.
Molecular Weight:	64.58 kDa. Due to enzyme lysis and glycosylation, the protein migrates to 75-95 kDa based on Tris-Bis PAGE result.
UniProt:	P05156
Pathways:	Complement System

Application Details

Restrictions:	For Research Use only
---------------	-----------------------

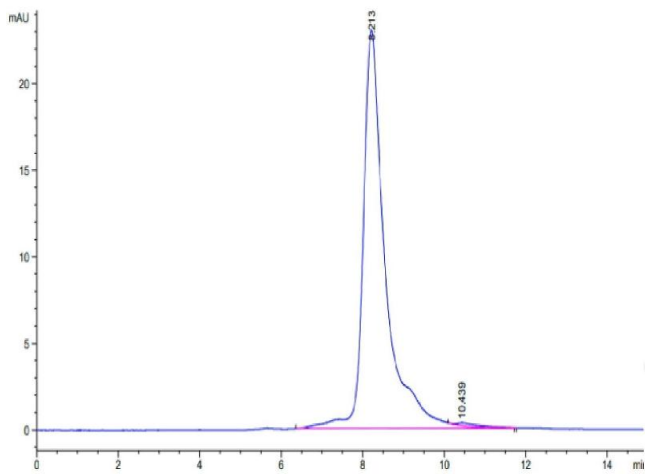
Handling

Format:	Lyophilized
Reconstitution:	Centrifuge the tube before opening. Reconstituting to a concentration more than 100 µg/mL is recommended. Dissolve the lyophilized protein in distilled water.
Buffer:	Lyophilized from 0.22µm filtered solution in 20 mM Tris, 150 mM NaCl (pH 8.0). Normally 8 % trehalose is added as protectant before lyophilization.
Storage:	-20 °C,-80 °C
Storage Comment:	-20 to -80°C for 12 months as supplied from date of receipt.,-80°C for 3-6 months after reconstitution.,2-8°C for 2-7 days after reconstitution.,Recommend to aliquot the protein into smaller quantities for optimal storage. Please minimize freeze-thaw cycles.
Expiry Date:	12 months



SDS-PAGE

Image 1. Human Complement factor I on Tris-Bis PAGE under reduced condition. The purity is greater than 95 % .



Size-exclusion chromatography-High Pressure Liquid Chromatography

Image 2. The purity of Human Complement factor I is greater than 95 % as determined by SEC-HPLC.