

Datasheet for ABIN7274346

CLEC12A Protein (AA 32-232) (His tag)**3** Images[Go to Product page](#)

Overview

Quantity:	100 µg
Target:	CLEC12A
Protein Characteristics:	AA 32-232
Origin:	Cynomolgus
Source:	HEK-293 Cells
Protein Type:	Recombinant
Purification tag / Conjugate:	This CLEC12A protein is labelled with His tag.

Product Details

Purpose:	Cynomolgus CLEC12A/MICL/CLL-1 Protein
Sequence:	His32-Ala232
Characteristics:	Recombinant Cynomolgus CLEC12A/MICL/CLL-1 Protein is expressed from HEK293 with His tag at the N-Terminus. It contains His32-Ala232.
Purity:	> 95 % as determined by Tris-Bis PAGE
Sterility:	0.22 µm filtered
Endotoxin Level:	Less than 1EU per µg by the LAL method.
Biological Activity Comment:	Anti-CLEC12A Antibody captured on CM5 Chip via Protein A can bind Cynomolgus CLEC12A, His Tag with an affinity constant of 1.28 µM as determined in SPR assay (Biacore T200). See testing image for detail.

Target Details

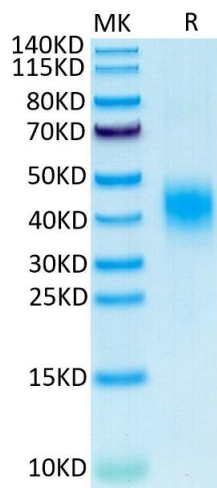
Target:	CLEC12A
Alternative Name:	CLEC12A (CLEC12A Products)
Background:	CLEC12A has recently been identified as an antigen, expressed on leukemic stem cells and leukemic blasts. Given the fact that this expression profile seems stable throughout diagnosis, treatment and relapse on leukemic blasts and leukemic stem cells, CLEC12A can be considered a highly potent and reliable marker for the detection of measurable residual disease and therefore applicable for risk stratification and prognostication in AML.
Molecular Weight:	24.6 kDa. Due to glycosylation, the protein migrates to 38-50 kDa based on Tris-Bis PAGE result.
UniProt:	A0A2K5WXQ6

Application Details

Restrictions:	For Research Use only
---------------	-----------------------

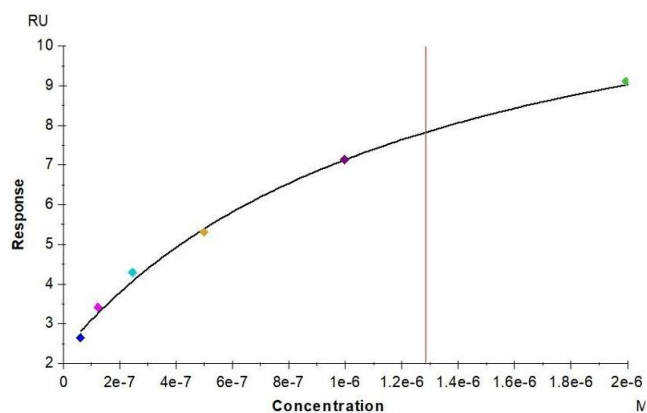
Handling

Format:	Lyophilized
Reconstitution:	Centrifuge the tube before opening. Reconstituting to a concentration more than 100 µg/mL is recommended. Dissolve the lyophilized protein in distilled water.
Buffer:	Lyophilized from 0.22µm filtered solution in PBS (pH 7.4). Normally 8 % trehalose is added as protectant before lyophilization.
Storage:	-20 °C,-80 °C
Storage Comment:	-20 to -80°C for 12 months as supplied from date of receipt., -80°C for 3-6 months after reconstitution., 2-8°C for 2-7 days after reconstitution., Recommend to aliquot the protein into smaller quantities for optimal storage. Please minimize freeze-thaw cycles.
Expiry Date:	12 months



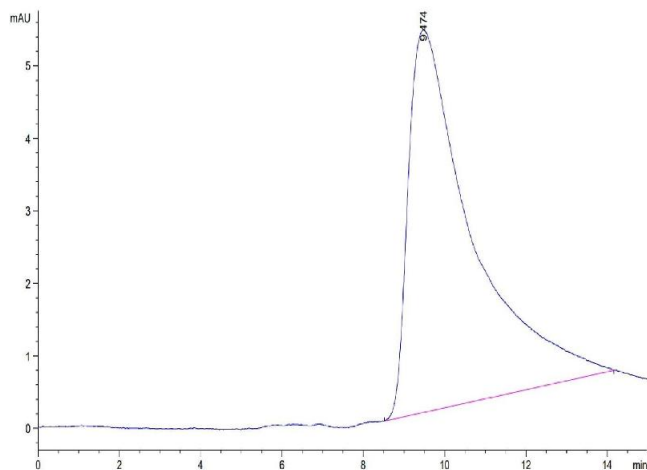
SDS-PAGE

Image 1. Cynomolgus CLEC12A on Tris-Bis PAGE under reduced condition. The purity is greater than 95 % .



Surface Plasmon Resonance

Image 2. Anti-CLEC12A Antibody captured on CM5 Chip via Protein A can bind Cynomolgus CLEC12A, His Tag with an affinity constant of 1.28 μ M as determined in SPR assay (Biacore T200).



Size-exclusion chromatography-High Pressure Liquid Chromatography

Image 3. The purity of Cynomolgus CLEC12A is greater than 95 % as determined by SEC-HPLC.