

Datasheet for ABIN7274348

**CLEC10A Protein (AA 61-316) (His tag)****2** Images[Go to Product page](#)

## Overview

Quantity:	100 µg
Target:	CLEC10A
Protein Characteristics:	AA 61-316
Origin:	Human
Source:	HEK-293 Cells
Protein Type:	Recombinant
Purification tag / Conjugate:	This CLEC10A protein is labelled with His tag.

## Product Details

Purpose:	Human CLEC10A Protein
Sequence:	Gln61-Ser316
Characteristics:	Recombinant Human CLEC10A Protein is expressed from HEK293 with His tag at the C-Terminus. It contains Gln61-Ser316.
Purity:	> 95 % as determined by Tris-Bis PAGE, > 95 % as determined by HPLC
Sterility:	0.22 µm filtered
Endotoxin Level:	Less than 1EU per µg by the LAL method.

## Target Details

Target:	CLEC10A
Alternative Name:	CLEC10A ( <a href="#">CLEC10A Products</a> )

## Target Details

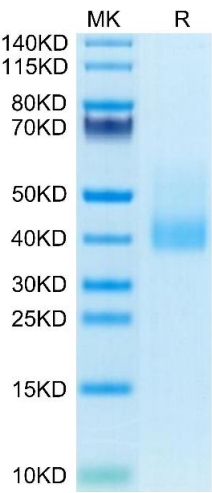
Background:	CLEC10A, (C-type lectin domain family 10, member A), as the member of C-type lectin receptors (CLRs), plays a vital role in modulating innate immunity and adaptive immunity and has shown great potential as an immunotherapy target for cancers. However, there is no functional research of CLEC10A in prognostic risk, immunotherapy or any other treatment of lung adenocarcinoma (LUAD).
Molecular Weight:	29.7 kDa. Due to glycosylation, the protein migrates to 38-45 kDa based on Tris-Bis PAGE result.

## Application Details

Restrictions:	For Research Use only
---------------	-----------------------

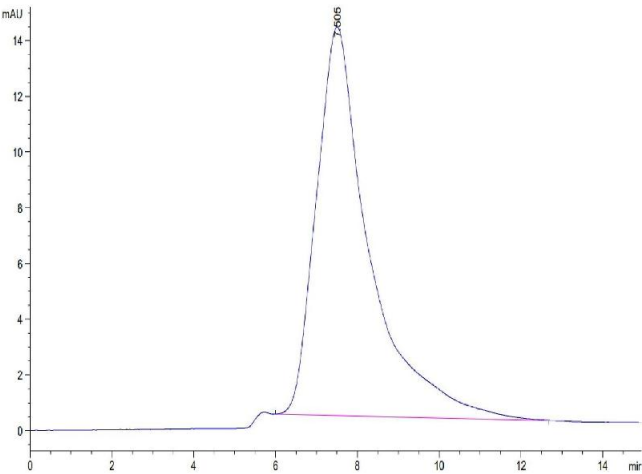
## Handling

Format:	Lyophilized
Reconstitution:	Centrifuge the tube before opening. Reconstituting to a concentration more than 100 µg/mL is recommended. Dissolve the lyophilized protein in distilled water.
Buffer:	Lyophilized from 0.22µm filtered solution in PBS ( pH 7.4). Normally 8 % trehalose is added as protectant before lyophilization.
Storage:	-20 °C,-80 °C
Storage Comment:	-20 to -80°C for 12 months as supplied from date of receipt.,-80°C for 3-6 months after reconstitution.,2-8°C for 2-7 days after reconstitution.,Recommend to aliquot the protein into smaller quantities for optimal storage. Please minimize freeze-thaw cycles.
Expiry Date:	12 months



SDS-PAGE

**Image 1.** Human CLEC10A on Tris-Bis PAGE under reduced condition. The purity is greater than 95 % .



Size-exclusion chromatography-High Pressure Liquid Chromatography

**Image 2.** The purity of Human CLEC10A is greater than 95 % as determined by SEC-HPLC.