

Datasheet for ABIN7274349
CLEC12A Protein (His tag)[Go to Product page](#)

3 Images

Overview

Quantity:	100 µg
Target:	CLEC12A
Origin:	Human
Source:	HEK-293 Cells
Protein Type:	Recombinant
Purification tag / Conjugate:	This CLEC12A protein is labelled with His tag.

Product Details

Sequence:	His65-Ala265
Purity:	> 95% as determined by Tris-Bis PAGE, > 95% as determined by HPLC
Sterility:	0.22 µm filtered
Endotoxin Level:	Less than 1EU per µg by the LAL method.
Biological Activity Comment:	Immobilized Human CLEC12A at 0.2µg (100µl/Well) on the plate. Dose response curve for Anti-CLEC12A Antibody, hFc Tag with the EC50 of 7.9ng/ml determined by ELISA. See testing image for detail.

Target Details

Target:	CLEC12A
Alternative Name:	CLEC12A (CLEC12A Products)
Background:	MICL, CLL-1, CLEC12A, CLL1, DCAL2, DCAL-2, CD371, CD303, CLECSF11, CLECSF7, DLEC, HECL, PRO34150, DCAL-2, CLEC12A has recently been identified as an antigen, expressed on

Target Details

leukemic stem cells and leukemic blasts. Given the fact that this expression profile seems stable throughout diagnosis, treatment and relapse on leukemic blasts and leukemic stem cells, CLEC12A can be considered a highly potent and reliable marker for the detection of measurable residual disease and therefore applicable for risk stratification and prognostication in AML.

Molecular Weight: 24.6 kDa. Due to glycosylation, the protein migrates to 38-55 kDa based on Tris-Bis PAGE result.

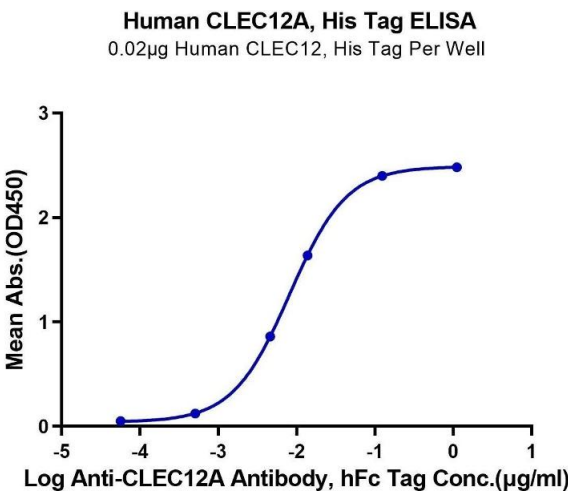
Application Details

Restrictions: For Research Use only

Handling

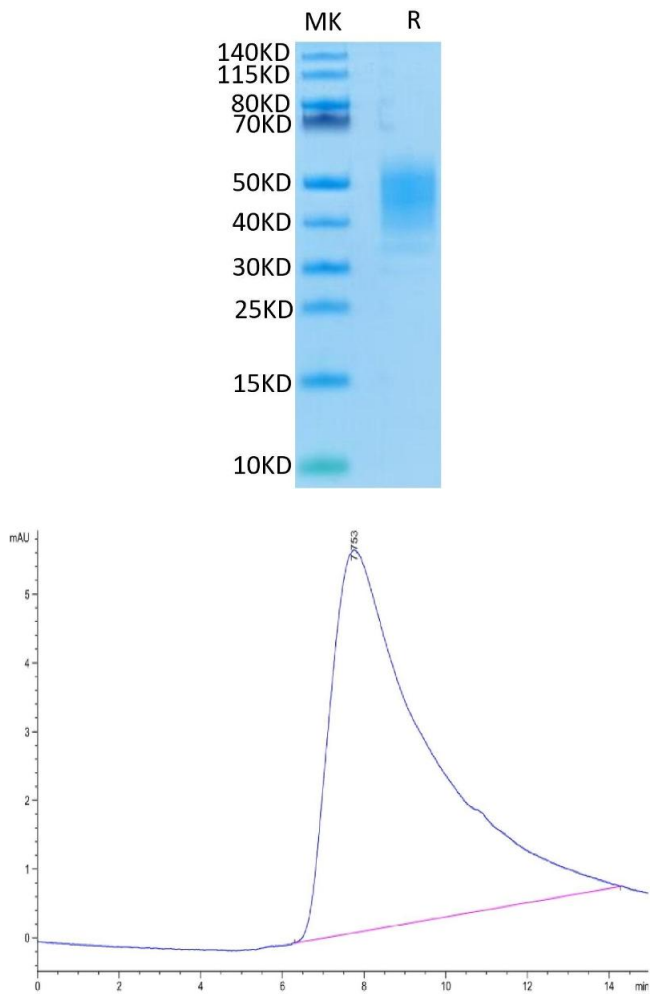
Format:	Lyophilized
Reconstitution:	Centrifuge tubes before opening. Reconstituting to a concentration more than 100 µg/mL is recommended (usually we use 1 mg/mL solution for lyophilization). Dissolve the lyophilized protein in distilled water.
Buffer:	Lyophilized from 0.22µm filtered solution in PBS (pH 7.4). Normally 5 % trehalose is added as protectant before lyophilization.
Storage:	4 °C,-80 °C
Storage Comment:	Reconstituted protein stable at -80°C for 12 months, 4°C for 1 week. Use a manual defrost freezer and avoid repeated freeze-thaw cycles.
Expiry Date:	12 months

Images



ELISA

Image 1. Immobilized Human CLEC12A at 0.2 µg (100 µ L/Well) on the plate. Dose response curve for Anti-CLEC12A Antibody, hFc Tag with the EC50 of 7.9 ng/mL determined by ELISA.



SDS-PAGE

Image 2. Human CLEC12A on Tris-Bis PAGE under reduced condition. The purity is greater than 95 % .

Size-exclusion chromatography-High Pressure Liquid Chromatography

Image 3. The purity of Human CLEC12A/MICL/CLL-1 is greater than 95 % as determined by SEC-HPLC.