

Datasheet for ABIN7274350

**CLEC12A Protein (AA 65-265) (FITC,His tag)**[Go to Product page](#)**1** Image

## Overview

Quantity:	100 µg
Target:	CLEC12A
Protein Characteristics:	AA 65-265
Origin:	Human
Source:	HEK-293 Cells
Protein Type:	Recombinant
Purification tag / Conjugate:	This CLEC12A protein is labelled with FITC,His tag.

## Product Details

Purpose:	FITC-Labeled Human CLEC12A/MICL/CLL-1 Protein
Sequence:	His65-Ala265
Characteristics:	Recombinant FITC-Labeled Human CLEC12A/MICL/CLL-1 Protein is expressed from HEK293 with His tag at the N-Terminus.It contains His65-Ala265.
Purity:	> 95 % as determined by Tris-Bis PAGE,> 95 % as determined by HPLC
Sterility:	0.22 µm filtered
Endotoxin Level:	Less than 1EU per µg by the LAL method.

## Target Details

Target:	CLEC12A
Alternative Name:	CLEC12A ( <a href="#">CLEC12A Products</a> )

## Target Details

**Background:** CLEC12A has recently been identified as an antigen, expressed on leukemic stem cells and leukemic blasts. Given the fact that this expression profile seems stable throughout diagnosis, treatment and relapse on leukemic blasts and leukemic stem cells, CLEC12A can be considered a highly potent and reliable marker for the detection of measurable residual disease and therefore applicable for risk stratification and prognostication in AML.

**Molecular Weight:** 24.6 kDa. Due to glycosylation, the protein migrates to 35-55 kDa based on Tris-Bis PAGE result.

## Application Details

**Restrictions:** For Research Use only

## Handling

**Format:** Liquid

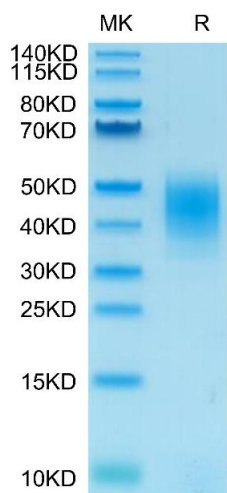
**Buffer:** Supplied as 0.22µm filtered solution in PBS ( pH 7.4).

**Storage:** -80 °C

**Storage Comment:** Valid for 12 months from date of receipt when stored at -80°C.,Recommend to aliquot the protein into smaller quantities for optimal storage. Please minimize freeze-thaw cycles.

**Expiry Date:** 12 months

## Images



### SDS-PAGE

**Image 1.** FITC-Labeled Human CLEC12A on Tris-Bis PAGE under reduced condition. The purity is greater than 95 % .